



# DRYDEN

---

## GOLD CORP

TSXV: **DRY** | OTCQX: **DRYGF** | FSE: **X7W**  
[drydengold.com](http://drydengold.com)

APRIL 2026

# Acknowledgements & Forward-Looking Statements

***Dryden Gold Corp acknowledges all Indigenous Peoples and that it is operating on the traditional homelands of the Wabigoon Lake Ojibway Nation and Eagle Lake First Nation.***

*Certain statements contained herein constitute “forward-looking statements” within the meaning of the applicable Canadian securities legislation. These forward-looking statements are based on current expectations, estimates and projections about the Canadian mining and mineral exploration industry based on management’s beliefs and certain assumptions made by management. Readers are cautioned that such forward-looking statements are not guarantees of future performance and are subject to risks, uncertainties and assumptions that are difficult to predict, and the actual results and performance of Dryden Gold Corp. (the “Company”) may differ materially from the results implied by such statements. Readers are cautioned not to place undue reliance on any forward-looking statements. Unless otherwise required by law, the Company also disclaims any obligation to update its view of any such risks or uncertainties or to announce publicly the result of any revisions to the forward-looking statements made here.*

*This document contains proprietary information that is the property of Dryden Gold Corp. Neither this document, nor the proprietary information contained herein, shall be published, reproduced, copied, disclosed or used for any other purpose, other than the review and consideration of this document.*

*This presentation is not an offer, nor the solicitation of an offer to buy any securities. Such an offer, if made, will be made only through a prospectus or other such document issued in accordance with applicable securities laws, and other applicable laws, rules and regulations., Or pursuant to the applicable exemption from the requirement to deliver a prospectus, in accordance with applicable laws.*

*Historical statements contained in this document regarding past activities should not be taken as a representation that such trends or activities will continue in the future. In particular, historical results should not be taken as a representation that such trends will be replicated in the future. No statement in this document is intended to be nor may be construed as a profit forecast.*

*An investment in the Company is speculative and involves substantial risk and is only suitable for investors that understand the potential consequences and are able to bear the risk of losing their entire investment. Investors should consult with their own legal, tax and financial advisors with respect to all such risks before making an investment.*

*The Company is in the early stage of development and has a limited operational history, making it difficult to accurately predict business operations. The Company has limited resources and may run out of capital prior to becoming profitable. The Company may fail and investors may lose their entire investment.*

*The technical disclosure in this presentation has been approved by Maura J. Kolb, M.Sc., P.Geo. a Qualified Person as defined by National Instrument 43-101 of the Canadian Securities Administrators.*



# Key Value Drivers



## Experienced Management

**History of success** in building junior mining companies and navigating M&A to create shareholder value

**Technical team** has extensive regional experience leading the exploration team at the Red Lake Mine



## Investment Upside

**High-grade gold** across the entire Dryden District

**Limited historic drilling** – 30,000 meters

**System has never** been drilled tested at depth

**Regional Greenfield targets** at Hyndman & Sherridon

**Strategic investment** from Centerra Gold



## Favorable Mining Jurisdiction

**Excellent infrastructure**, including grid power

**Major highway access** and logging roads

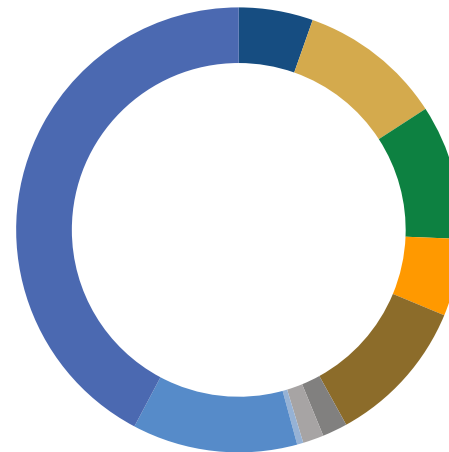
**Year-round drilling**

**Significant tax benefits** and government grants

**Collaborative relationships** with First Nations communities

Trey Wasser	Maura Kolb	Scott Kelly	Anna Hicken	Jason Jessup	Christina McCarthy	Darin Wagner	Stephen Kenwood	Gary Baschuk	Ben Frieman
CEO Director	President	CFO Director	VPX	Independent Director	Independent Director	Advisor	Advisor	Advisor	Advisor

## MAJOR SHAREHOLDERS



- Management & Insiders 5.39%
- Alamos Gold (NYSE-AGI) 10.46%
- Centerra Gold Inc 9.80%
- EuroPac Gold Fund 5.62%
- Delbrook Capital 10.71%
- Eric Sprott 1.82%
- Rob McEwen 1.52%
- Robert Quartermain 0.45%
- Other Institutions 12.00%
- Public Float 42.23%

## SHARE STRUCTURE

as of April 22, 2026

<b>Trading Symbols</b>	TSXV: DRY OTCQX: DRYGF FSE: X7W
Current Issued and Outstanding	219,877,849
Warrants Outstanding	11,510,182
ESOP Options Outstanding	12,300,000
Fully Diluted	243,688,031
Cash Balance	\$ 7,900,000

## ANALYST COVERAGE

<b>CLARUS SECURITIES</b> Varun Arora	<b>SCP CAPITAL</b> Brandon Gaspar	<b>COULOIR CAPITAL</b> Ron Wortel	<b>KPG WEALTH</b> Pranta Sen Gupta	<b>Independent Mining Analyst</b> Eric Lemieux, M.Sc. P. Geo.
---	--------------------------------------	--------------------------------------	---------------------------------------	--

## NEWSLETTER WRITER COVERAGE

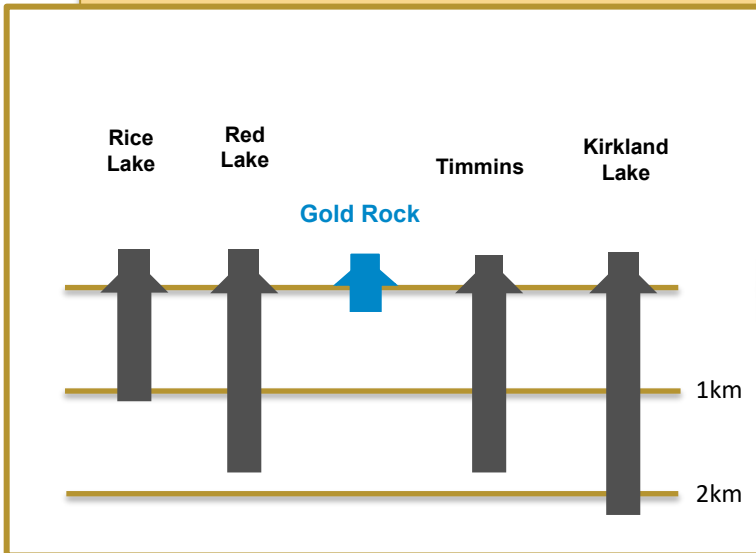
<b>JEFF CLARK</b> <a href="#">The Gold Advisor</a>	<b>BRIEN LUNDIN</b> <a href="#">The Gold Newsletter</a>	<b>CHEN LIN</b> <a href="#">Chen's Stock Picks</a>
---	--	---

**DRYDEN**

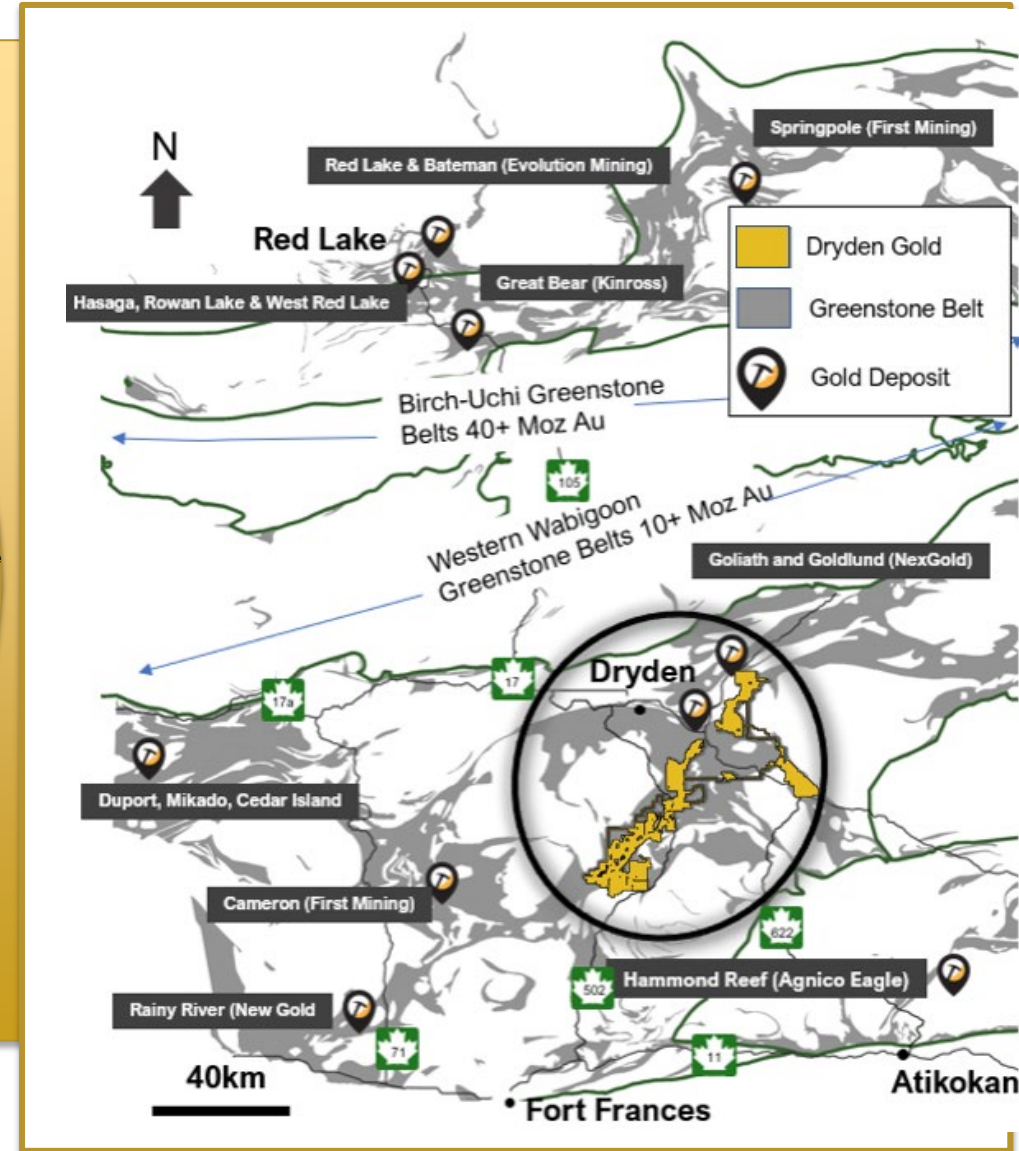
GOLD CORP

# Prolific Gold Region | An Under Explored District

## Archean Lode Gold Mines Camps Central Canada



Limited exploration & historic mining district-wide **at only shallow depths**



**DRYDEN**

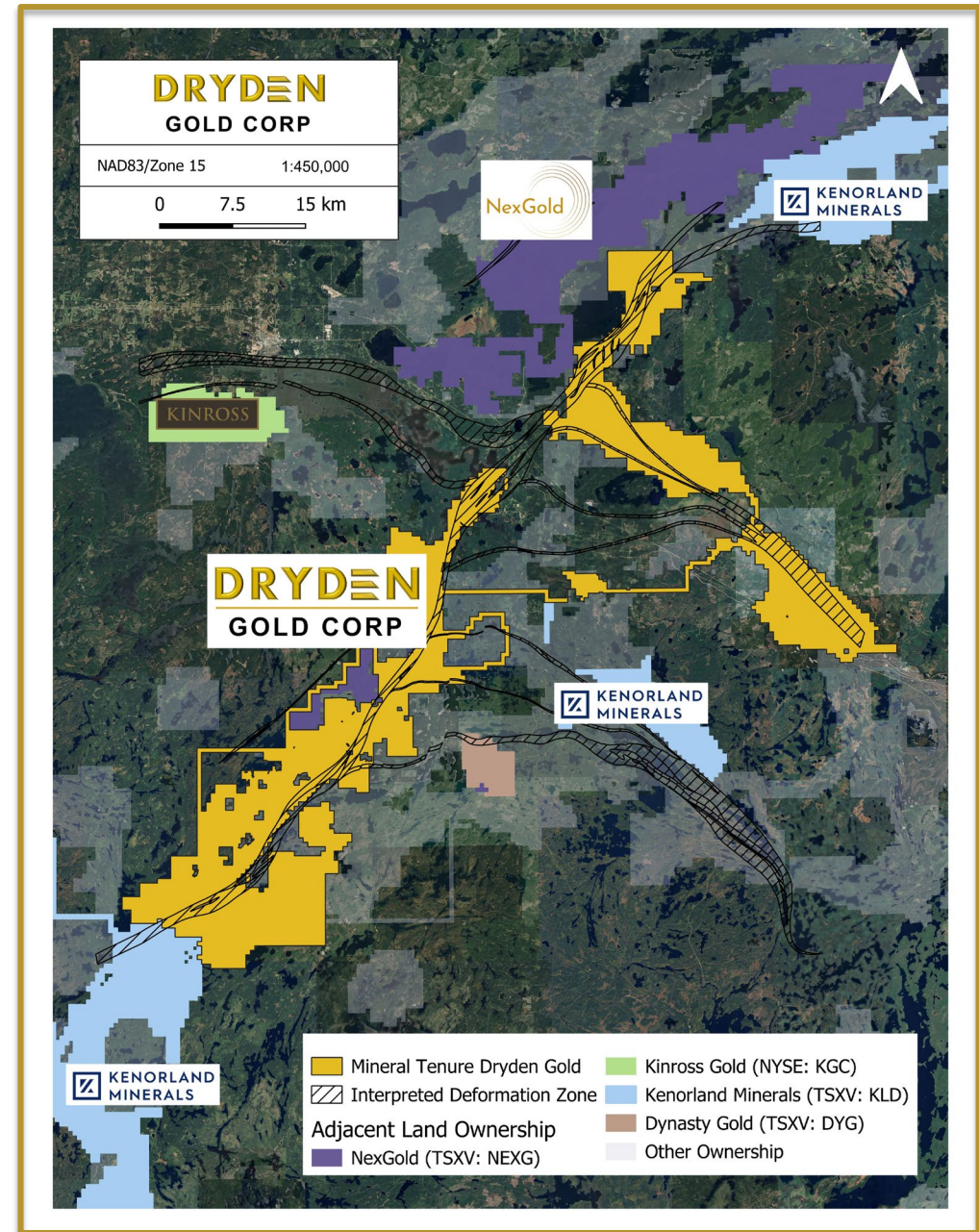
GOLD CORP

## Strategic Land Package

- ▲ Over 803 km<sup>2</sup> (80,339 hectares) consolidated & 100% owned by Dryden Gold Corp.
- ▲ Excellent infrastructure – Roads, power & labor
- ▲ 50 km strike covering regional gold bearing MDdz structure (Manitou-Dinorwic deformation zone)
- ▲ Two additional cross-cutting regional gold-bearing fault structures

## Strategic Exploration Method

- ▲ All oriented drill core to enhance structural interpretation
- ▲ Fully assayed drill core to define stacked structures in different host rocks
- ▲ Smaller drill passes, integrating new data for each phase insuring geological & structural controls go into targeting
- ▲ Year-round drilling at industry low cost of \$250/m (all in)



# District Scale High-Grade Gold | Fully Funded for 2026

## Gold Rock Camp Drill Highlights

- ▲ 301.67 g/t gold over 3.90 meters including 1,930.00 g/t over 0.60 meters
- ▲ 55.34 g/t gold over 3.50 meters
- ▲ 3,497.0 g/t gold over 8.45 meters \*historic drill hole\* including 53,700 g/t gold over 0.55 meters

## Hyndman Field Samples

- ▲ 34.80 g/t gold grab sample 2024
- ▲ 13.00 g/t gold grab sample 2023

## Hyndman Channel Samples

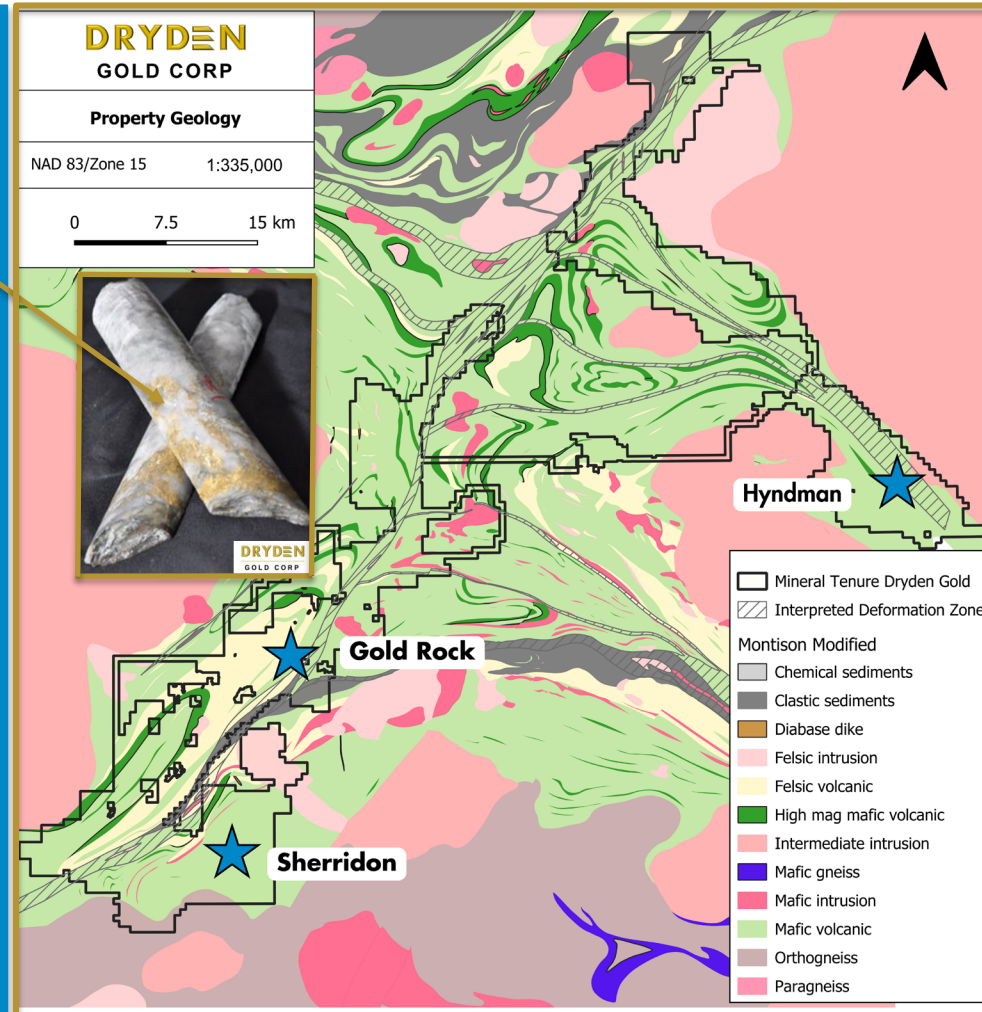
- ▲ 23.32 g/t Au over 2.80 m  
incl. 24.79 g/t Au over 1.50 m  
incl. 36.90 g/t Au over 0.70 m

## Sherridon Field Samples

- ▲ 617.00 g/t gold grab sample (historic)
- ▲ 184.50 g/t gold grab sample (historic)

## Sherridon Drill Highlights

- ▲ 1.28 g/t gold over 19.00 meters including 36.40 g/t over 0.50 meters



## Two-Prong Exploration Plan

### Gold Rock Camp - Our Flagship

- ▲ Fully Defining the Structures and Controls of High-Grade Gold
- ▲ Deeper Drilling
- ▲ Proving the Periodicity
- ▲ Developing Multiple Target Areas in the Gold Rock Camp (20 km)

### Regional Discoveries

#### Hyndman

- ▲ DRY's First Regional Discovery
- ▲ Potential 4km Strike
- ▲ Channel Samples Generate Drill Test

#### Sherridon

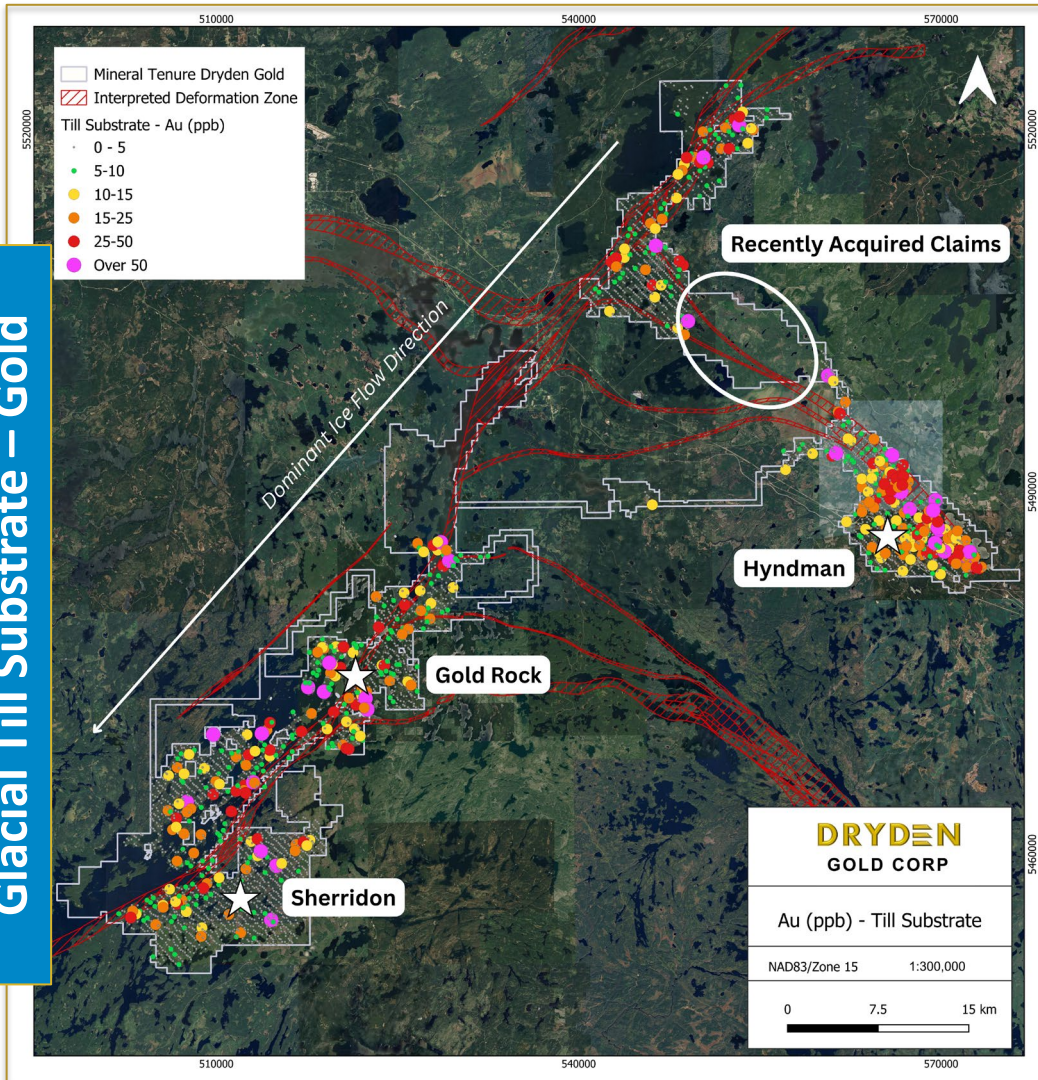
- ▲ First Pass Drilling & Re-Logging
- ▲ Defining Broad Mineralized Zones
- ▲ New Structural Interpretation
- ▲ Planning Follow-up Drilling

**DRYDEN**

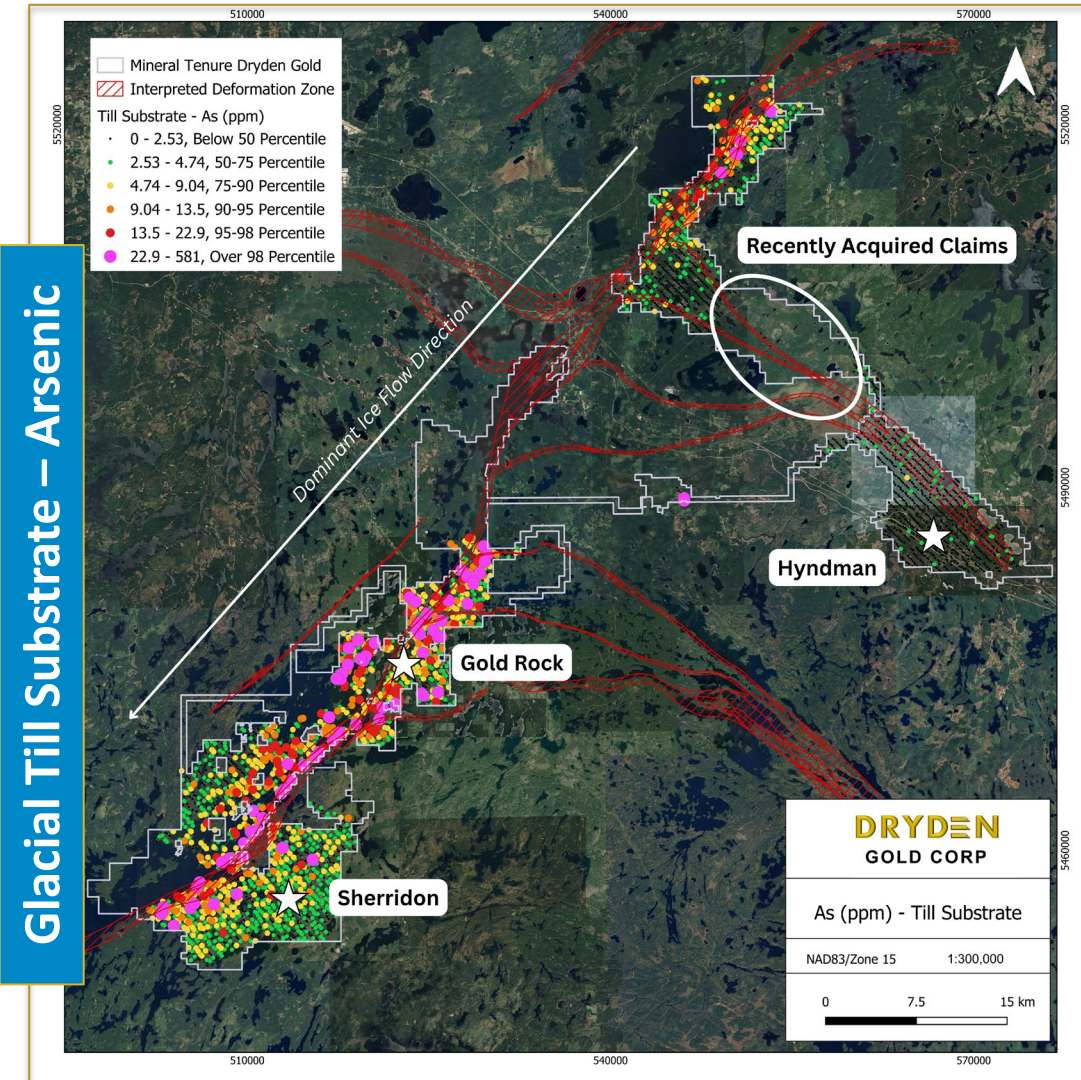
GOLD CORP

# District Scale | Significant Till Substrate Anomalies

Glacial Till Substrate – Gold



Glacial Till Substrate – Arsenic



Clustered anomalous gold values along the NE-SW (D2) and are visually occurring clustered around where the (D2) intersects the older E-W D1.

Arsenic anomalies are concentrated along the NE - SW D2 structure, supporting an orogenic gold interpretation.

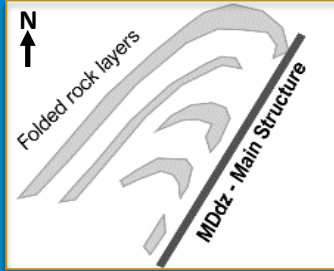
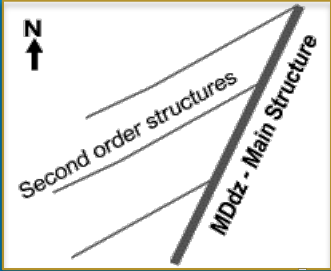
Hyndman lacks this arsenic signature, suggesting it may represent a different style of mineralization.

*Samples were collected targeting 'C' and 'B' horizon soils (till substrate).*

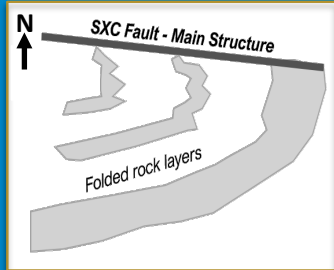
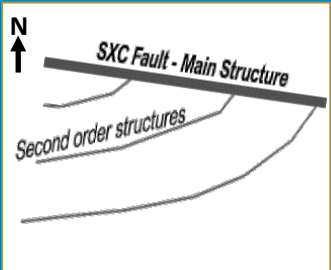
# Gold Rock Camp

## Similar Geological Setting to Red Lake

### Dryden Gold Corp. Gold Rock Area Geology



### Red Lake Mine Geology



Similar geological setting, rock types with regional folding and structural geometry

Favorable geological gold traps for high-grade gold

Various styles of gold mineralization  
*Quartz veins w/ free gold, shears hosting gold, disseminated sulfides*

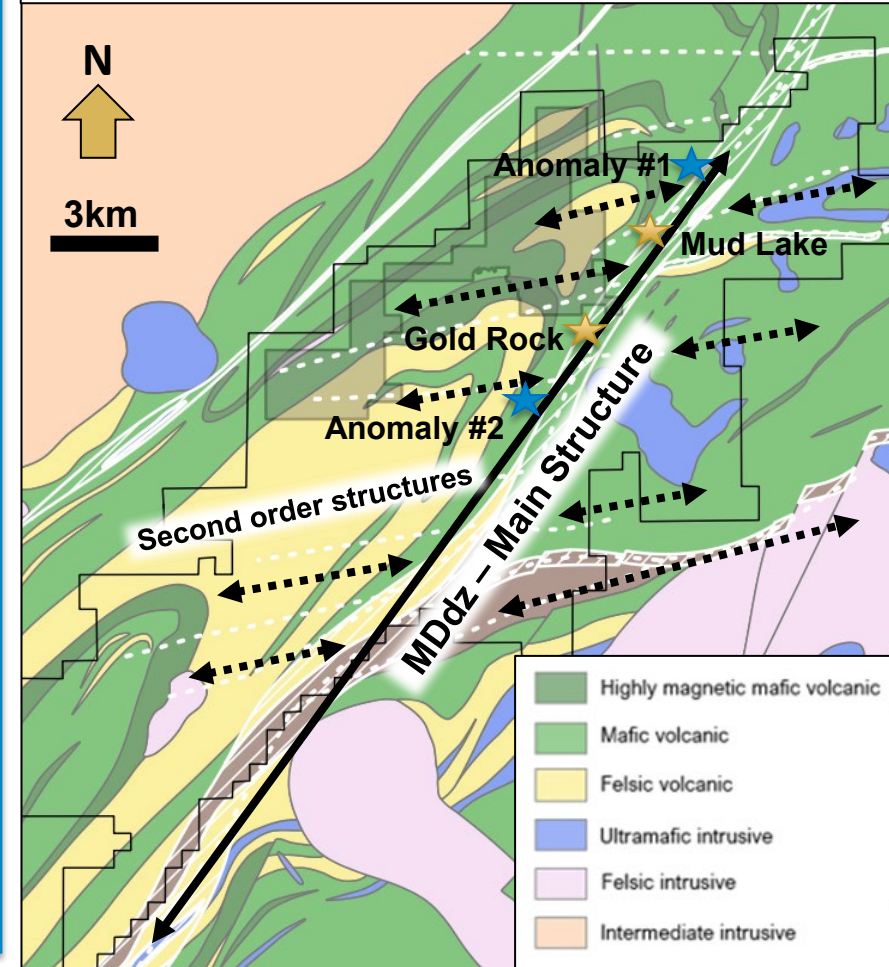
Very similar footprint at Red Lake and Gold Rock Camp

Stacked zones of mineralization in different structural planes at Red Lake & Gold Rock

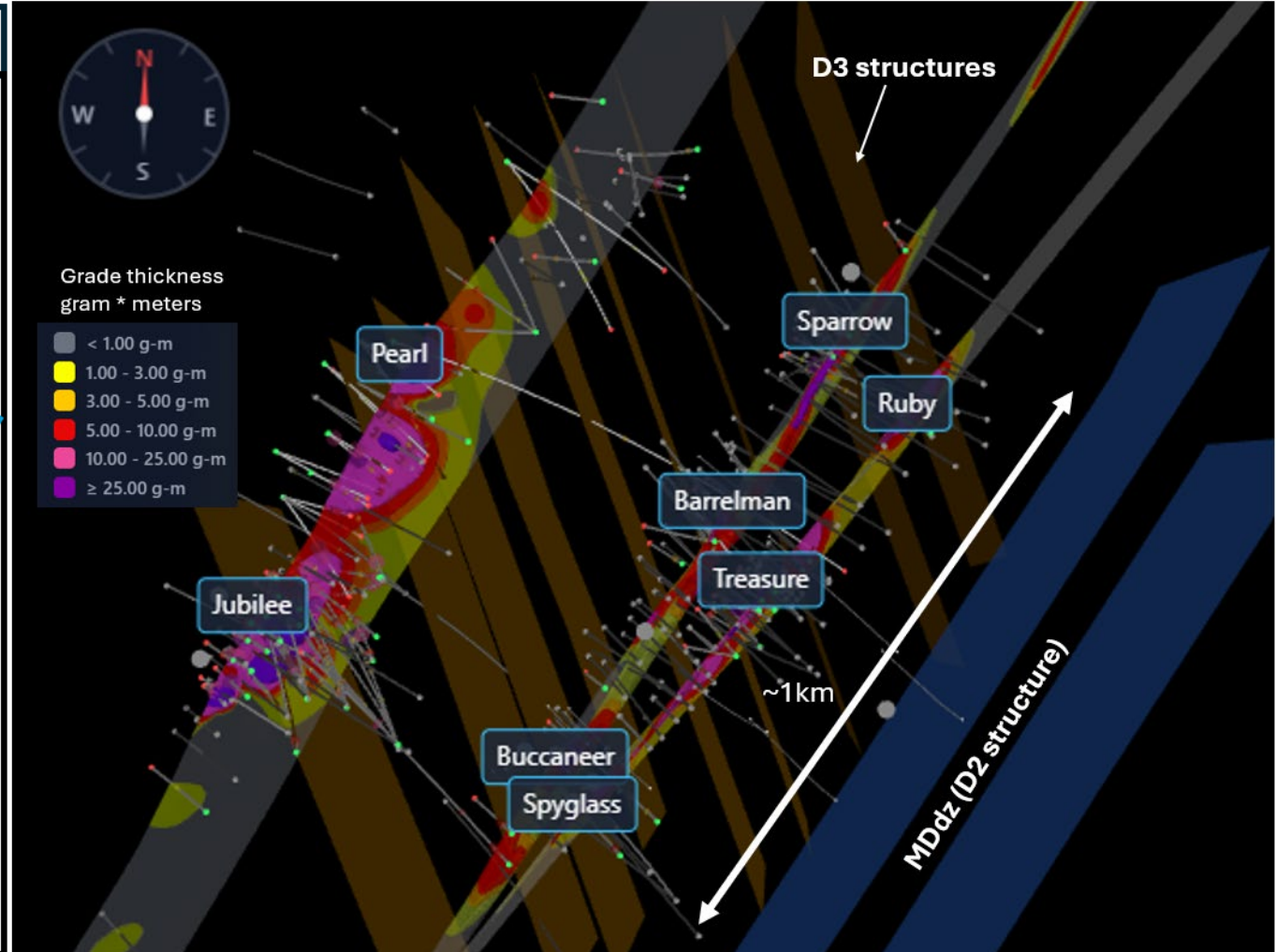
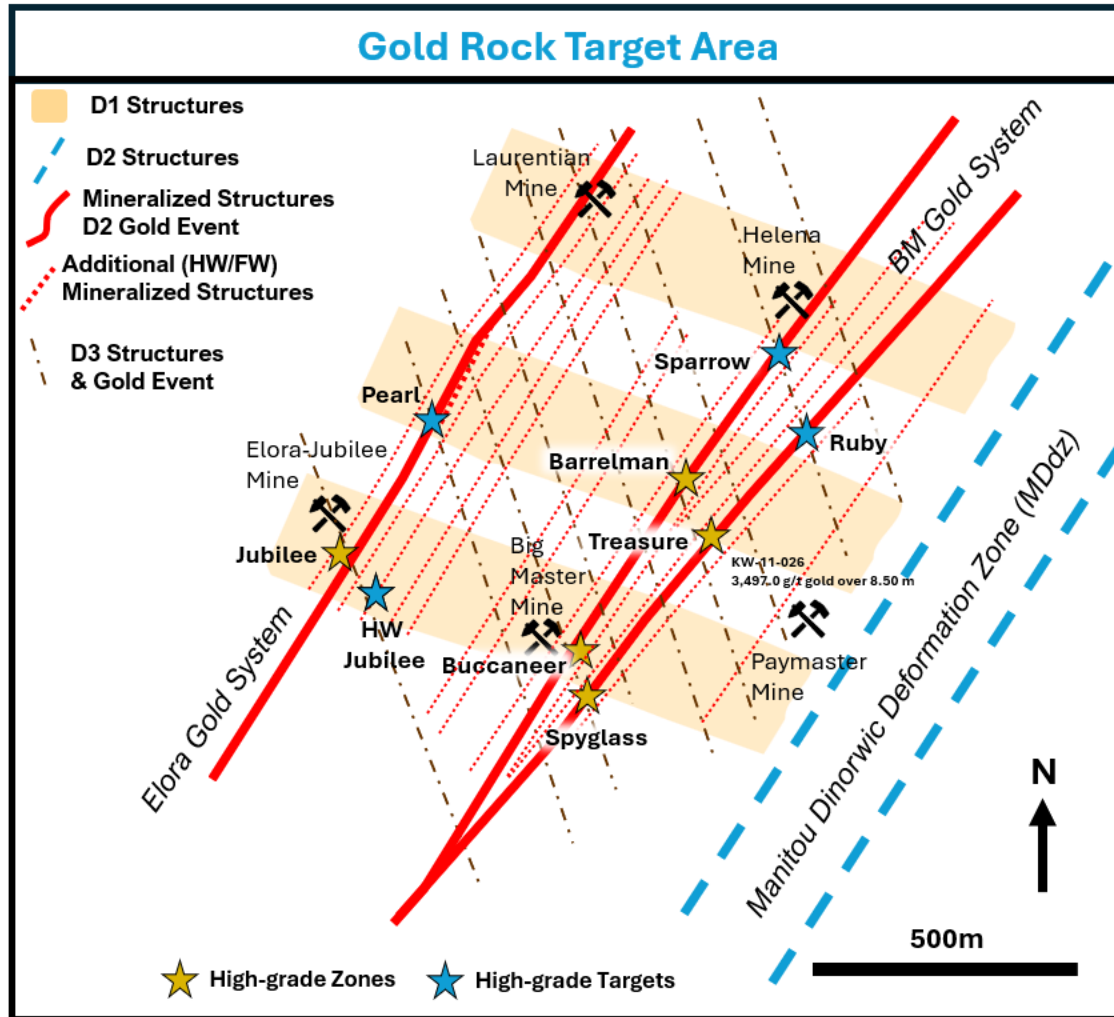
Periodicity to these mineralized areas

Red Lake discovered through mineralization outcropping on surface like Gold Rock Camp

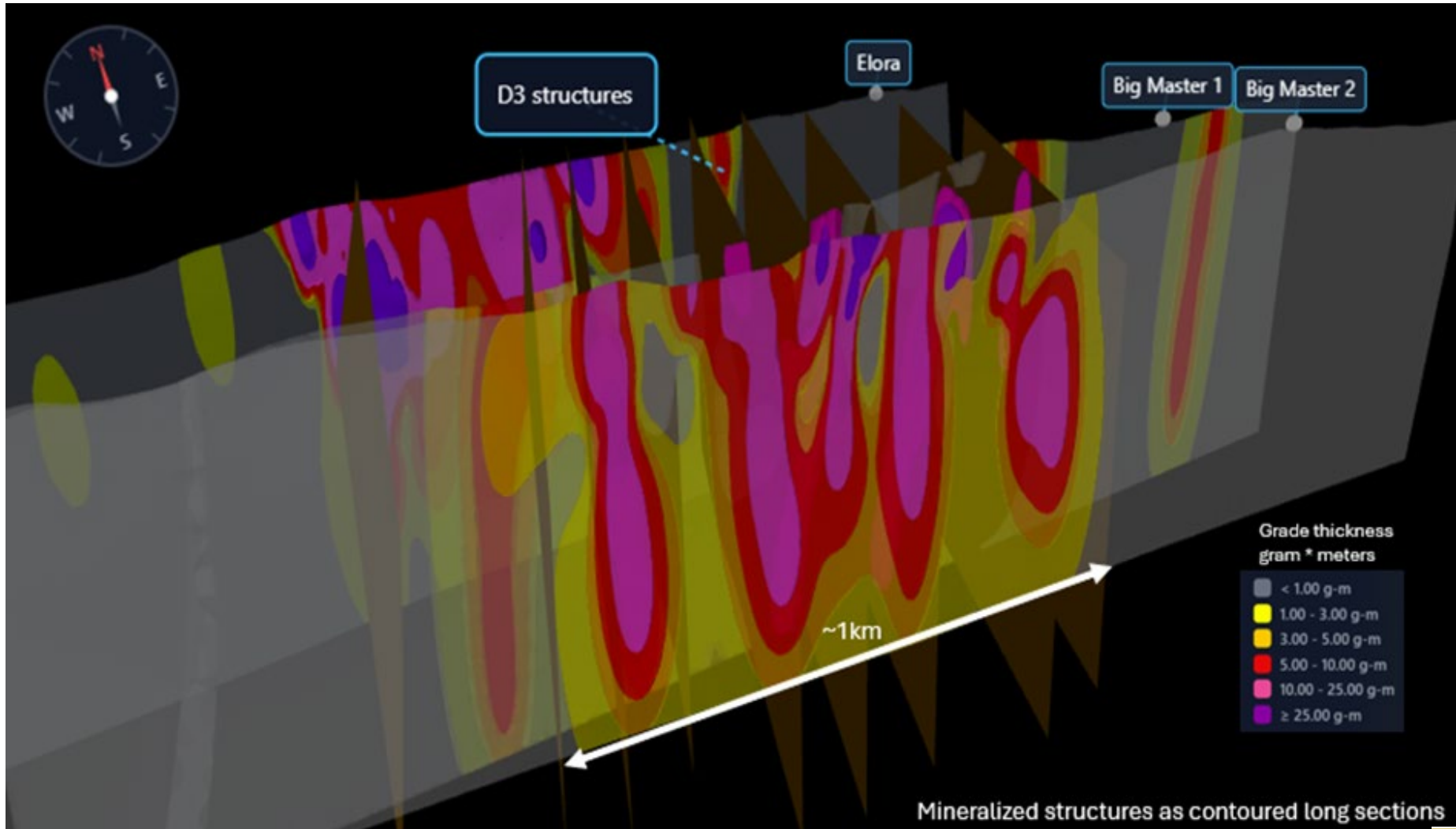
### Gold Rock Camp Geology



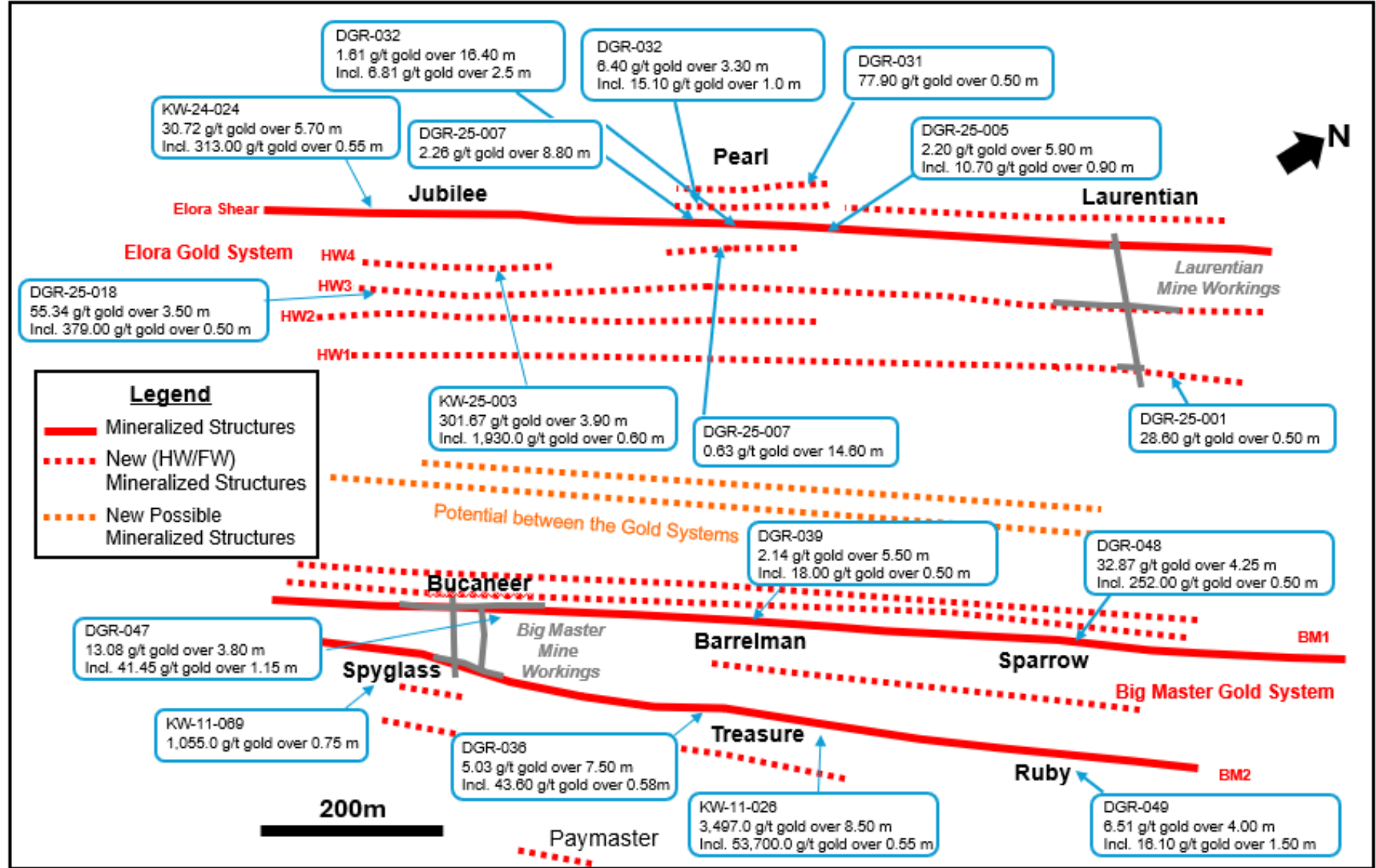
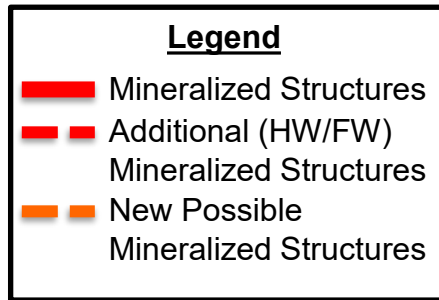
# Gold Rock Target Area | Structurally Controlled Mineralization



# Gold Rock Target Area | Structurally Controlled Mineralization



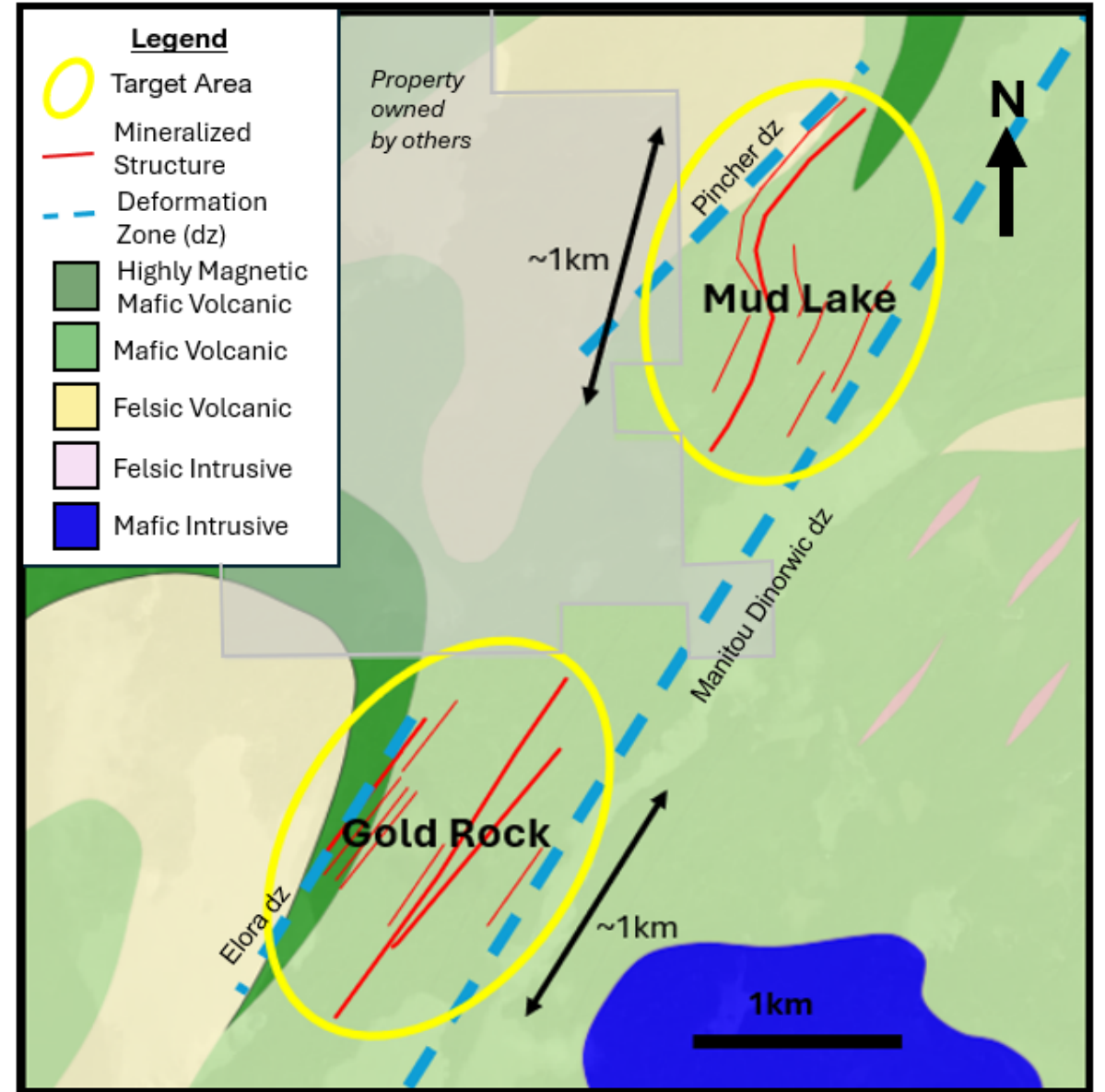
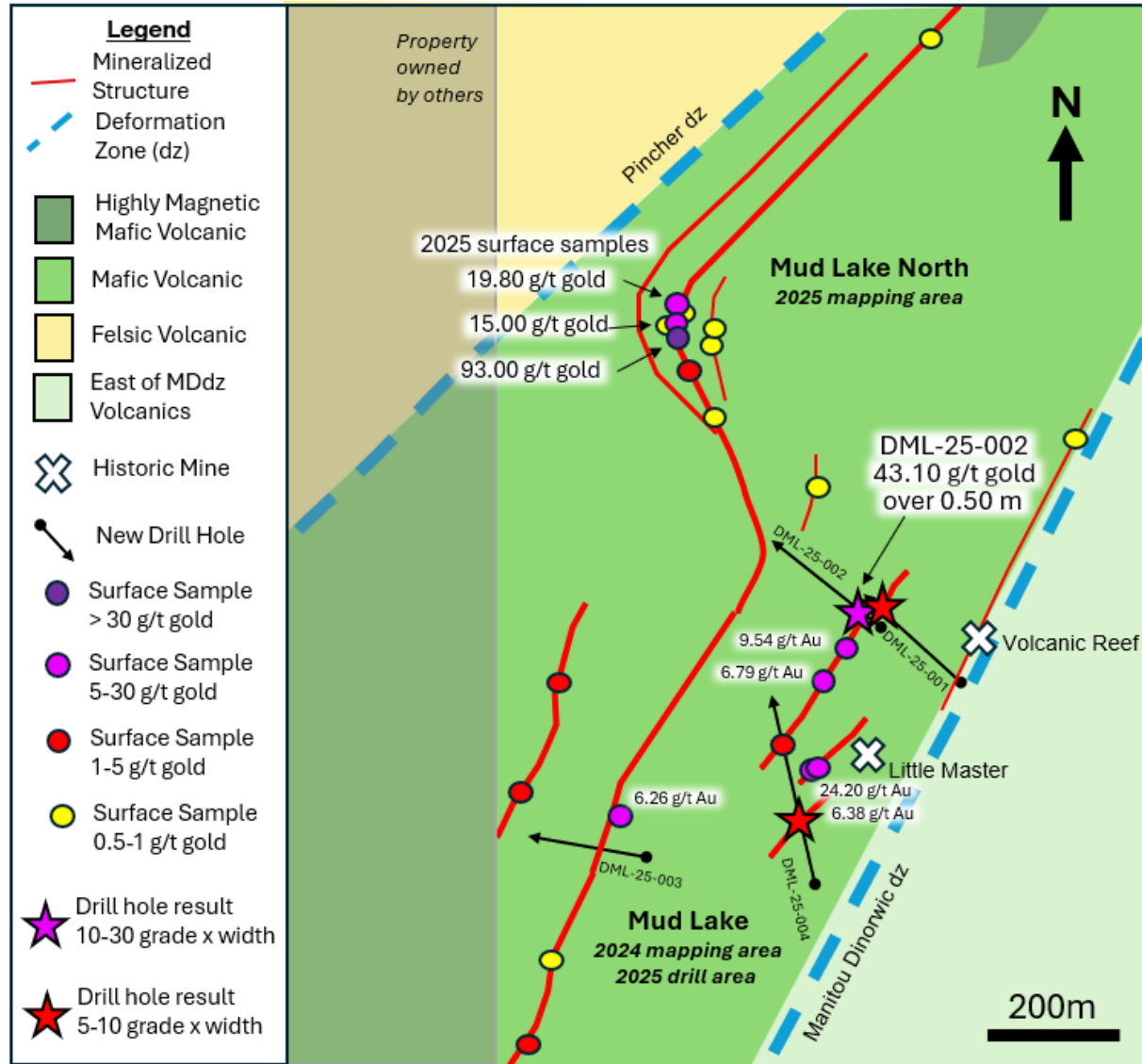
# Gold Rock Target Area | Multiple Mineralized Structures



Scan for explanation videos:



# Gold Rock Camp | Deposit Scale Periodicity | Mud Lake

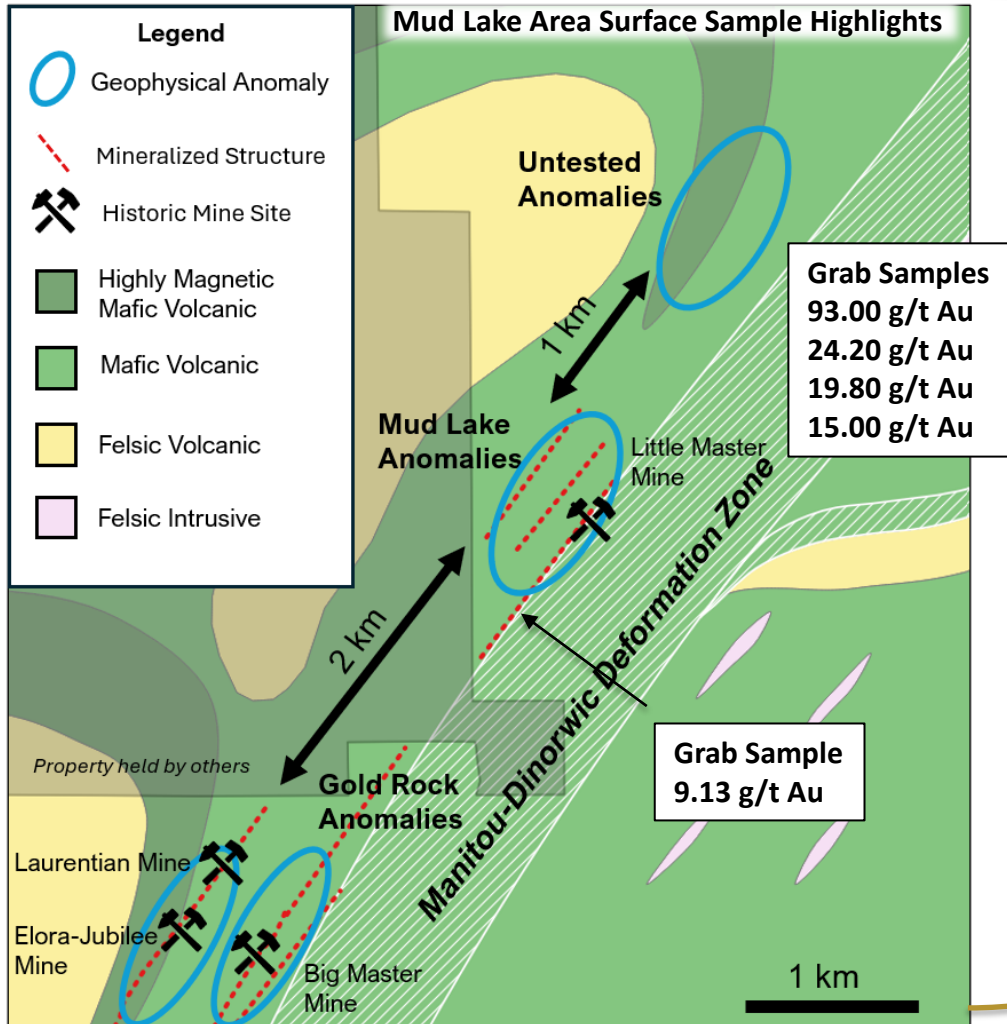


**DRYDEN**

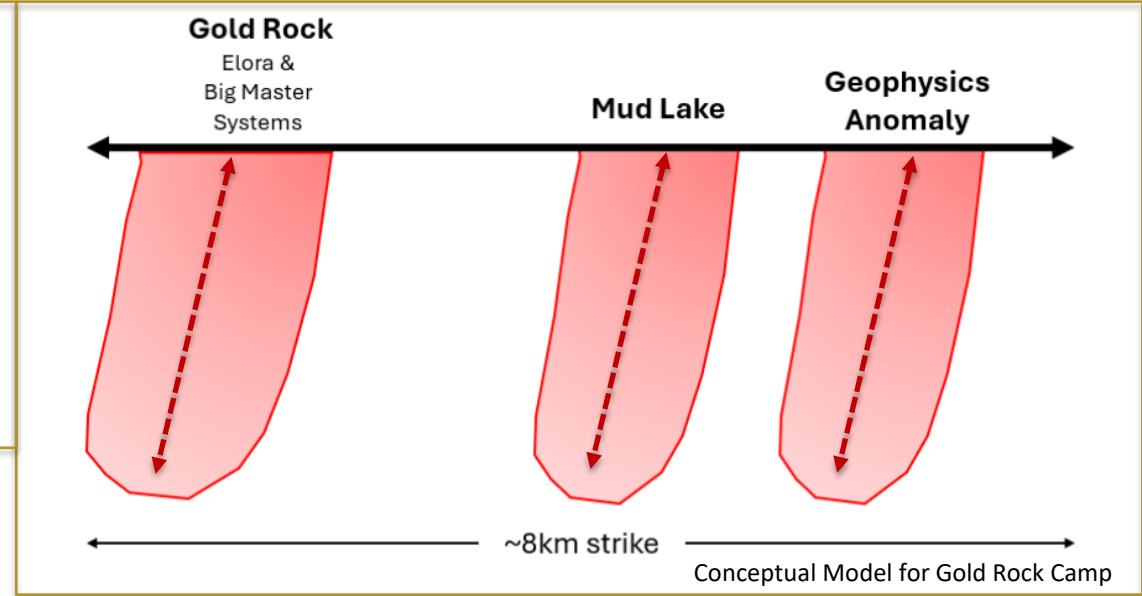
**GOLD CORP**

# Gold Rock Camp | Periodicity | Another Comparison to Red Lake

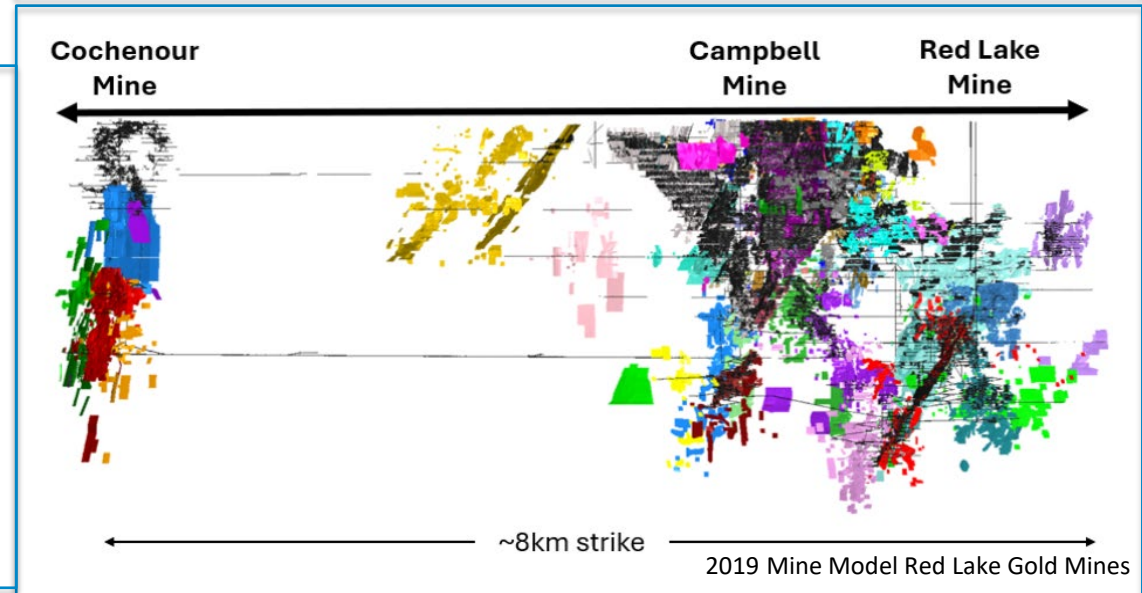
**Gold Rock Trend Map** - Gold Rock, Mud Lake Area and Untested



**Long Section**  
from  
Gold Rock  
to  
Mud Lake  
to  
Untested  
Geophysics  
Anomalies



**Long Section**  
from  
Red Lake  
Mine  
to  
Campbell  
Mine  
To  
Cochenour  
Mine



**DRYDEN**

**GOLD CORP**

# What's next for 2026?

Test new structural intersection targets at Gold Rock

Planning and permitting new exploration target

## Gold Rock Camp

- North Mud Lake
- Walmsley Deformation zone

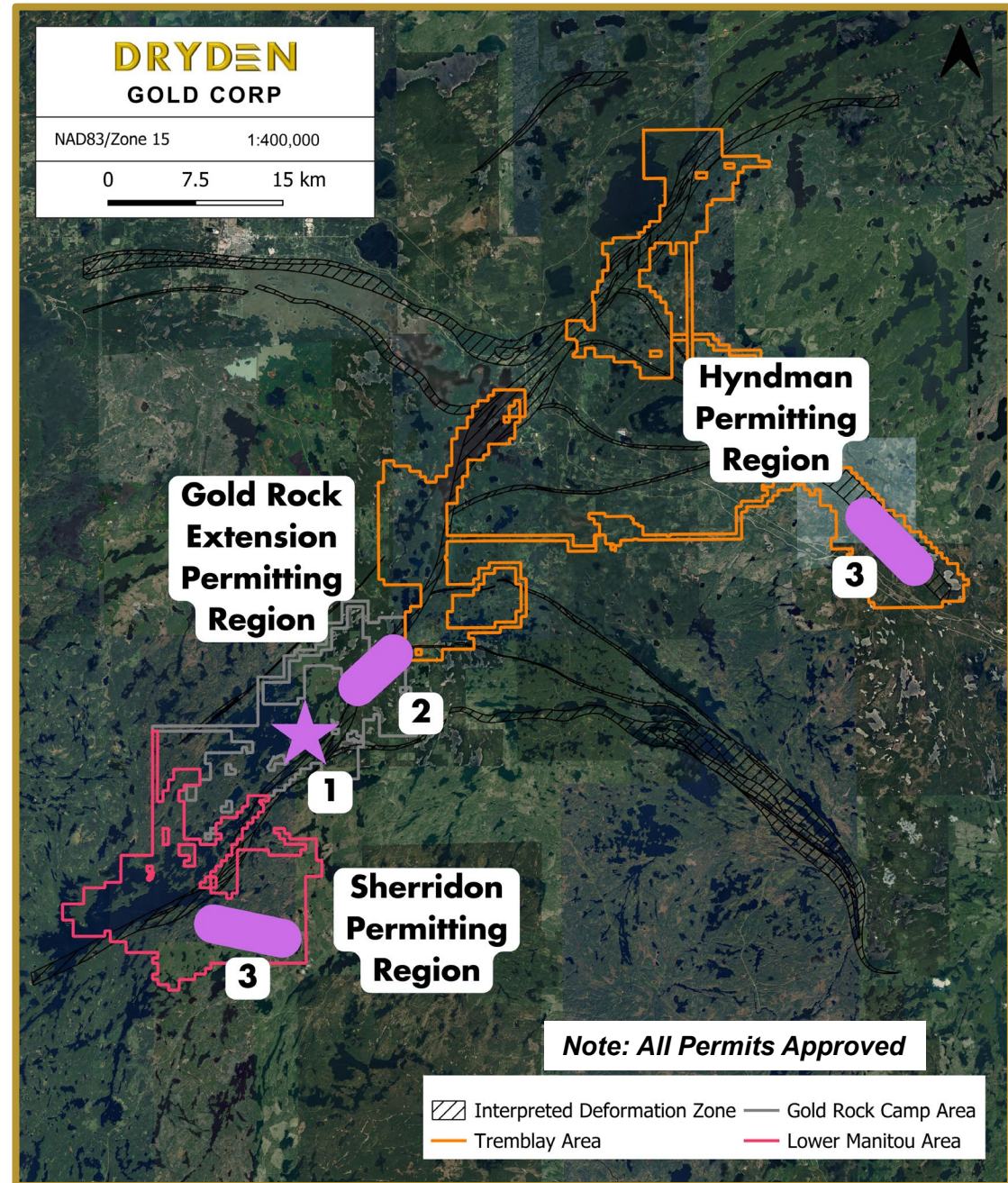
## Regional Targets

- Expanded Area at Hyndman
- Expanded Area at Sherridon

Till Substrate sampling program on new ground

Mapping and prospecting priority target areas

Follow up at Hyndman – granodiorite hosted target

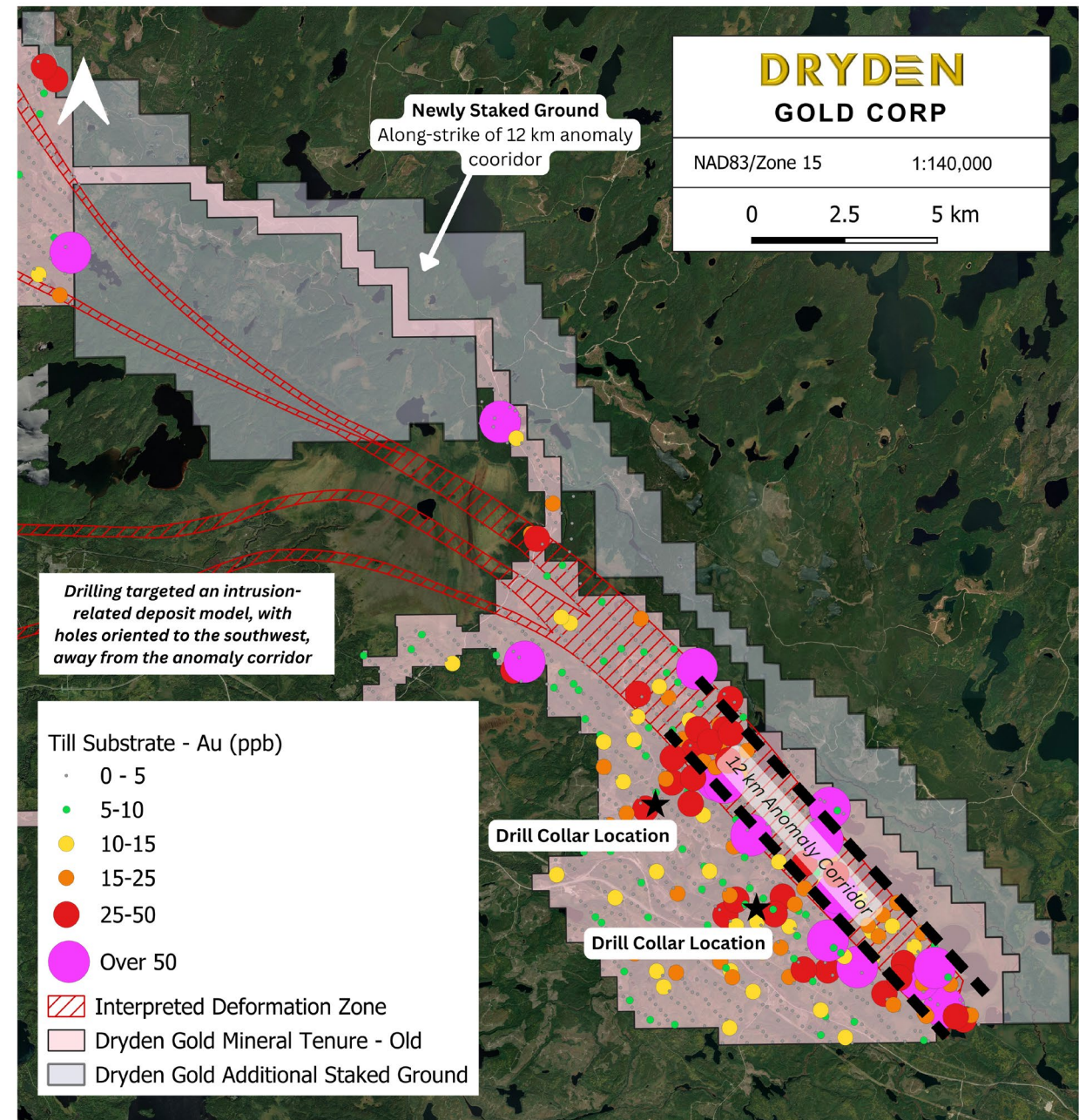


**DRYDEN**

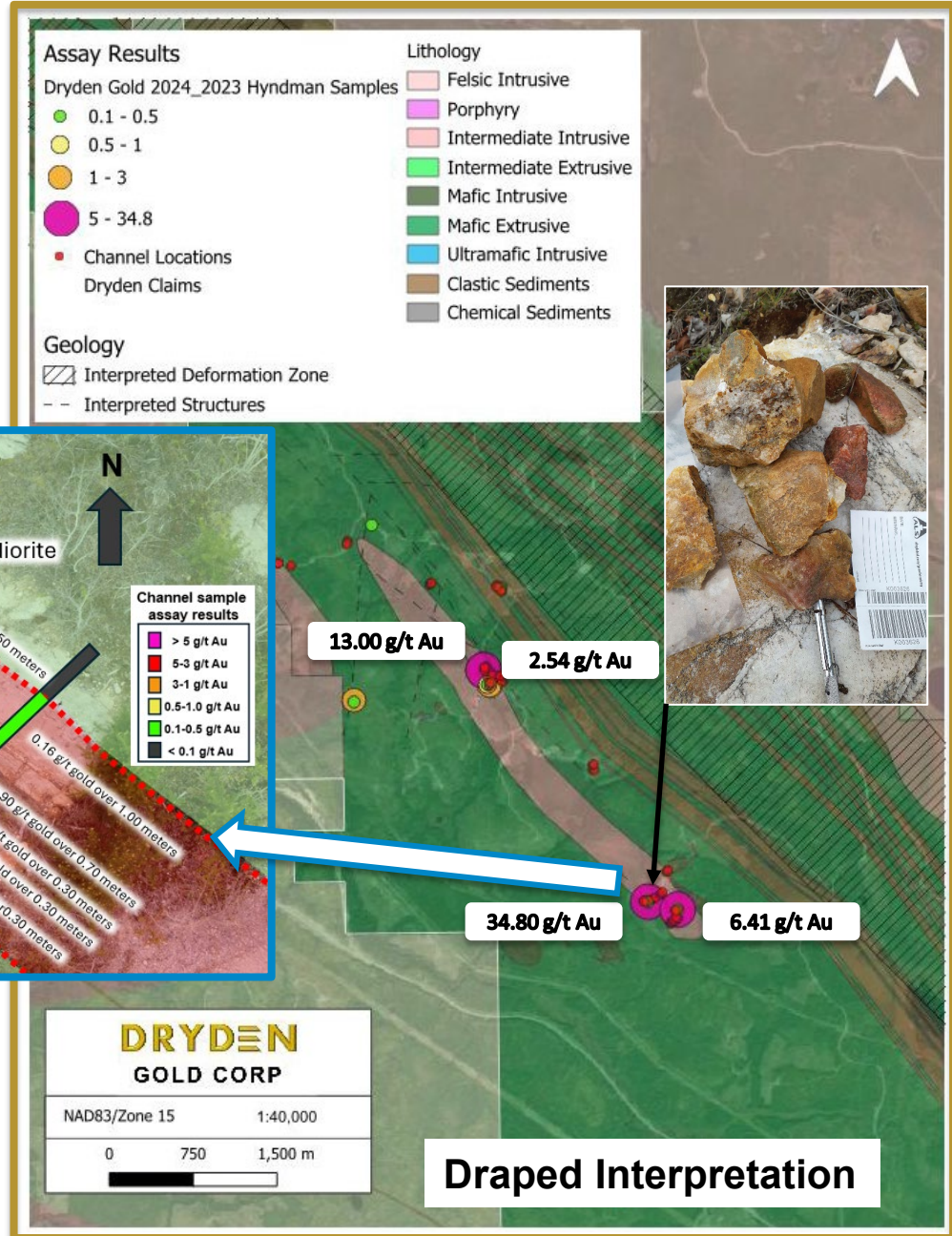
GOLD CORP

# Hyndman | Regional Exploration

- Robust 12 km by 2.5 km gold-in-till anomaly corridor unlocking a highly prospective district-scale opportunity with strong discovery potential.
- Successful initial drill program at Hyndman intersected gold mineralization in all six drill holes and demonstrates both grade and continuity within the system.
- The Anomaly Corridor remains open along strike and the Company continues to expand its land position by staking an additional 12,000 hectares based on gold-in-till anomalies
- A comprehensive exploration program and an aggressive 2026 drill program is being planned. With permitting underway.

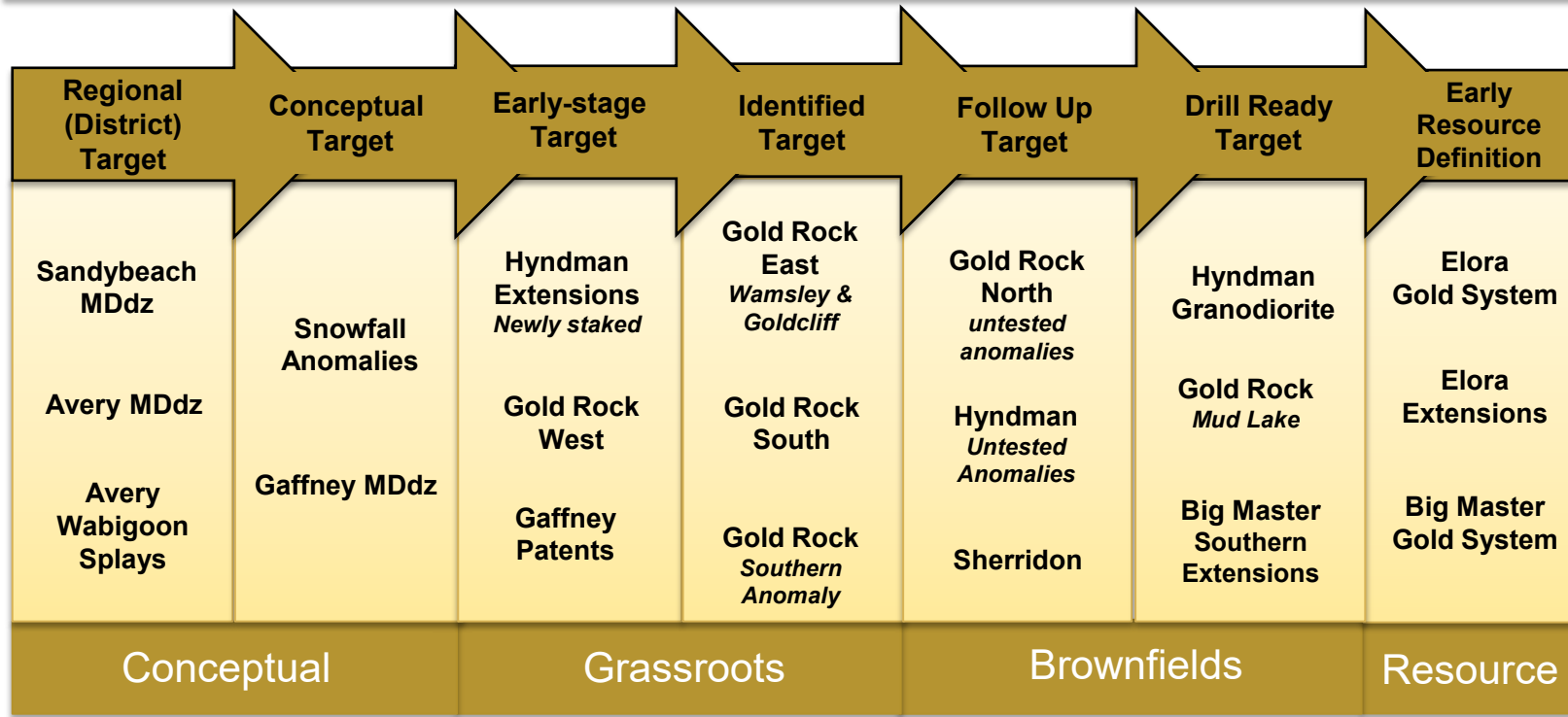


# Hyndman | Regional Exploration



# Dryden Gold's Resource Pipeline

- ▲ 2026 Exploration Emphasis on **Gold Rock Camp** Targets – Growing Gold Rock Target Area and Extensions on strike
- ▲ Focused on **Regional Discovery** – First ever drill program at **Hyndman Granodiorite** Target – **New Exploration Targets** from Property-wide Soil/Till program



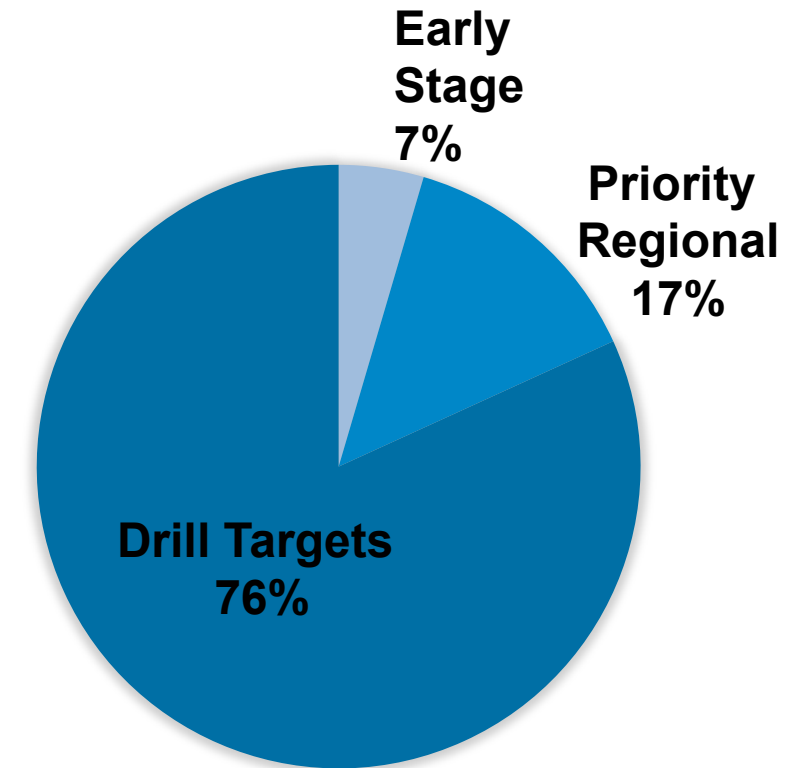
**DRYDEN**

GOLD CORP

# Exploration Budget | Marketing

11.0 M – 2026 Funded Exploration Budget		
Item	Property	Cost (\$CAD)
Additional sampling and surveys	<b>Early-Stage Regional Targets</b> <i>Follow-up on soil-till program</i>	\$500,000
Mapping, Channel samples, Compilation	<b>Regional Targets</b> <i>Gold Rock, Sherridon, Hyndman &amp; Other</i>	\$1,500,000
Drilling	<b>Drill Targets</b> <i>Gold Rock, Hyndman and Sherridon</i>	\$9,000,000

2026 Funded Exploration Budget begun in Q4 2025



32,000 Meters of Drilling in the 2026 Budget

Boxwood  
Harris  
Atlanta  
Roadshow

Atlanta  
April 30

Natural  
Resource  
Stock Expo

Atlanta  
May 1-2

Metals  
Investor  
Forum

Vancouver  
May 8-9

Top Shelf  
Florida  
Conference

Florida  
May 20-22

THE Mining  
Event of the  
North

Quebec City  
June 2-4

Capital  
Events  
Bermuda

Hamilton  
June 12-14

Canadian  
Mineral  
Exploration  
Convention

Winnipeg  
November 1-3

John  
Tumazos  
Virtual  
Conference

Virtual  
December 9

**DRYDEN**

GOLD CORP

# Why Dryden Gold?

- ▲ The Property
- ▲ The Team
- ▲ The High-Grade Gold
- ▲ The Geology
- ▲ The Jurisdiction
- ▲ The Infrastructure
- ▲ The Shareholders
- ▲ The Funding

## New 2026 Catalysts to Continue to Create Shareholder Value

- ▲ Continue to Grow Gold Rock Target Area
- ▲ Test for periodicity on strike in the Gold Rock Camp with drilling at Mud Lake
- ▲ Drill Test Hyndman Granodiorite Discovery
- ▲ Further test Sherridon Regional Target
- ▲ Review Property Wide Soil-Till Program with the goal of adding new regional targets



**DRYDEN**

GOLD CORP



# DRYDEN

## GOLD CORP

TSXV: DRY | OTCQX: DRYGF | FSE: X7W  
DRYDENGOLD.COM

### Contact:

**Trey Wasser** CEO & Director  
+1 (940) 368-8337  
[twasser@drydengold.com](mailto:twasser@drydengold.com)

**Maura Kolb** President & QP  
+1 (807) 632-2368  
[mjkolb@drydengold.com](mailto:mjkolb@drydengold.com)

[ir@drydengold.com](mailto:ir@drydengold.com)

