



# DRYDEN

---

## GOLD CORP

TSXV: **DRY** | OTCQB: **DRYGF** | FSE: **X7W**  
[drydengold.com](http://drydengold.com)

JANUARY 2026

# Acknowledgements & Forward-Looking Statements

***Dryden Gold Corp acknowledges all Indigenous Peoples and that it is operating on the traditional homelands of the Wabigoon Lake Ojibway Nation and Eagle Lake First Nation.***

*Certain statements contained herein constitute “forward-looking statements” within the meaning of the applicable Canadian securities legislation. These forward-looking statements are based on current expectations, estimates and projections about the Canadian mining and mineral exploration industry based on management’s beliefs and certain assumptions made by management. Readers are cautioned that such forward-looking statements are not guarantees of future performance and are subject to risks, uncertainties and assumptions that are difficult to predict, and the actual results and performance of Dryden Gold Corp. (the “Company”) may differ materially from the results implied by such statements. Readers are cautioned not to place undue reliance on any forward-looking statements. Unless otherwise required by law, the Company also disclaims any obligation to update its view of any such risks or uncertainties or to announce publicly the result of any revisions to the forward-looking statements made here.*

*This document contains proprietary information that is the property of Dryden Gold Corp. Neither this document, nor the proprietary information contained herein, shall be published, reproduced, copied, disclosed or used for any other purpose, other than the review and consideration of this document.*

*This presentation is not an offer, nor the solicitation of an offer to buy any securities. Such an offer, if made, will be made only through a prospectus or other such document issued in accordance with applicable securities laws, and other applicable laws, rules and regulations., Or pursuant to the applicable exemption from the requirement to deliver a prospectus, in accordance with applicable laws.*

*Historical statements contained in this document regarding past activities should not be taken as a representation that such trends or activities will continue in the future. In particular, historical results should not be taken as a representation that such trends will be replicated in the future. No statement in this document is intended to be nor may be construed as a profit forecast.*

*An investment in the Company is speculative and involves substantial risk and is only suitable for investors that understand the potential consequences and are able to bear the risk of losing their entire investment. Investors should consult with their own legal, tax and financial advisors with respect to all such risks before making an investment.*

*The Company is in the early stage of development and has a limited operational history, making it difficult to accurately predict business operations. The Company has limited resources and may run out of capital prior to becoming profitable. The Company may fail and investors may lose their entire investment.*

*The technical disclosure in this presentation has been approved by Maura J. Kolb, M.Sc., P.Geo. a Qualified Person as defined by National Instrument 43-101 of the Canadian Securities Administrators.*

**DRYDEN**  
GOLD CORP





# Key Value Drivers



## Experienced Management

**History of success** in building junior mining companies and navigating M&A to create shareholder value

**Technical team** has extensive regional experience leading the exploration team at the Red Lake Mine



## Investment Upside

**High-grade gold** across the entire Dryden District

**Limited historic drilling** – 30,000 meters

**System has never** been drilled tested at depth

**Regional Greenfield targets** at Hyndman & Sherridon

**Strategic investment** from Centerra Gold



## Favorable Mining Jurisdiction

**Excellent infrastructure**, including grid power

**Major highway access** and logging roads

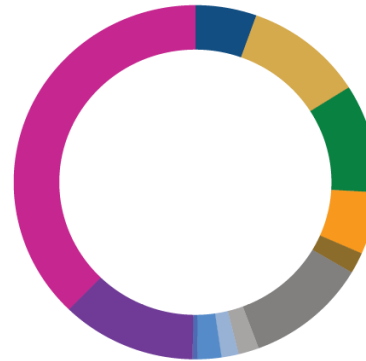
**Year-round drilling**

**Significant tax benefits** and government grants

**Collaborative relationships** with First Nations communities



## MAJOR SHAREHOLDERS



Management & insiders	- 5.45%
Alamos Gold (NYSE-AGI)	10.57%
Centerra Gold Inc	9.90%
EuroPac Gold Fund	5.68%
Sprott Asset Management	1.91%
Delbrook Capital	10.82%
Eric Sprott	1.84%
Rob McEwen	1.53%
Dynamic Funds	2.09%
Robert Quartermain	0.46%
Other Institutions	12.00%
Public Float	37.75%

## SHARE STRUCTURE

Contingent on post private placement.

Trading Symbols	TSXV: DRY OTCQB: DRYGF FSE: X7W
Current Issued and Outstanding	217,601,618
Warrants Outstanding	12,991,728
ESOP Options Outstanding	9,400,000
Fully Diluted	239,993,346
Cash Balance	\$10,800,000

## NEWSLETTER WRITER COVERAGE

JEFF CLARK <a href="#">The Gold Advisor</a>	BRIEN LUNDIN <a href="#">The Gold Newsletter</a>	CHEN LIN <a href="#">Chen's Stock Picks</a>
--	---	--

## ANALYST COVERAGE

CLARUS SECURITIES Varun Arora	SCP CAPITAL Brandon Gaspar	COULOIR CAPITAL Ron Wortel	KPG WEALTH Pranta Sen Gupta	Independent Mining Analyst Eric Lemieux, M.Sc. P. Geo.
----------------------------------	-------------------------------	-------------------------------	--------------------------------	---

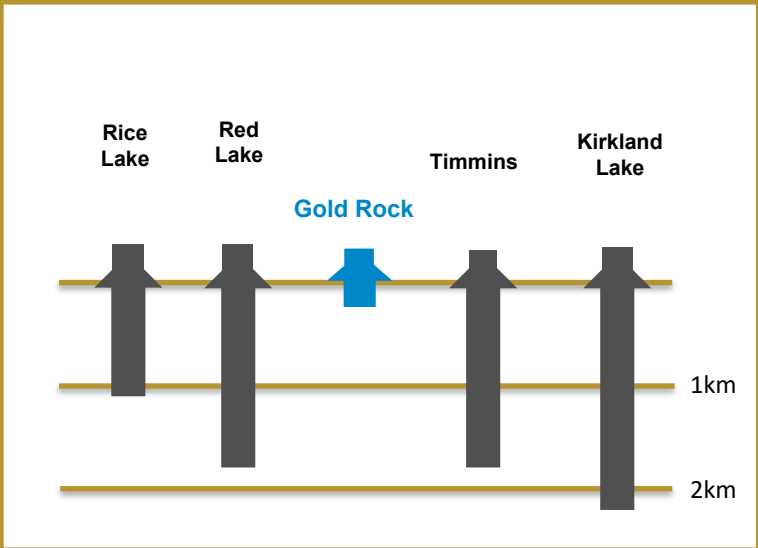
**DRYDEN**

**GOLD CORP**

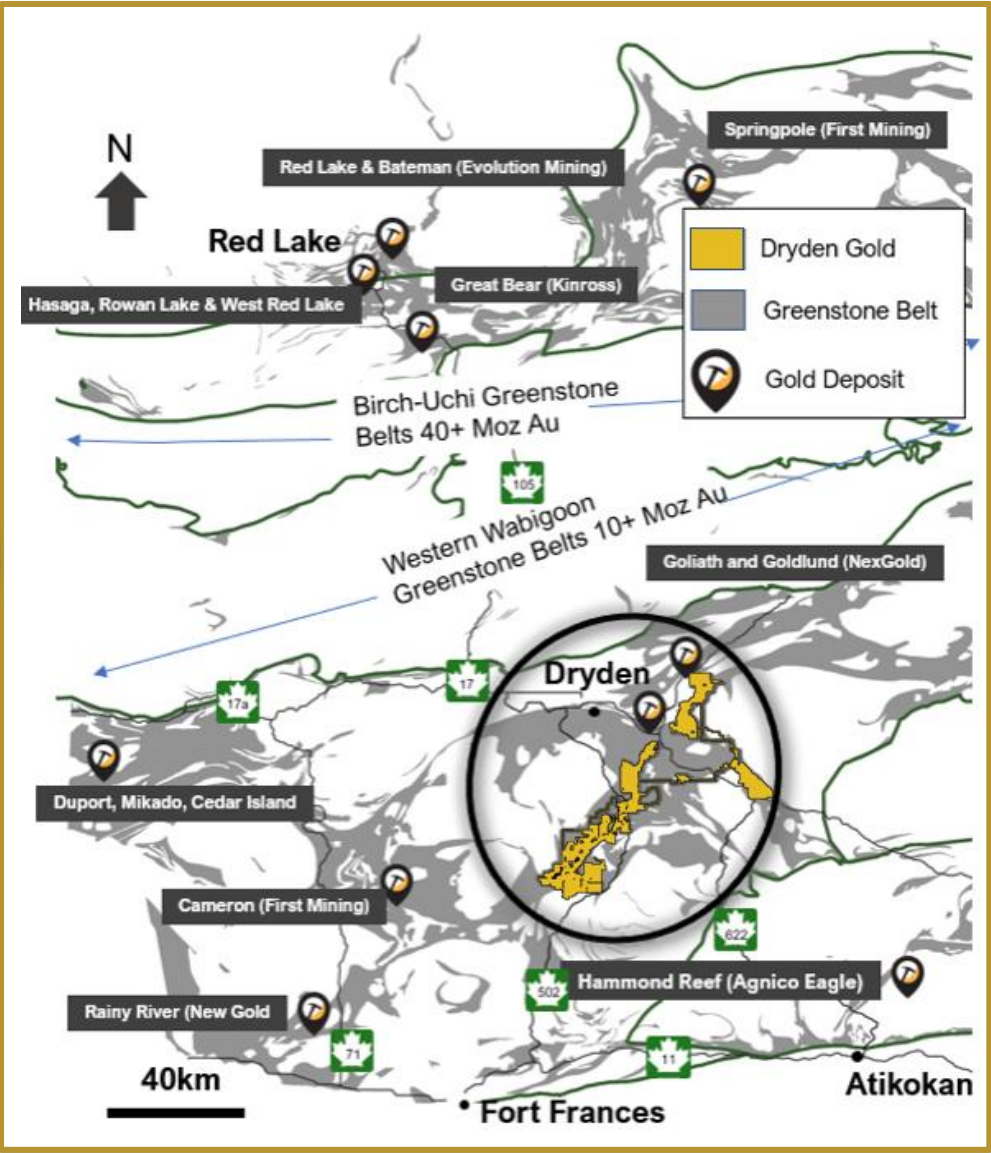
TSXV: **DRY** | OTCQB: **DRYGF** | FSE: **X7W** DRYDENGOLD.COM | 3

# Prolific Gold Region | An Under Explored District

## Archean Lode Gold Mines Camps Central Canada



Limited exploration & historic mining district-wide at only shallow depths



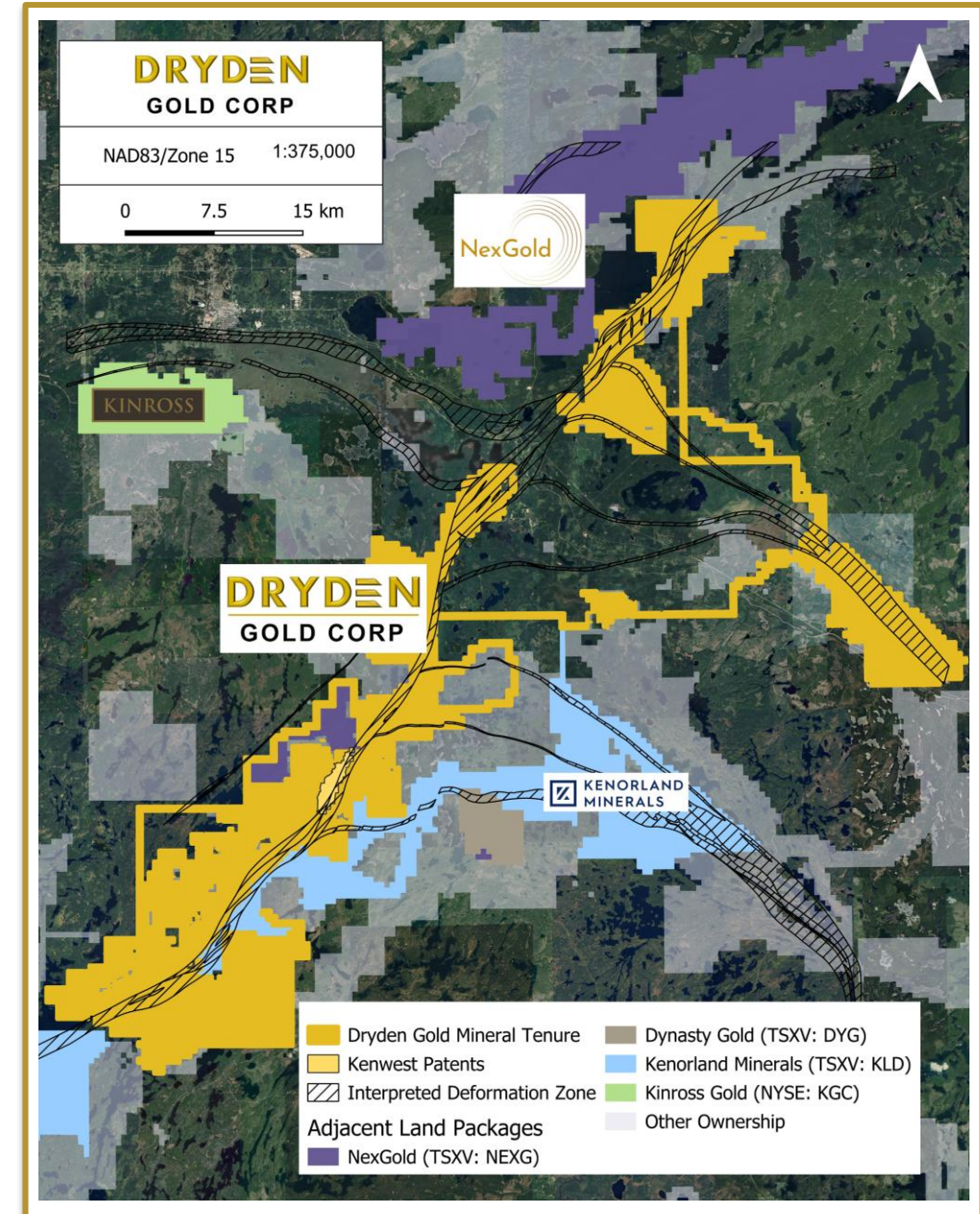


## Strategic Land Package

- ▲ Over 702 km<sup>2</sup> (70,250 hectares) consolidated & 100% owned by Dryden Gold Corp.
- ▲ Excellent infrastructure – Roads, power & labor
- ▲ 50 km strike covering regional gold bearing MDdz structure (Manitou-Dinorwic deformation zone)
- ▲ Two additional cross-cutting regional gold-bearing fault structures

## Strategic Exploration Method

- ▲ All oriented drill core to enhance structural interpretation
- ▲ Fully assayed drill core to define stacked structures in different host rocks
- ▲ Smaller drill passes, integrating new data for each phase insuring geological & structural controls go into targeting
- ▲ Year-round drilling at industry low cost of \$250/m (all in)



# District Scale High-Grade Gold | Fully Funded for 2026

## Gold Rock Camp Drill Highlights

- ▲ 301.67 g/t gold over 3.90 meters  
*including 1,930.00 g/t over 0.60 meters*
- ▲ 55.34 g/t gold over 3.50 meters
- ▲ 3,497.0 g/t gold over 8.50 meters \*historic drill hole\* *including 53,700 g/t gold over 0.55 meters*

## Hyndman Field Samples

- ▲ 34.80 g/t gold grab sample 2024
- ▲ 13.00 g/t gold grab sample 2023

## Hyndman Channel Samples

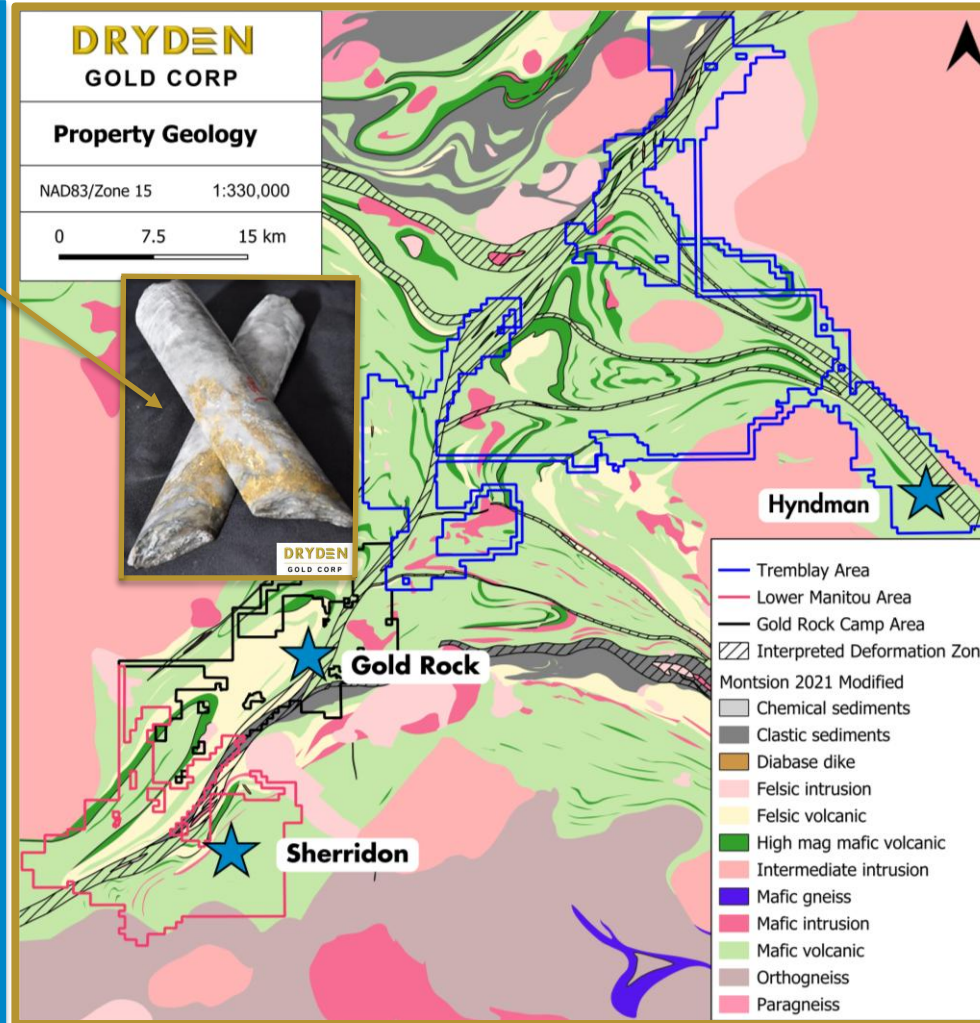
- ▲ 23.32 g/t Au over 2.80 m  
*incl. 24.79 g/t Au over 1.50 m*  
*incl. 36.90 g/t Au over 0.70 m*

## Sherridon Field Samples

- ▲ 617.00 g/t gold grab sample (historic)
- ▲ 184.50 g/t gold grab sample (historic)

## Sherridon Drill Highlights

- ▲ 1.28 g/t gold over 19.00 meters  
*including 36.40 g/t over 0.50 meters*



## Two-Prong Exploration Plan

### Gold Rock Camp - Our Flagship

- ▲ Fully Defining the Structures and Controls of High-Grade Gold
- ▲ Deeper Drilling
- ▲ Proving the Periodicity
- ▲ Developing Multiple Target Areas in the Gold Rock Camp (20 km)

### Regional Discoveries

#### Hyndman

- ▲ DRY's First Regional Discovery
- ▲ Potential 4-4km Strike
- ▲ Channel Samples Generate Drill Test

#### Sherridon

- ▲ First Pass Drilling & Re-Logging
- ▲ Defining Broad Mineralized Zones
- ▲ New Structural Interpretation
- ▲ Planning Follow-up Drilling

**DRYDEN**

GOLD CORP

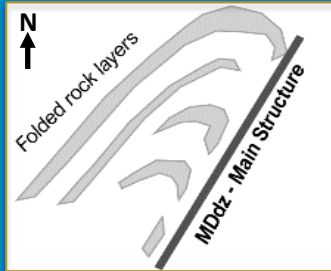
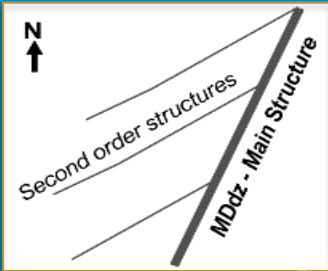
TSXV: **DRY** | OTCQB: **DRYGF** | FSE: **X7W** DRYDENGOLD.COM



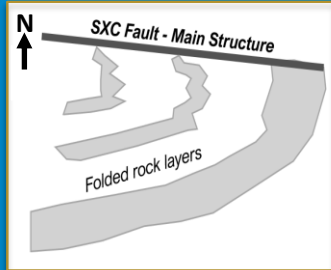
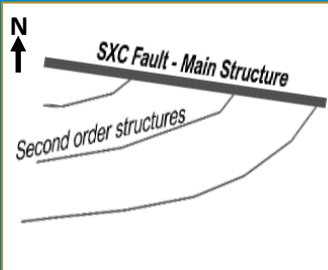
# Gold Rock Camp

## Similar Geological Setting to Red Lake

### Dryden Gold Corp. Gold Rock Area Geology



### Red Lake Mine Geology



Similar geological setting, rock types with regional folding and structural geometry

Favorable geological gold traps for high-grade gold

Various styles of gold mineralization

*Quartz veins w/ free gold, shears hosting gold, disseminated sulfides*

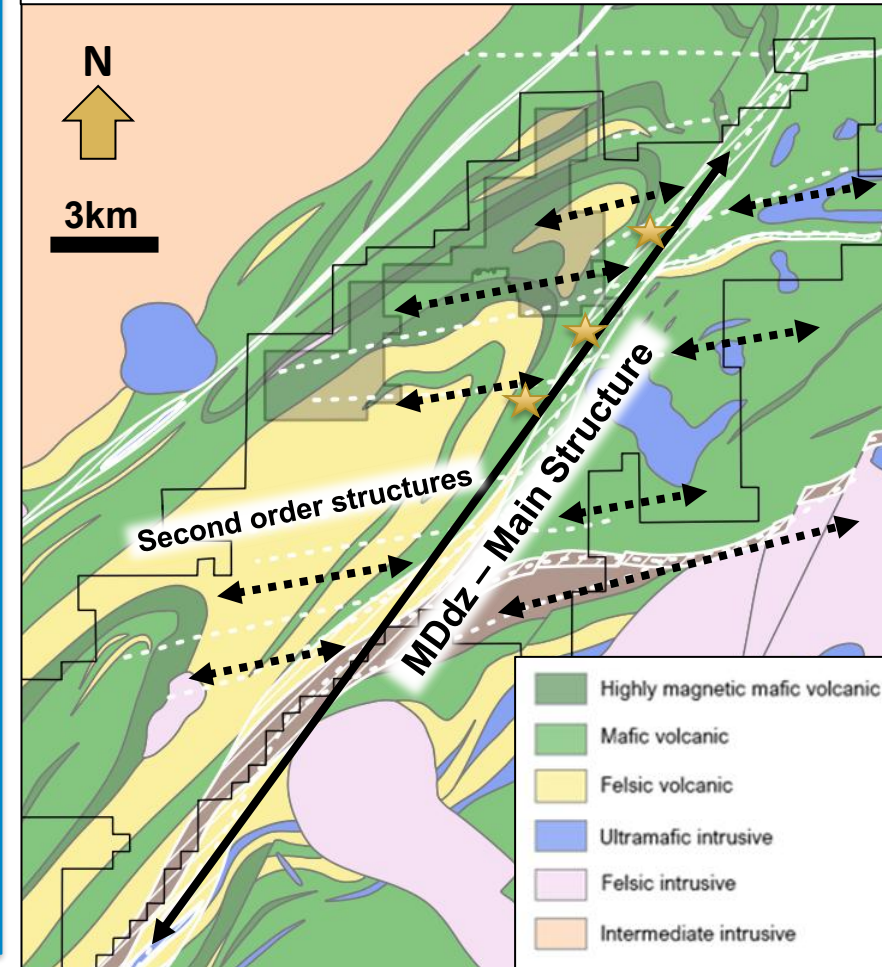
Very similar footprint at Red Lake and Gold Rock Camp

Stacked zones of mineralization in different structural planes at Red Lake & Gold Rock

Periodicity to these mineralized areas

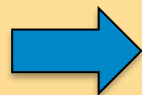
Red Lake discovered through mineralization outcropping on surface like Gold Rock Camp

### Gold Rock Camp Geology

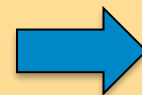


# Gold Rock | Targeting High-Grade Structures

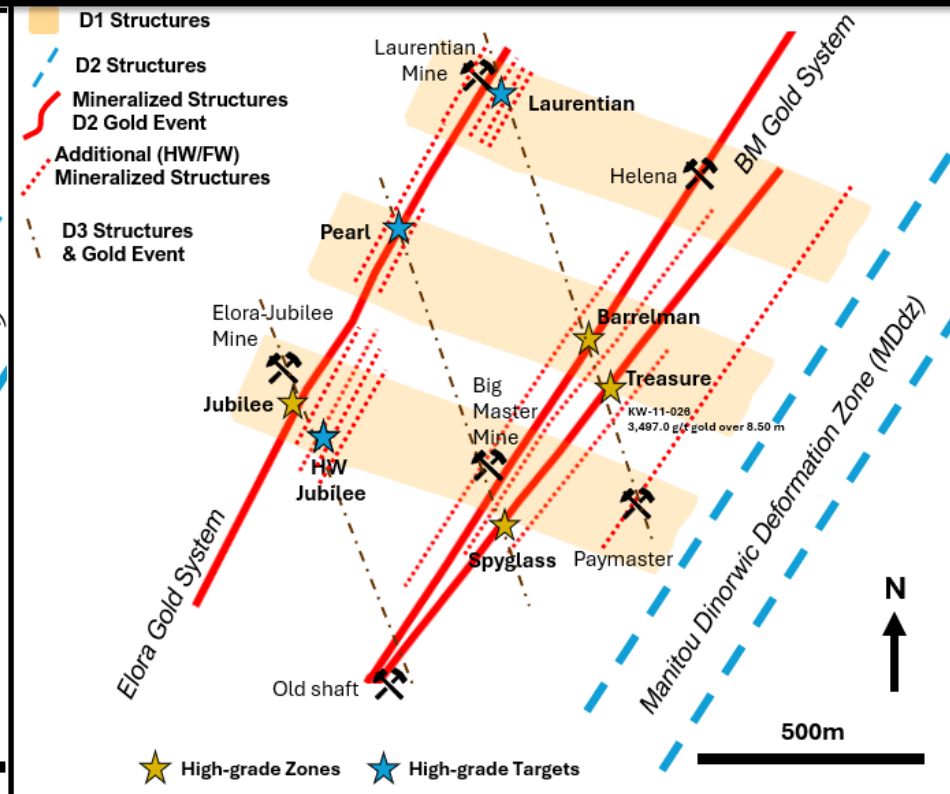
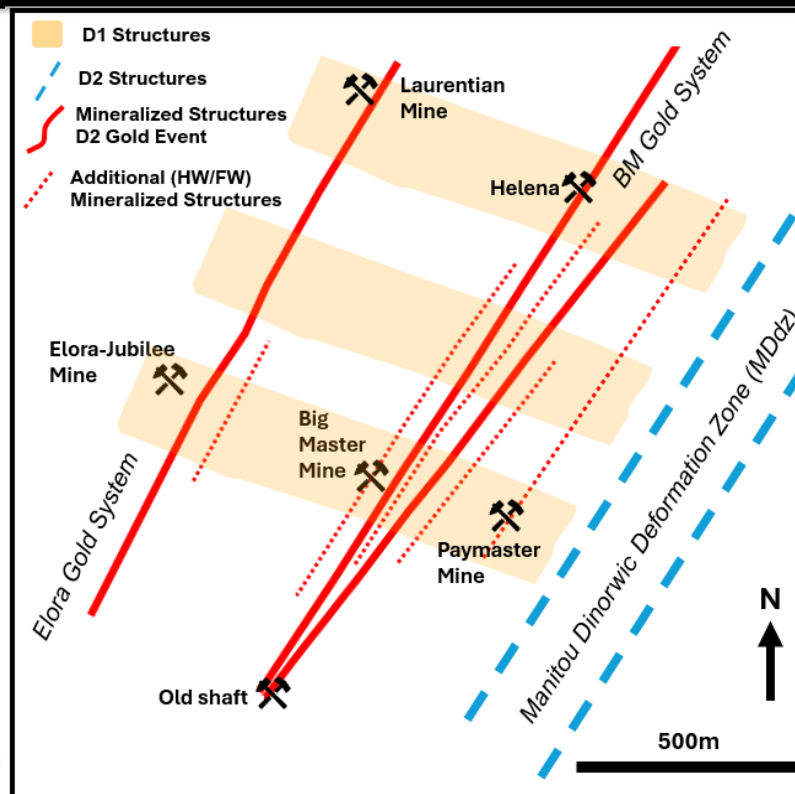
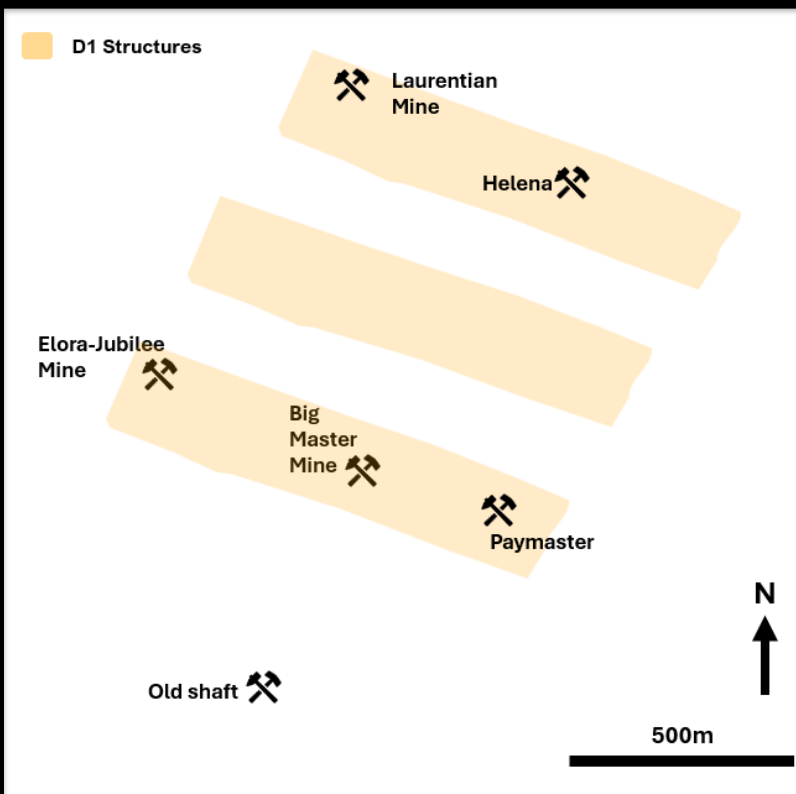
First Deformation Event



Second Deformation  
& Gold Mineralization Event



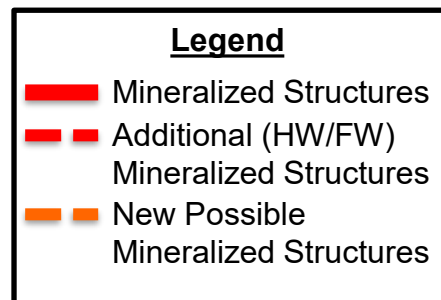
Third Deformation  
& Gold Mineralization Event



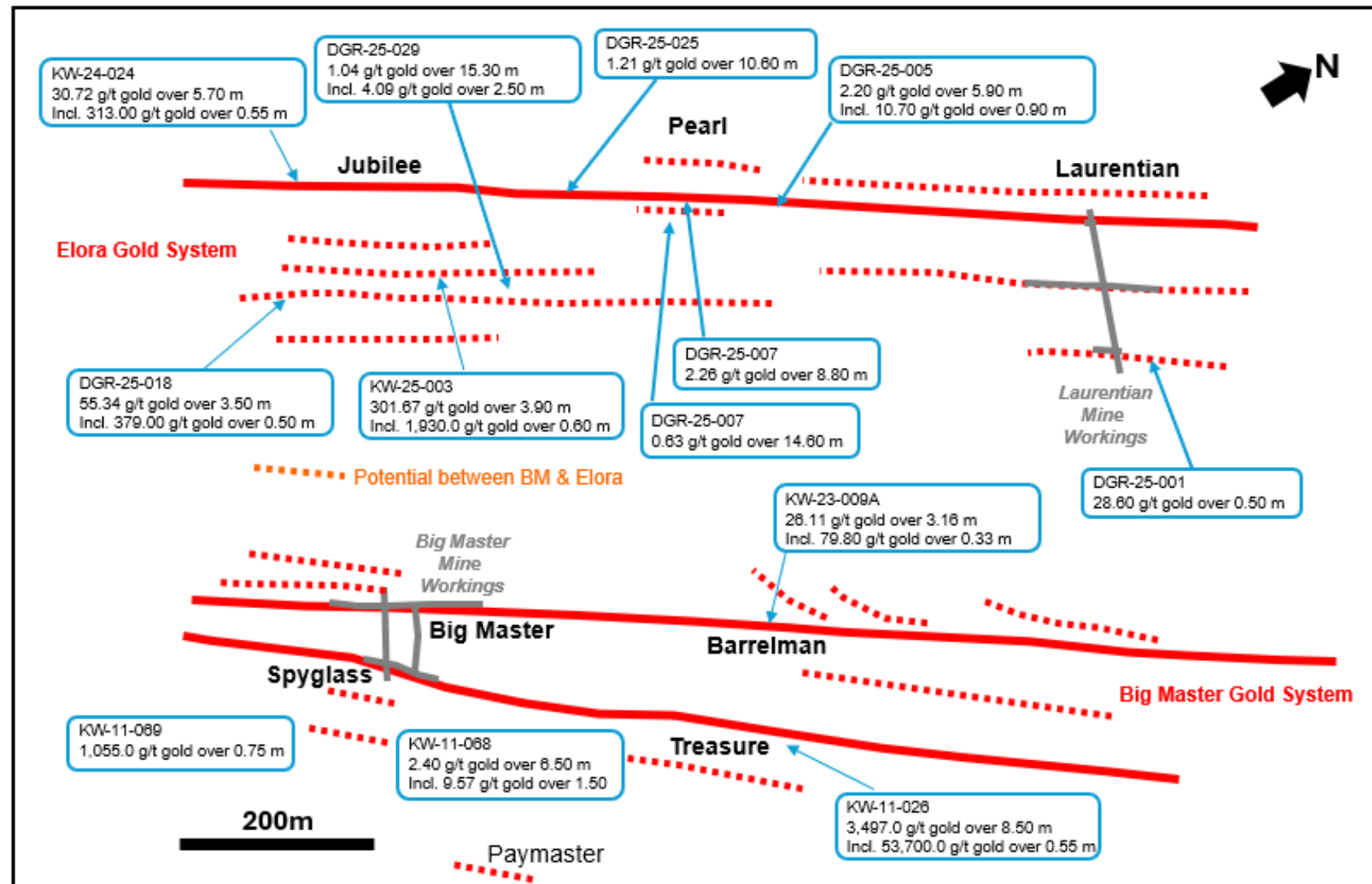
Note - figures are simplified schematic maps of the interpreted deformation and mineralization history



# Gold Rock Target Area | Multiple Mineralized Structures



Scan for explanation videos:

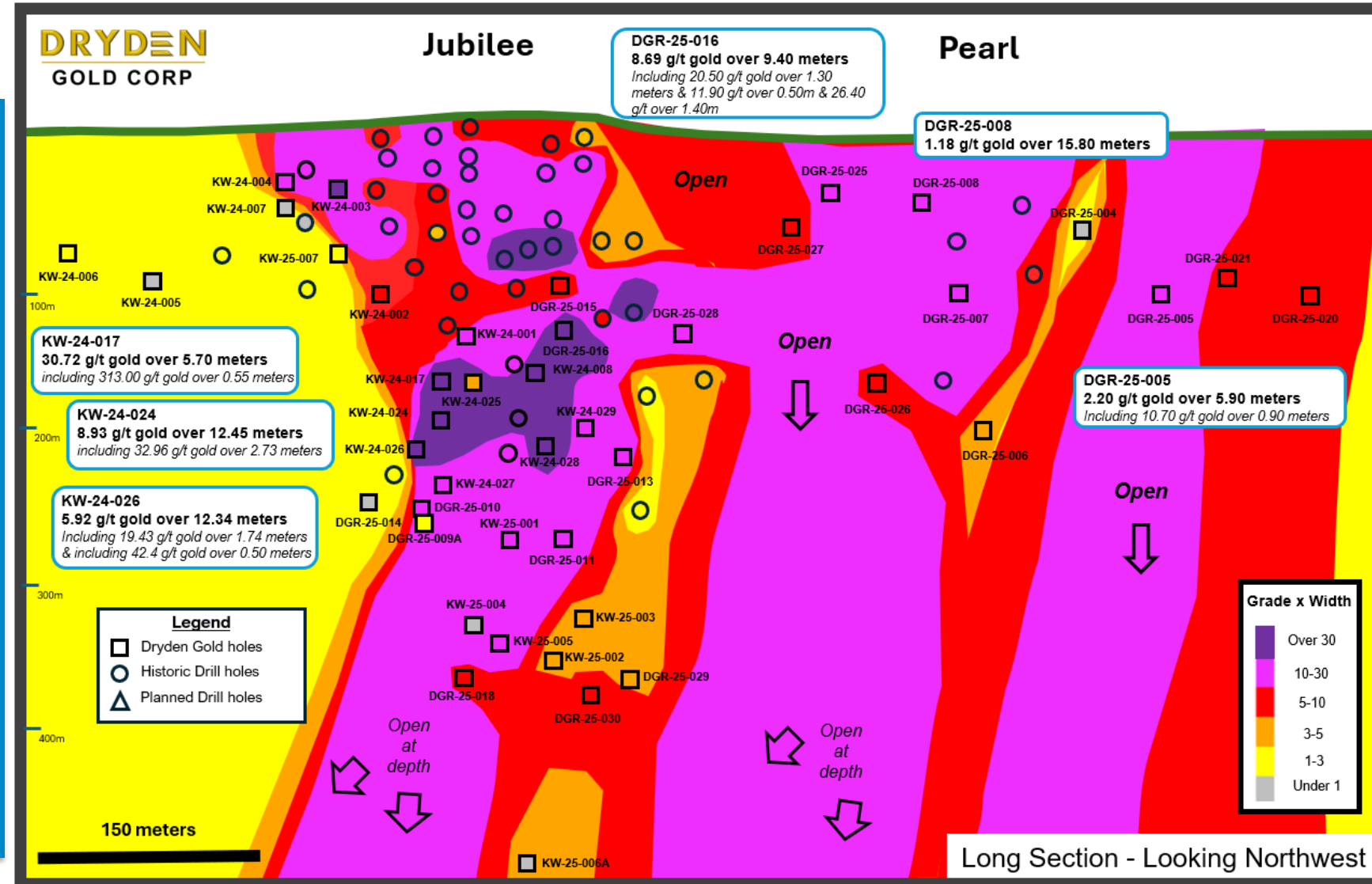


# Elora Gold System | Elora Shear - Jubilee & Pearl Zones

## Expanding Strike & Depth

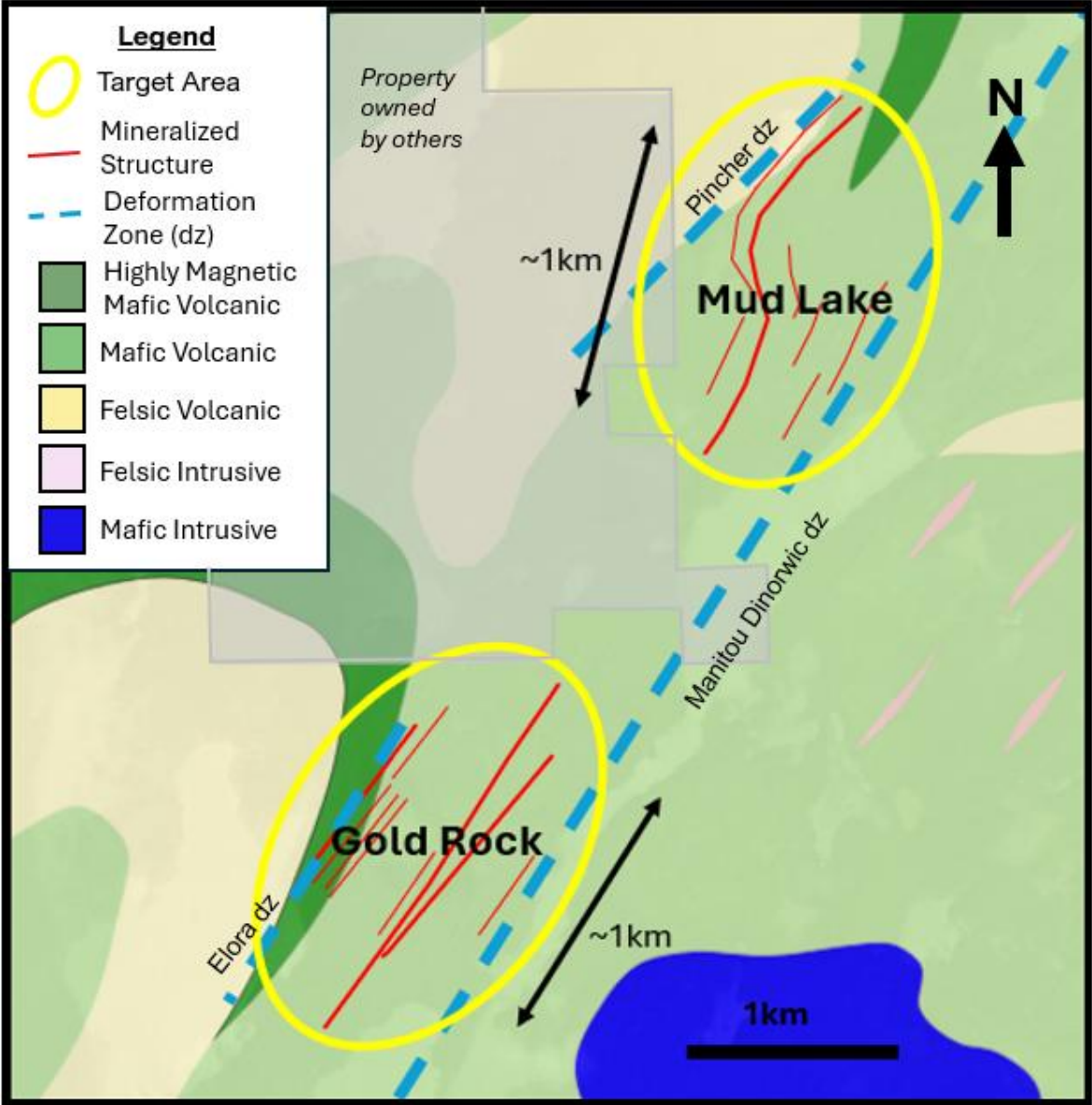
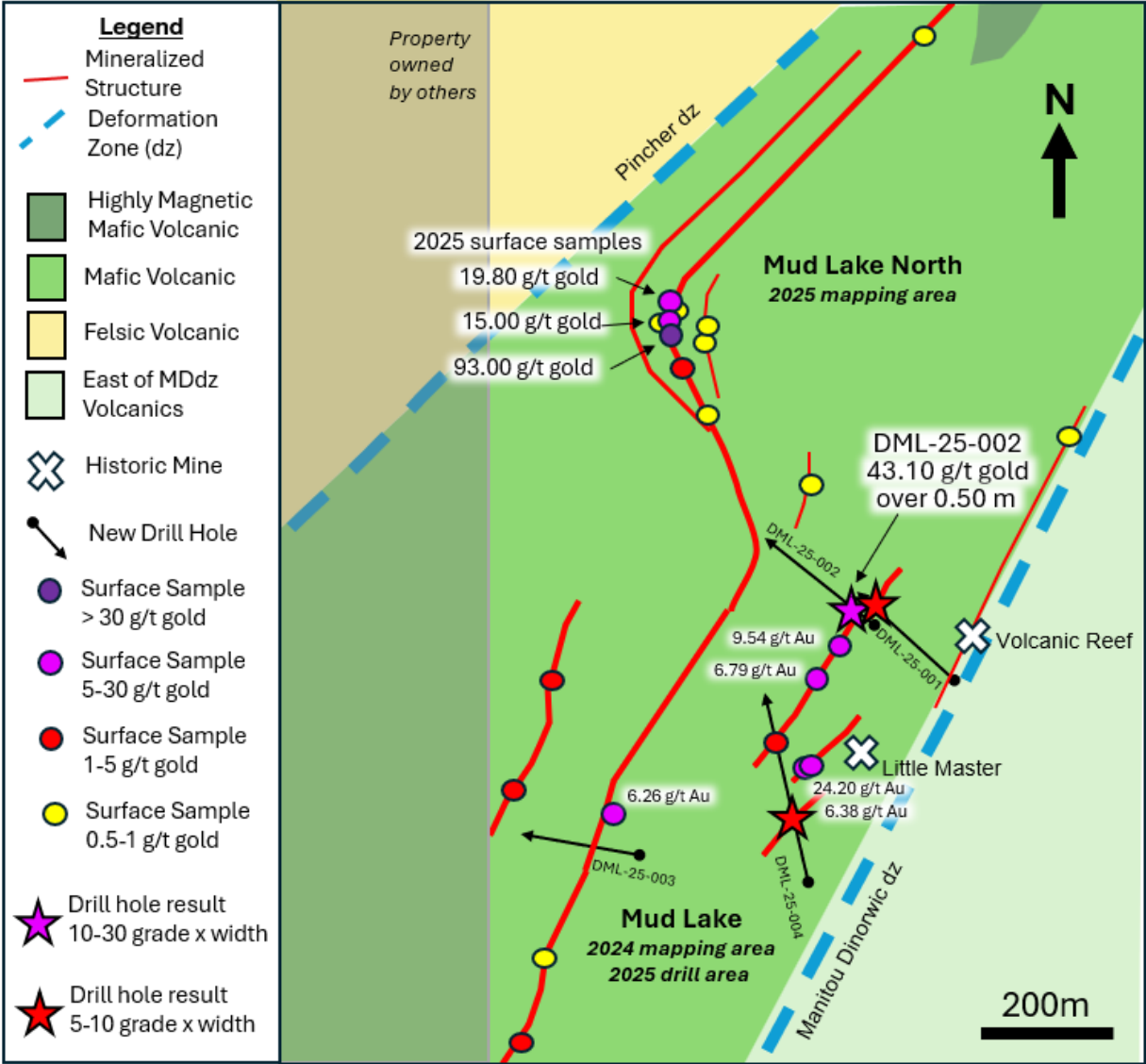


- Targeting sheared basalt with sulphide mineralization & quartz stringer veins
- Testing gold mineralization continuity down plunge and along strike



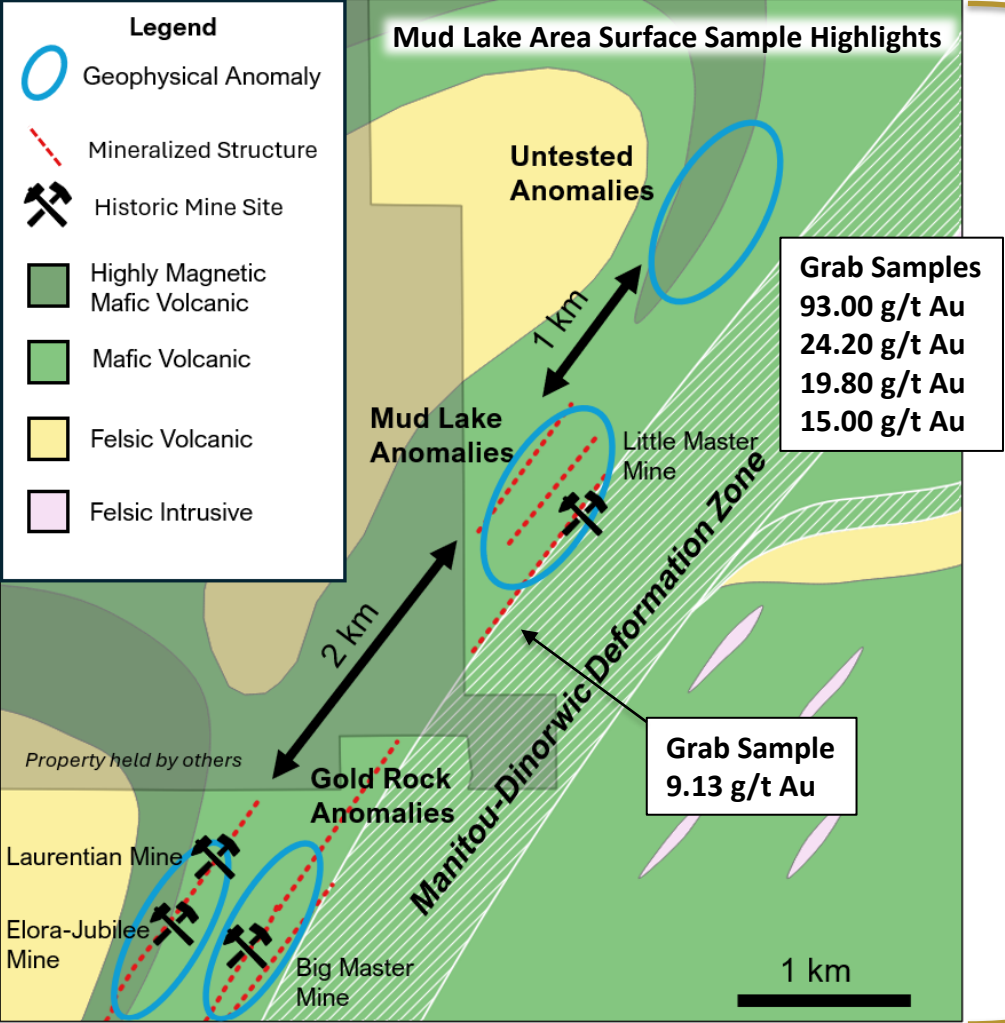


# Gold Rock | Deposit Scale Periodicity | Mud Lake

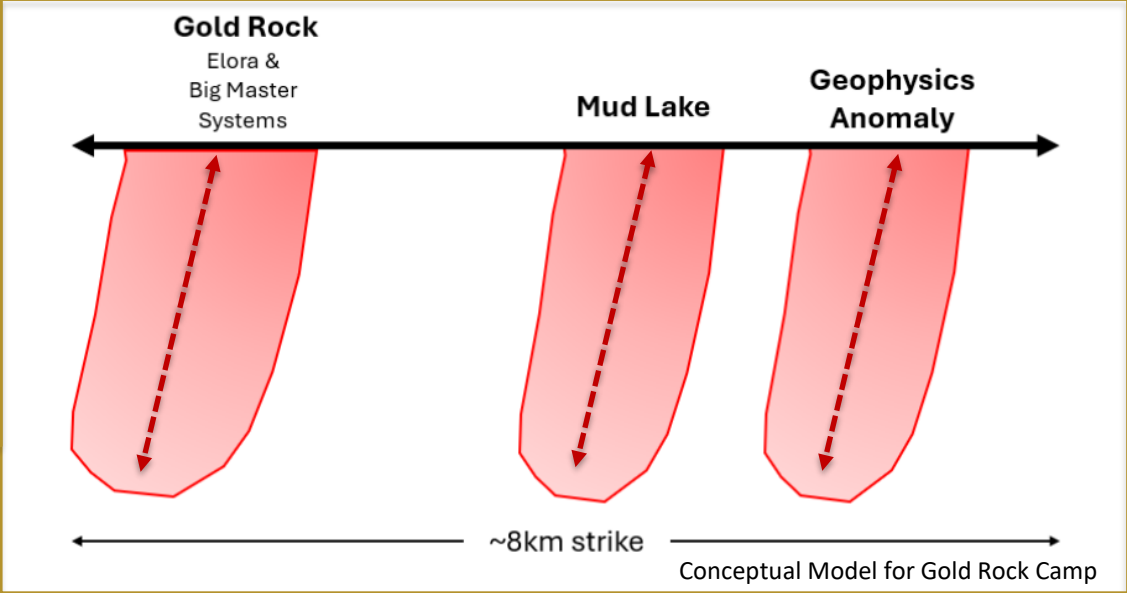


# Gold Rock | Periodicity | Another Comparison to Red Lake

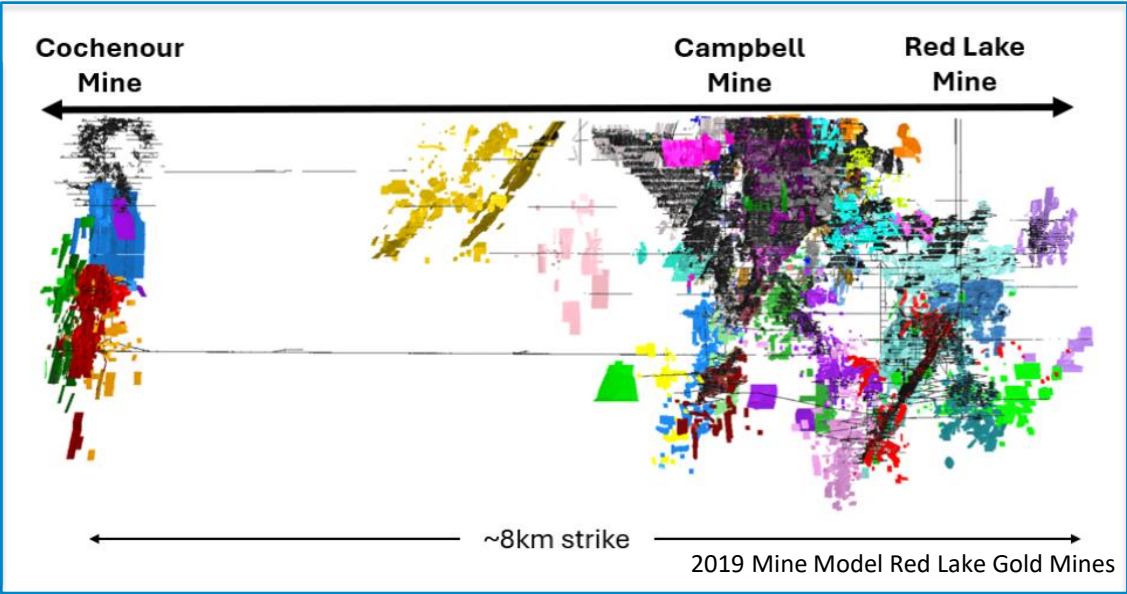
Gold Rock Trend Map - Gold Rock, Mud Lake Area and Untested



**Long Section**  
from  
Gold Rock  
to  
Mud Lake  
to  
Untested  
Geophysics  
Anomalies



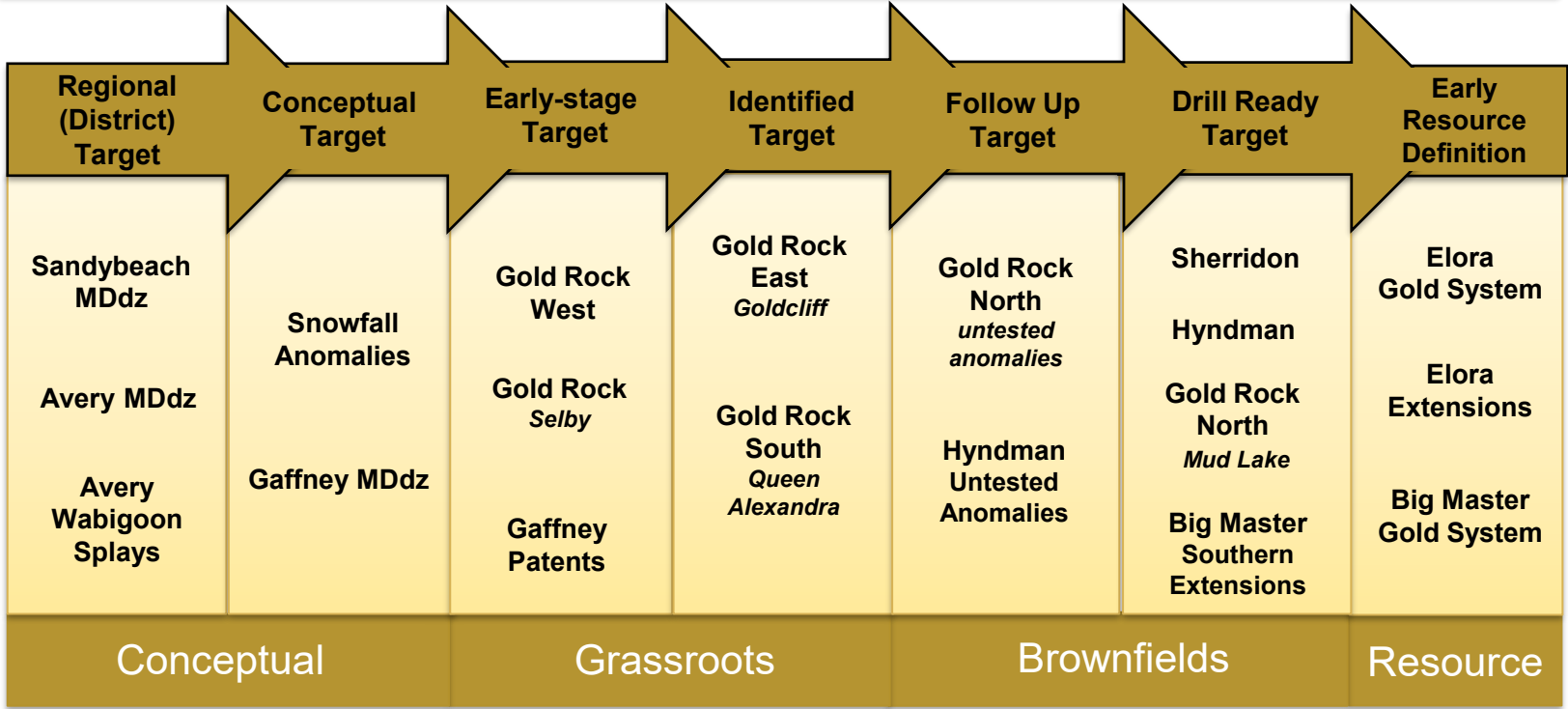
**Long Section**  
from  
Red Lake  
Mine  
to  
Campbell  
Mine  
To  
Cochenour  
Mine





# Dryden Gold's Resource Pipeline

- 2025 Exploration Emphasis on **Gold Rock Camp** Targets - **Drill Permitted** for Northern Extensions
- Sherridon & Hyndman**- Two Regional Target Areas Identified and **Now Permitted** for Further Field Work & Drilling During 2025 Campaign

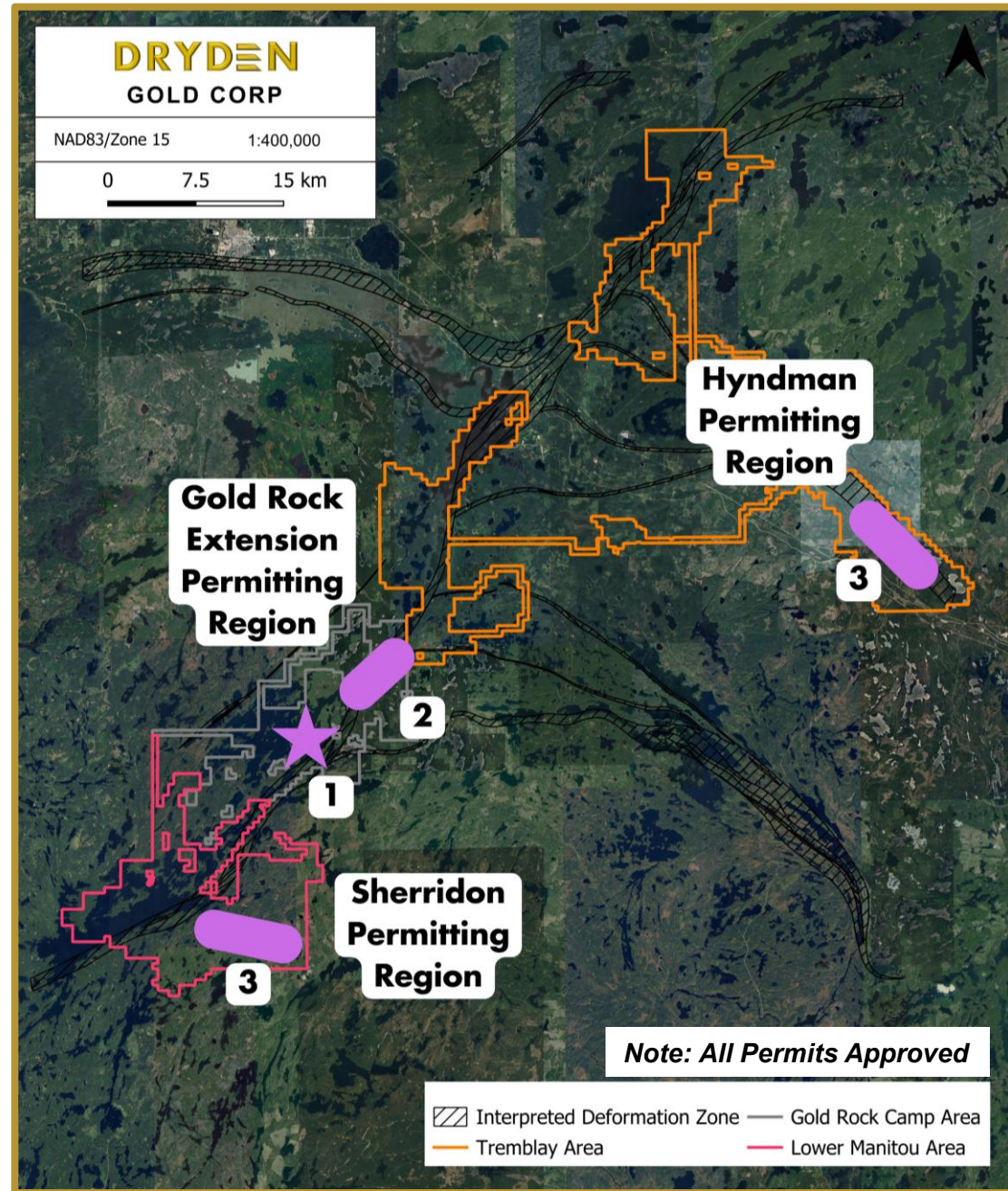




# 2026 Regional Exploration

## Regional Exploration Targeting New Discoveries

- ▲ Highly **prospective** land package
- ▲ **Numerous** Regional targets
- ▲ Structural Synthesis – Tectonic Evolution
- ▲ **District Scale Potential**
- ▲ Multiple Deposit Models
  - ▲ **Sherridon** (Ultramafic Host)
  - ▲ **Hyndman** (Granodiorite Host)





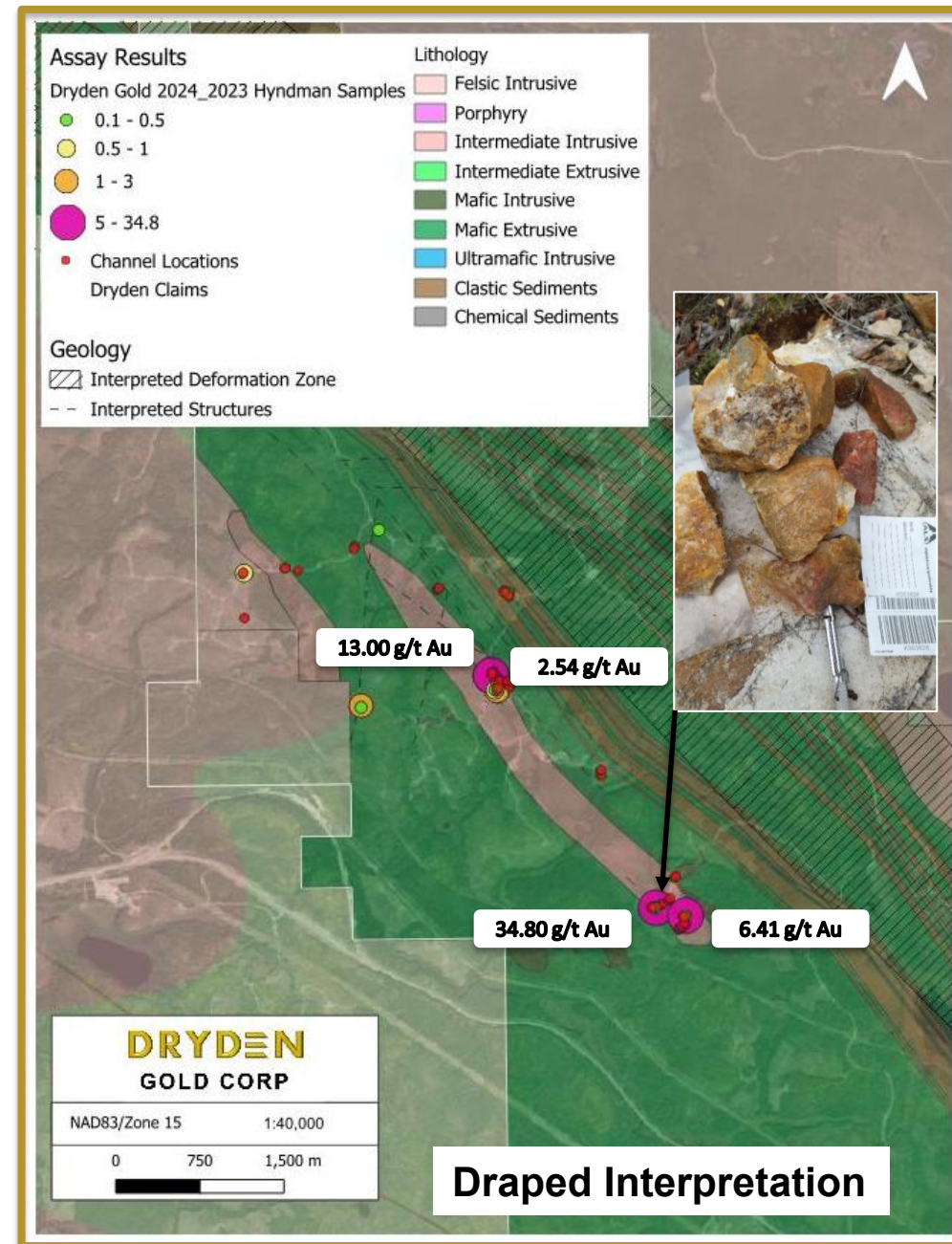
# Hyndman | Regional Exploration

- Field programs in 2024 & 2023 discovered new gold showings with 19 samples returning gold values higher than 1.00 g/t gold and 6 samples returning grades over 5 g/t gold.

- Channel sample program from 2025 width of mineralization and sampled more difficult terrane to sample with traditional rock and hammer methods.
- 23.32 g/t gold over 2.80 meters**, incl. 24.79 g/t gold over 1.50 meters also incl. 36.90 g/t gold over 0.70 meters

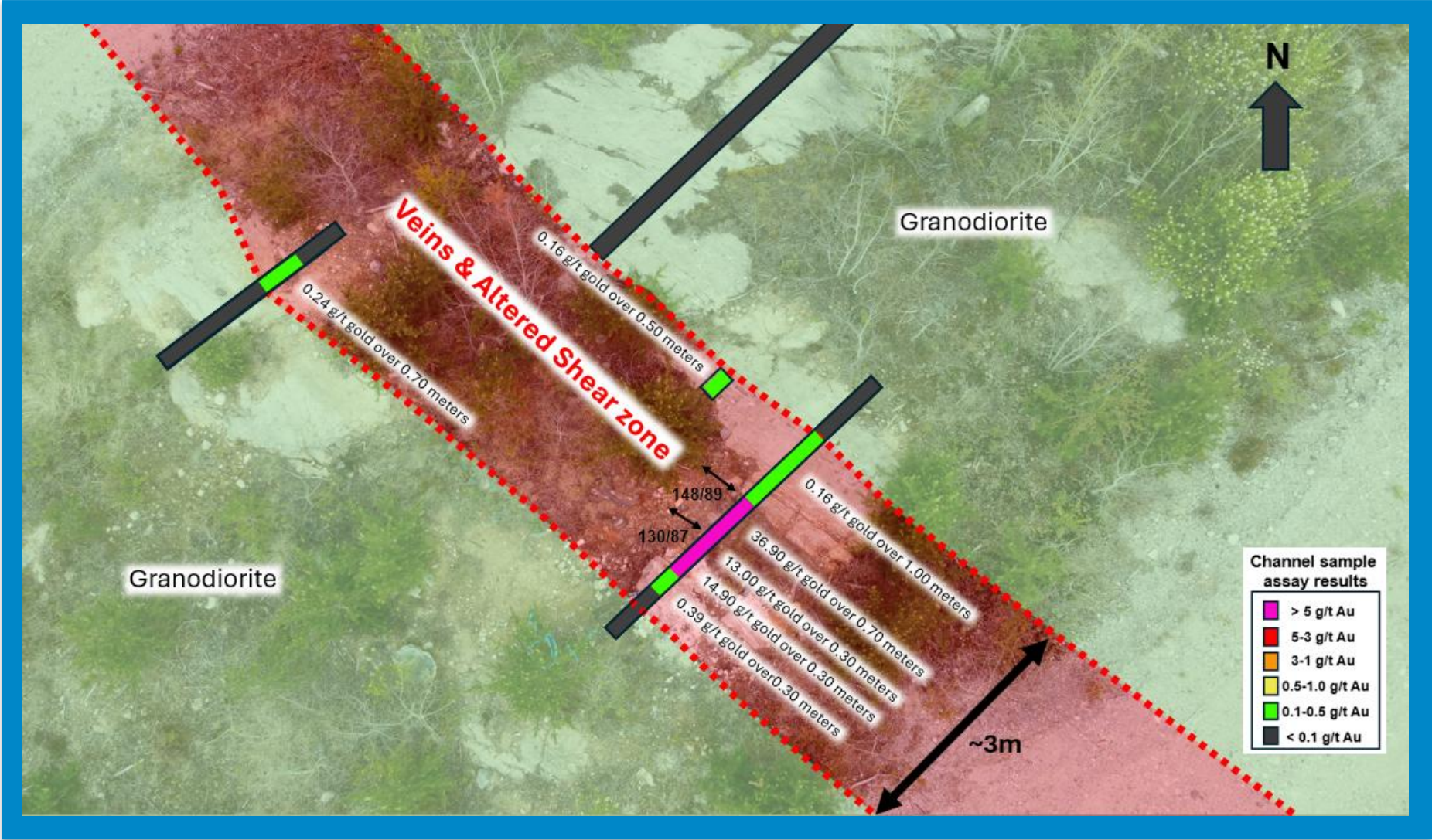
- Soil and till sampling program across the property (including Hyndman) will help vector in on the full potential for additional gold-bearing targets.

**DRYDEN**  
GOLD CORP





# Hyndman | Channel Sample Results



## Highlights Hyndman Channel Program

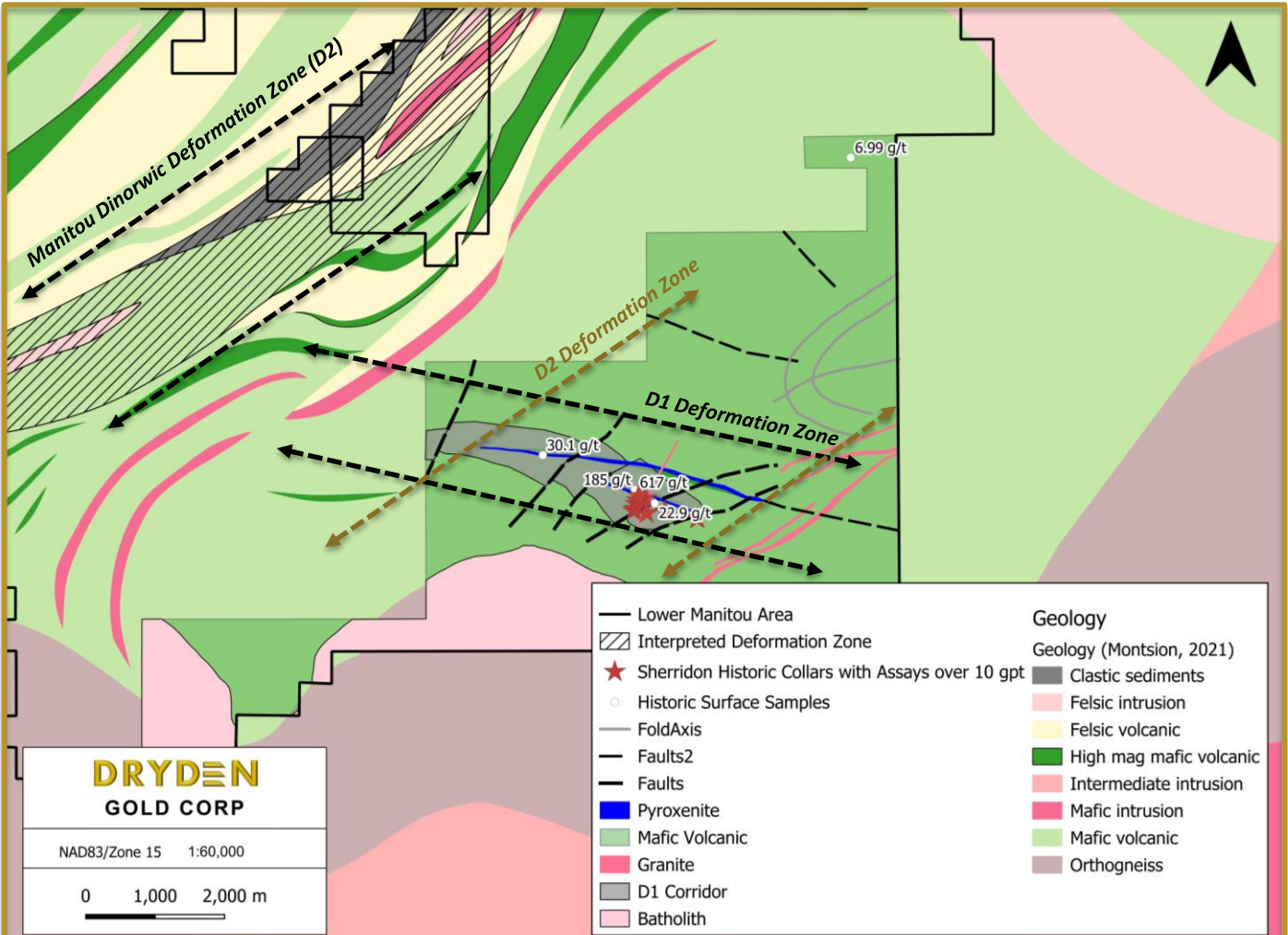
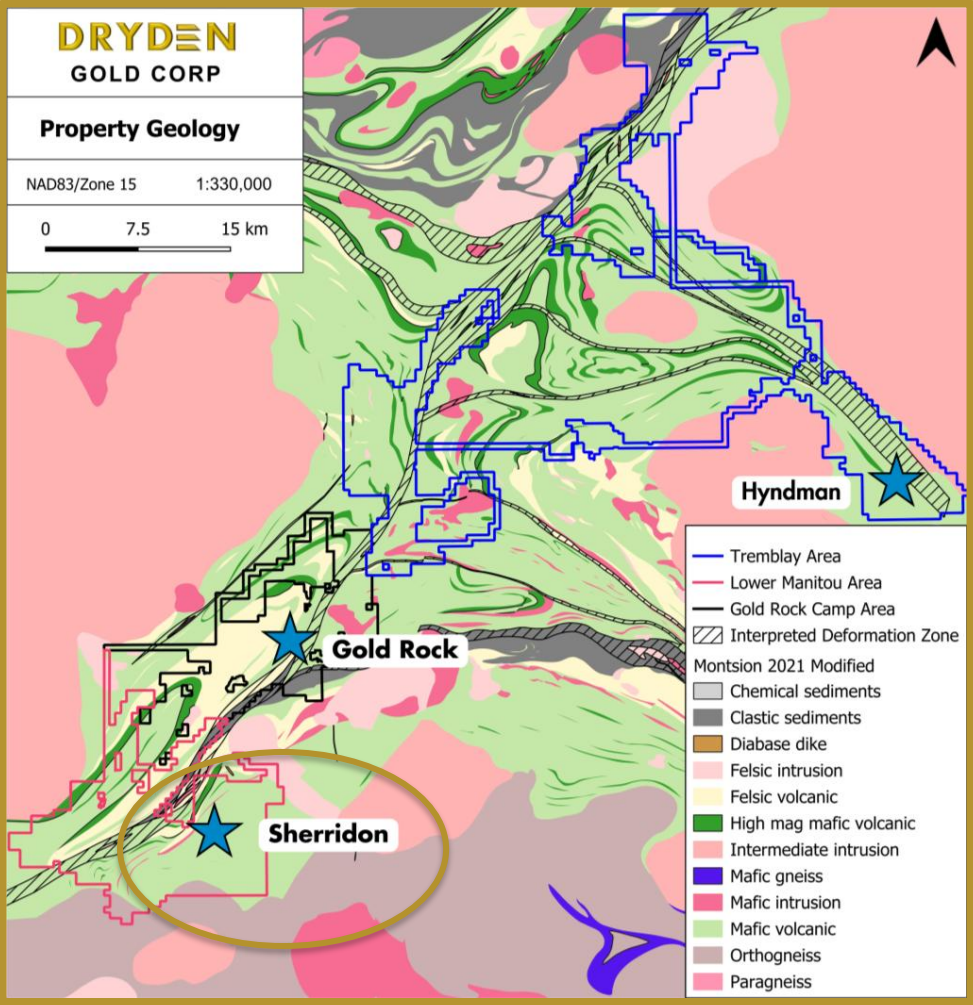
**23.32 g/t Au over 2.80 m**  
*incl. 24.79 g/t Au over 1.50 m  
& incl. 36.90 g/t Au over 0.70 m*

Gold mineralization  
hosted in  
veining and shear zone

Potential for  
4 km's of mineralization  
based on trend of  
granodiorite host



# Sherridon | Regional Exploration

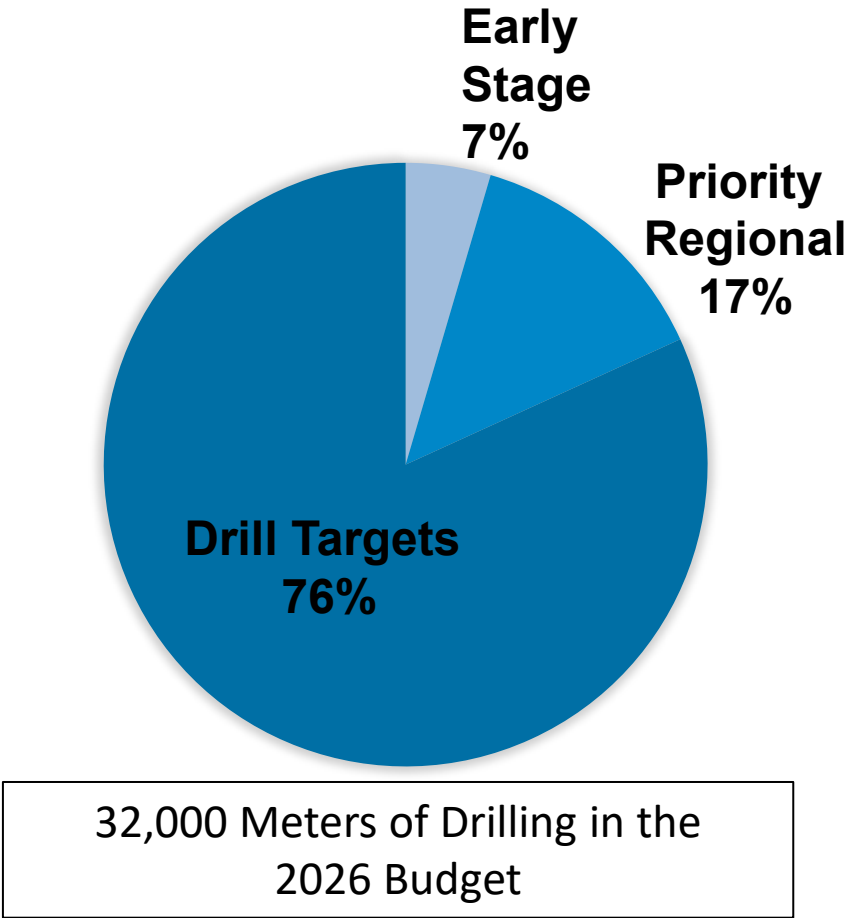


Soil & Till data being integrated into regional targeting.  
Geophysical inversion study underway to vector in on targets.

# Exploration Budget | Marketing

11.0 M – 2026 Funded Exploration Budget		
Item	Property	Cost (\$CAD)
Additional sampling and surveys	<b>Early-Stage Regional Targets</b> <i>Follow-up on soil-till program</i>	\$500,000
Mapping, Channel samples, Compilation	<b>Regional Targets</b> <i>Gold Rock, Sherridon, Hyndman &amp; Other</i>	\$1,500,000
Drilling	<b>Drill Targets</b> <i>Gold Rock, Hyndman and Sherridon</i>	\$9,000,000

2026 Funded Exploration Budget begun in Q4 2025



32,000 Meters of Drilling in the 2026 Budget





# Why Dryden Gold?

- ▲ The Property
- ▲ The Team
- ▲ The High-Grade Gold
- ▲ The Geology
- ▲ The Jurisdiction
- ▲ The Infrastructure
- ▲ The Shareholders
- ▲ The Funding

## New 2026 Catalysts to Continue to Create Shareholder Value

- ▲ Continue to Grow Gold Rock Target Area & Test for periodicity on strike at the Gold Rock Camp (Mud Lake & Other targets)
- ▲ Drill Test Hyndman Discovery
- ▲ Further test Sherridon Regional Target
- ▲ Review Property Wide Soil-Till Program with the goal of adding new regional targets



**DRYDEN**

GOLD CORP





# DRYDEN

## GOLD CORP

TSXV: DRY | OTCQB: DRYGF | FSE: X7W  
DRYDENGOLD.COM

**Contact:**

**Trey Wasser** CEO & Director  
+1 (940) 368-8337  
[twasser@drydengold.com](mailto:twasser@drydengold.com)

**Maura Kolb** President & QP  
+1 (807) 632-2368  
[mjkolb@drydengold.com](mailto:mjkolb@drydengold.com)

[ir@scorpiogold.com](mailto:ir@scorpiogold.com)

