



DRYDEN

GOLD CORP

TSXV: **DRY** | OTCQB: **DRYGF** | FSE: **X7W**
drydengold.com

JANUARY 2026

Acknowledgements & Forward-Looking Statements

Dryden Gold Corp acknowledges all Indigenous Peoples and that it is operating on the traditional homelands of the Wabigoon Lake Ojibway Nation and Eagle Lake First Nation.

Certain statements contained herein constitute “forward-looking statements” within the meaning of the applicable Canadian securities legislation. These forward-looking statements are based on current expectations, estimates and projections about the Canadian mining and mineral exploration industry based on management’s beliefs and certain assumptions made by management. Readers are cautioned that such forward-looking statements are not guarantees of future performance and are subject to risks, uncertainties and assumptions that are difficult to predict, and the actual results and performance of Dryden Gold Corp. (the “Company”) may differ materially from the results implied by such statements. Readers are cautioned not to place undue reliance on any forward-looking statements. Unless otherwise required by law, the Company also disclaims any obligation to update its view of any such risks or uncertainties or to announce publicly the result of any revisions to the forward-looking statements made here.

This document contains proprietary information that is the property of Dryden Gold Corp. Neither this document, nor the proprietary information contained herein, shall be published, reproduced, copied, disclosed or used for any other purpose, other than the review and consideration of this document.

This presentation is not an offer, nor the solicitation of an offer to buy any securities. Such an offer, if made, will be made only through a prospectus or other such document issued in accordance with applicable securities laws, and other applicable laws, rules and regulations., Or pursuant to the applicable exemption from the requirement to deliver a prospectus, in accordance with applicable laws.

Historical statements contained in this document regarding past activities should not be taken as a representation that such trends or activities will continue in the future. In particular, historical results should not be taken as a representation that such trends will be replicated in the future. No statement in this document is intended to be nor may be construed as a profit forecast.

An investment in the Company is speculative and involves substantial risk and is only suitable for investors that understand the potential consequences and are able to bear the risk of losing their entire investment. Investors should consult with their own legal, tax and financial advisors with respect to all such risks before making an investment.

The Company is in the early stage of development and has a limited operational history, making it difficult to accurately predict business operations. The Company has limited resources and may run out of capital prior to becoming profitable. The Company may fail and investors may lose their entire investment.

The technical disclosure in this presentation has been approved by Maura J. Kolb, M.Sc., P.Geo. a Qualified Person as defined by National Instrument 43-101 of the Canadian Securities Administrators.



Key Value Drivers



Experienced Management

History of success in building junior mining companies and navigating M&A to create shareholder value

Technical team has extensive regional experience leading the exploration team at the Red Lake Mine



Investment Upside

High-grade gold across the entire Dryden District

Limited historic drilling – 30,000 meters

System has never been drilled tested at depth

Regional Greenfield targets at Hyndman & Sherridon

Strategic investment from Centerra Gold



Favorable Mining Jurisdiction

Excellent infrastructure, including grid power

Major highway access and logging roads

Year-round drilling

Significant tax benefits and government grants

Collaborative relationships with First Nations communities

Trey Wasser	Maura Kolb	Scott Kelly	Anna Hicken	Jason Jessup	Christina McCarthy	Darin Wagner	Stephen Kenwood	Gary Baschuk	Ben Frieman
CEO Director	President	CFO Director	VPX	Independent Director	Independent Director	Advisor	Advisor	Advisor	Advisor

MAJOR SHAREHOLDERS



- Management & Insiders 5.77%
- Alamos Gold (NYSE-AGI) 10.79%
- Centerra Gold Inc. 9.01%
- EuroPac Gold Fund 5.79%
- Medalist Capital 3.20%
- Sprott Asset Management 1.95%
- Delbrook Capital 11.05%
- Eric Sprott 1.88%
- Rob McEwen 1.56%
- Dynamic Funds 2.13%
- Robert Quartermain 0.47%
- Other Institutions 12.00%
- Public Float 34.38%

SHARE STRUCTURE

as at December 31, 2025

Trading Symbols	TSXV: DRY OTCQB: DRYGF FSE: X7W
Current Issued and Outstanding	213,134,590
Warrants Outstanding	13,108,756
ESOP Options Outstanding	9,400,000
Fully Diluted	235,643,346
Cash Balance	\$9,350,000

NEWSLETTER WRITER COVERAGE

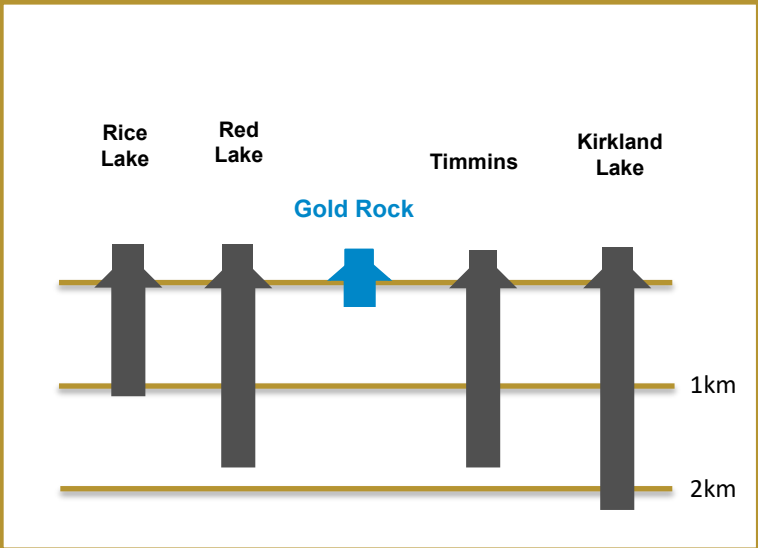
JEFF CLARK The Gold Advisor	BRIEN LUNDIN The Gold Newsletter	CHEN LIN Chen's Stock Picks
--	---	--

ANALYST COVERAGE

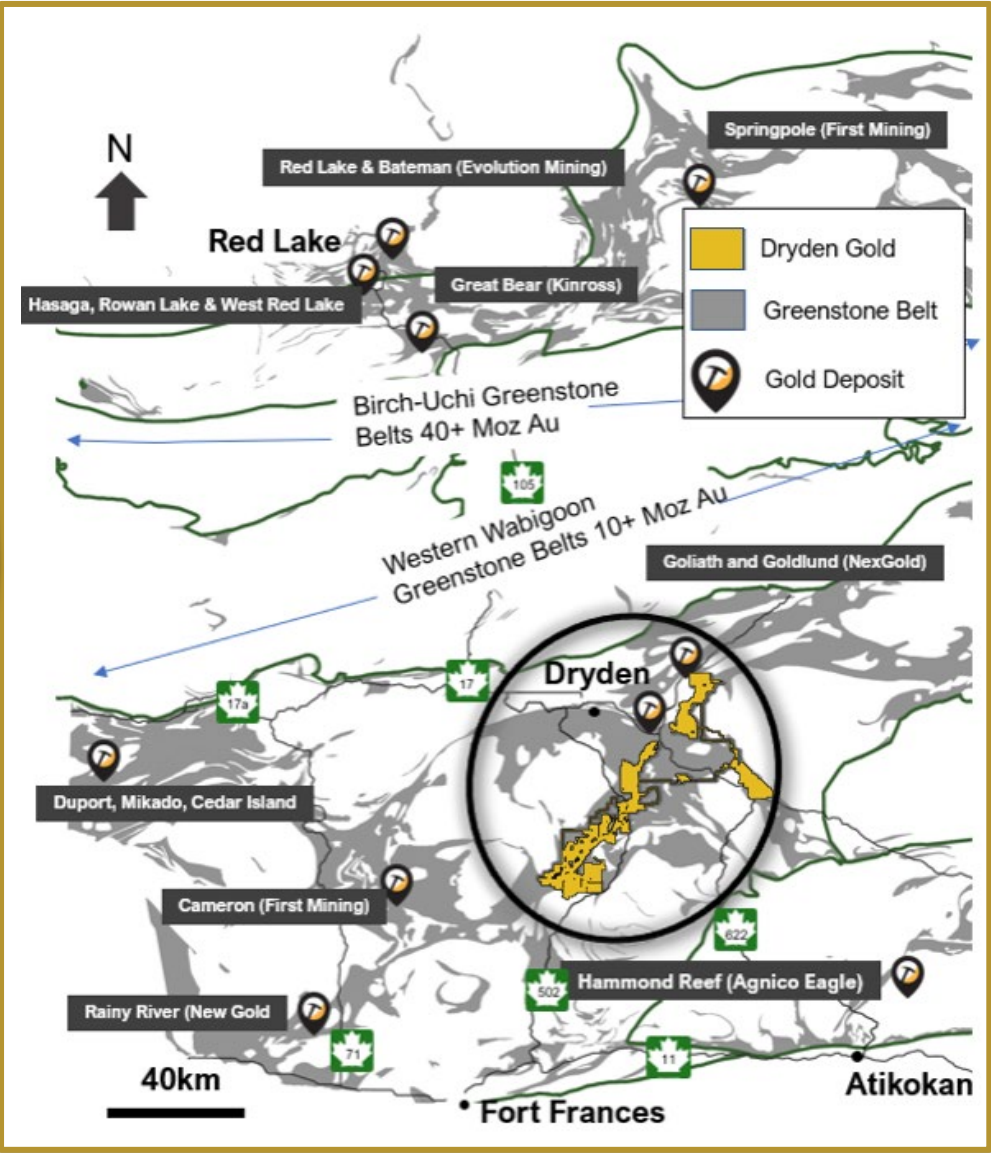
CLARUS SECURITIES Varun Arora	SCP CAPITAL Brandon Gaspar	COULOIR CAPITAL Ron Wortel	KPG WEALTH Pranta Sen Gupta	Independent Mining Analyst Eric Lemieux, M.Sc. P. Geo.
----------------------------------	-------------------------------	-------------------------------	--------------------------------	---

Prolific Gold Region | An Under Explored District

Archean Lode Gold Mines Camps Central Canada



Limited exploration & historic mining district-wide at only shallow depths

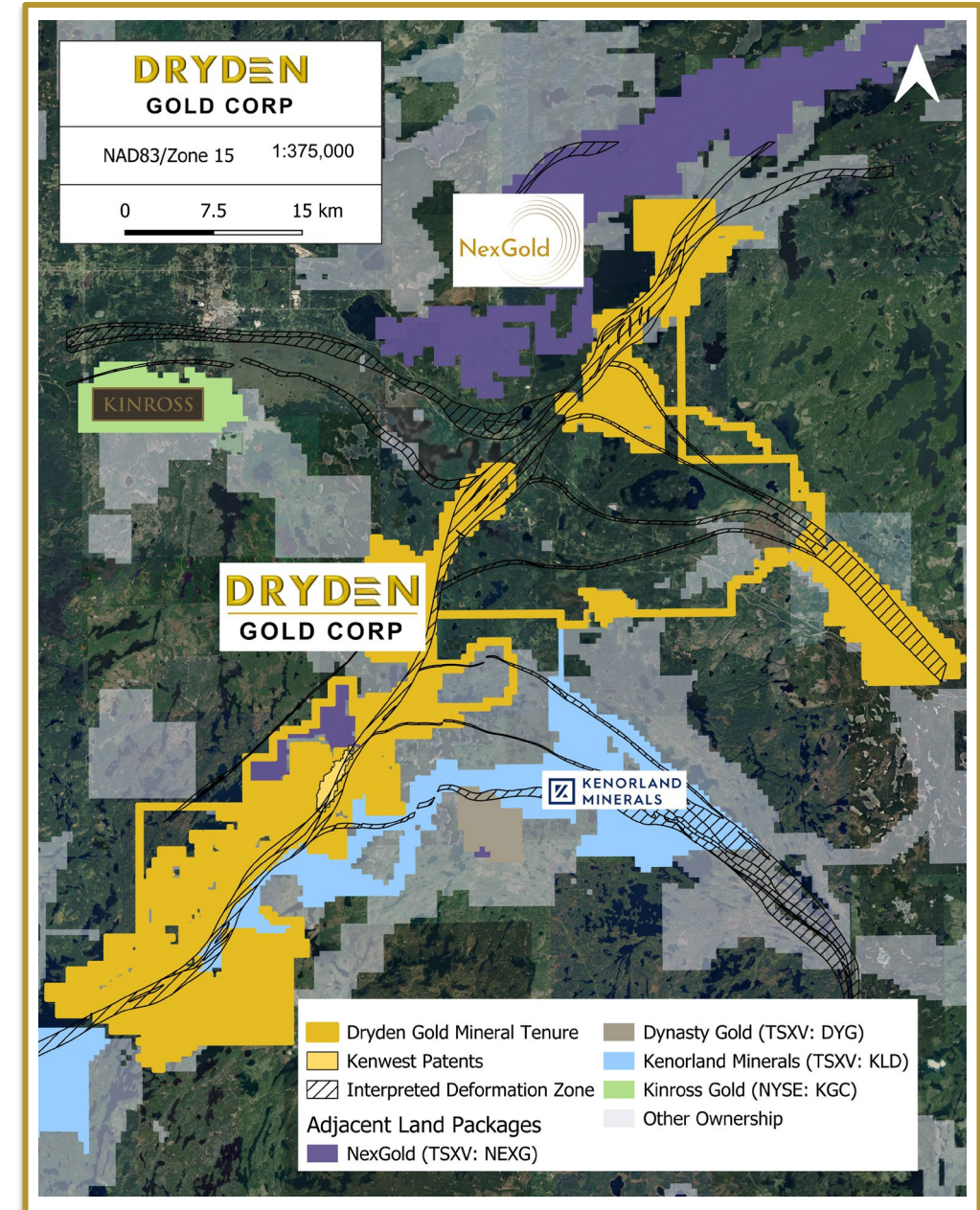


Strategic Land Package

- ▲ Over 702 km² (70,250 hectares) consolidated & 100% owned by Dryden Gold Corp.
- ▲ Excellent infrastructure – Roads, power & labor
- ▲ 50 km strike covering regional gold bearing MDdz structure (Manitou-Dinorwic deformation zone)
- ▲ Two additional cross-cutting regional gold-bearing fault structures

Strategic Exploration Method

- ▶ All oriented drill core to enhance structural interpretation
- ▶ Fully assayed drill core to define stacked structures in different host rocks
- ▶ Smaller drill passes, integrating new data for each phase insuring geological & structural controls go into targeting
- ▶ Year-round drilling at industry low cost of \$250/m (all in)



District Scale High-Grade Gold | Fully Funded for 2026

Gold Rock Camp Drill Highlights

- ▲ 301.67 g/t gold over 3.90 meters
including 1,930.00 g/t over 0.60 meters
- ▲ 55.34 g/t gold over 3.50 meters
- ▲ 3,497.0 g/t gold over 8.50 meters *historic drill hole* including 53,700 g/t gold over 0.55 meters

Hyndman Field Samples

- ▲ 34.80 g/t gold grab sample 2024
- ▲ 13.00 g/t gold grab sample 2023

Hyndman Channel Samples

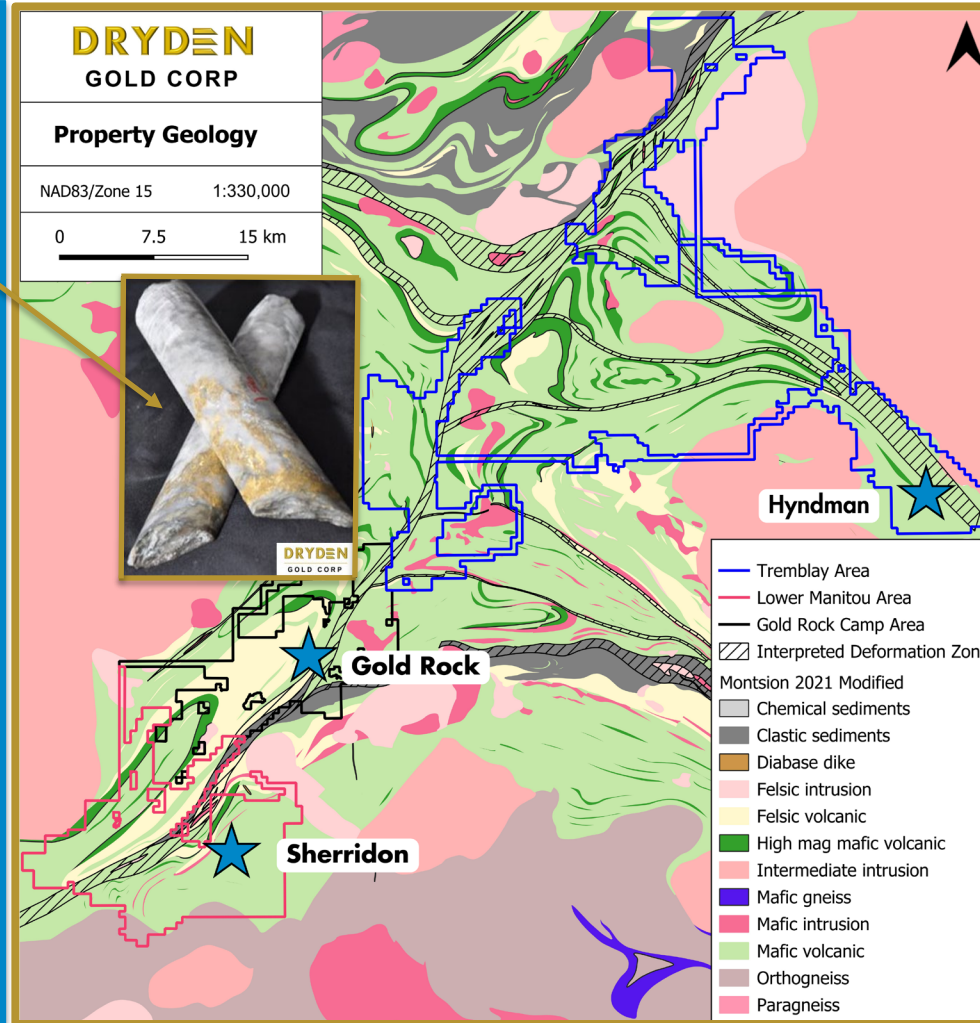
- ▲ 23.32 g/t Au over 2.80 m
incl. 24.79 g/t Au over 1.50 m
incl. 36.90 g/t Au over 0.70 m

Sherridon Field Samples

- ▲ 617.00 g/t gold grab sample (historic)
- ▲ 184.50 g/t gold grab sample (historic)

Sherridon Drill Highlights

- ▲ 1.28 g/t gold over 19.00 meters
including 36.40 g/t over 0.50 meters



Two-Prong Exploration Plan

Gold Rock Camp - Our Flagship

- ▲ Fully Defining the Structures and Controls of High-Grade Gold
- ▲ Deeper Drilling
- ▲ Proving the Periodicity
- ▲ Developing Multiple Target Areas in the Gold Rock Camp (20 km)

Regional Discoveries

Hyndman

- ▲ DRY's First Regional Discovery
- ▲ Potential 4-4km Strike
- ▲ Channel Samples Generate Drill Test

Sherridon

- ▲ First Pass Drilling & Re-Logging
- ▲ Defining Broad Mineralized Zones
- ▲ New Structural Interpretation
- ▲ Planning Follow-up Drilling

DRYDEN

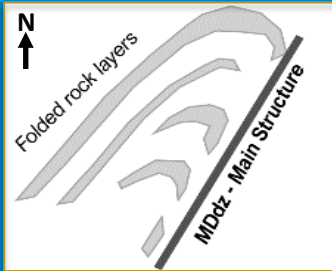
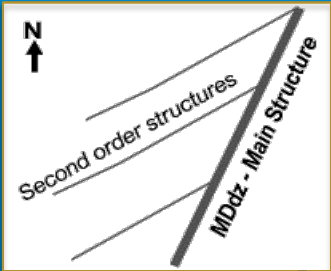
GOLD CORP

TSXV: **DRY** | OTCQB: **DRYGF** | FSE: **X7W** DRYDENGOLD.COM

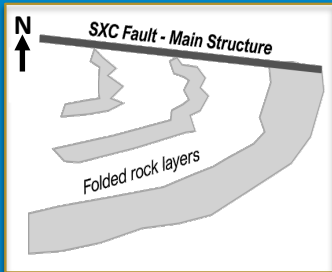
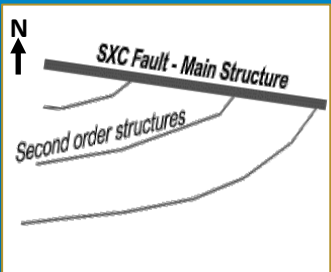
Gold Rock Camp

Similar Geological Setting to Red Lake

Dryden Gold Corp. Gold Rock Area Geology



Red Lake Mine Geology



Similar geological setting, rock types with regional folding and structural geometry

Favorable geological gold traps for high-grade gold

Various styles of gold mineralization

Quartz veins w/ free gold, shears hosting gold, disseminated sulfides

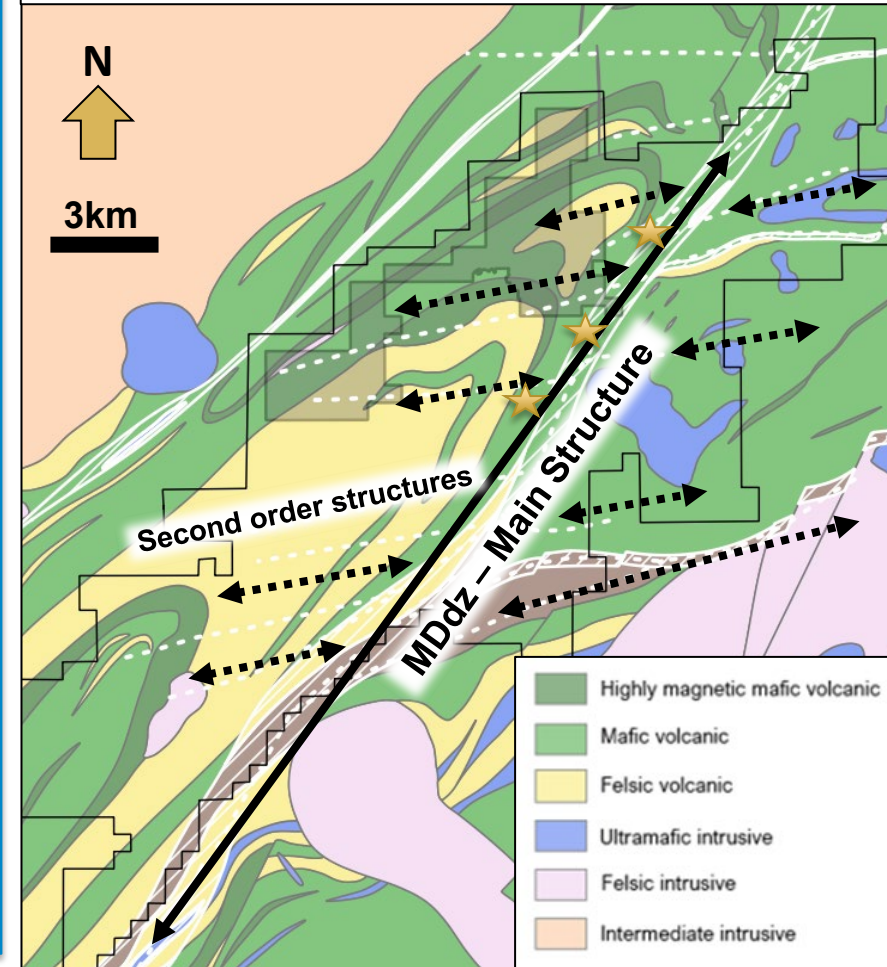
Very similar footprint at Red Lake and Gold Rock Camp

Stacked zones of mineralization in different structural planes at Red Lake & Gold Rock

Periodicity to these mineralized areas

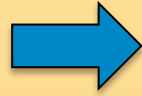
Red Lake discovered through mineralization outcropping on surface like Gold Rock Camp

Gold Rock Camp Geology

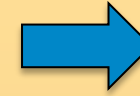


Gold Rock | Targeting High-Grade Structures

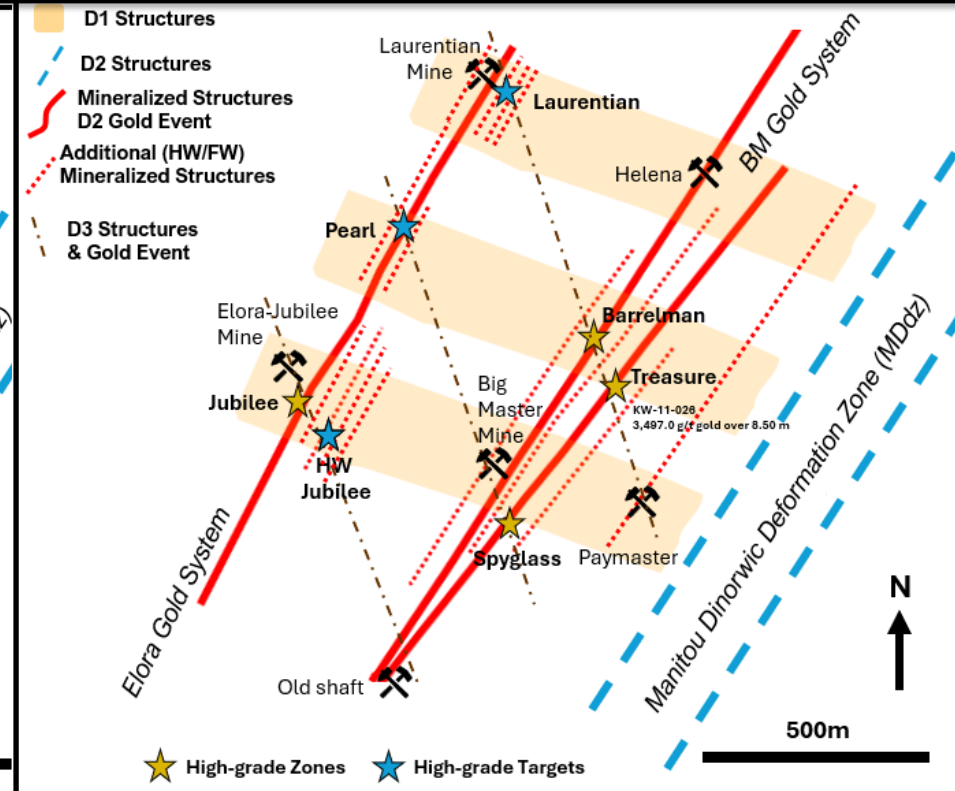
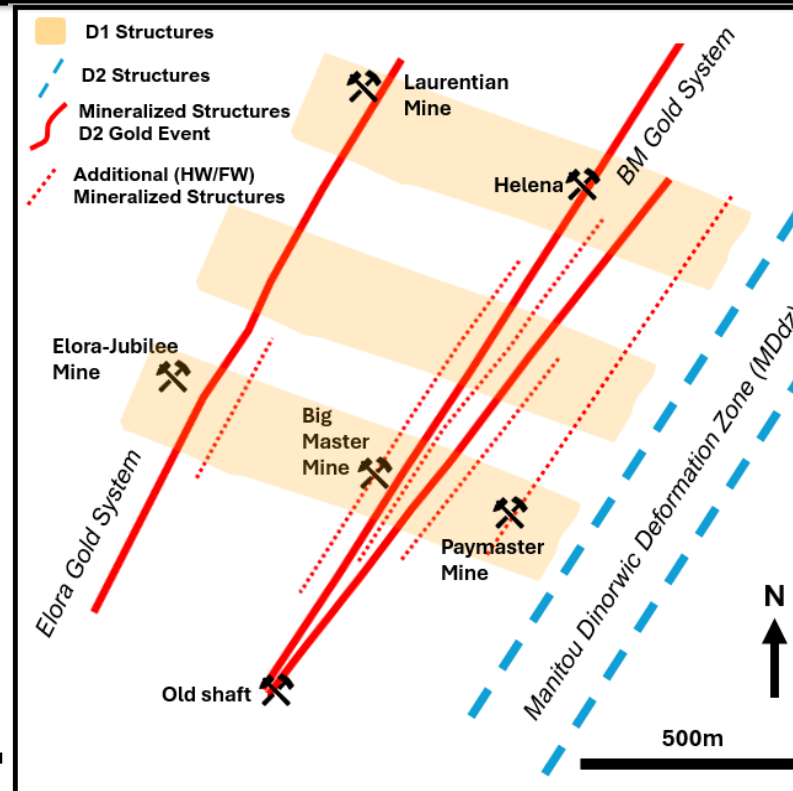
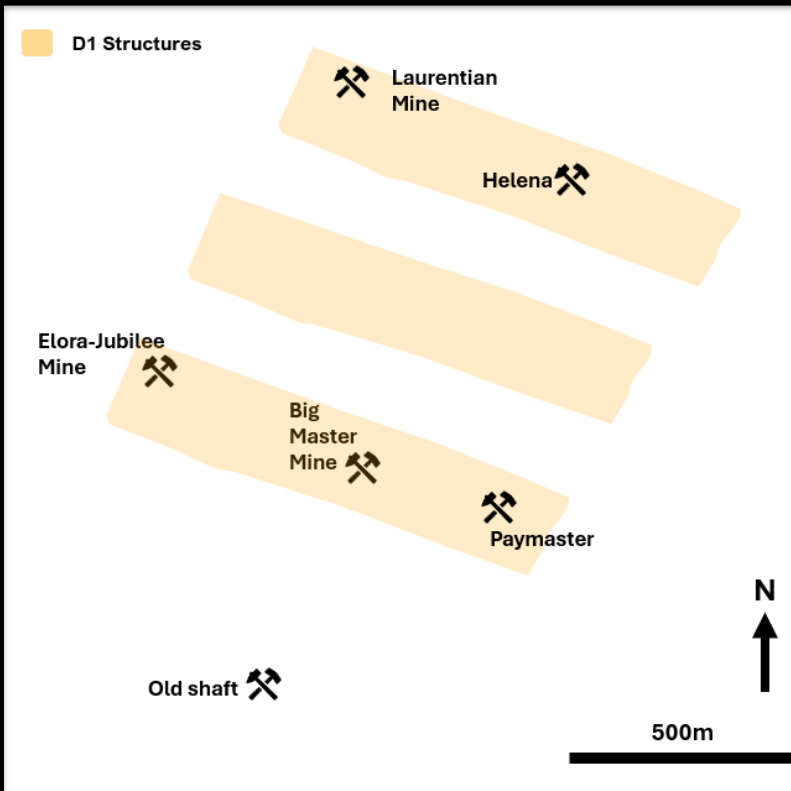
First Deformation Event



Second Deformation
& Gold Mineralization Event

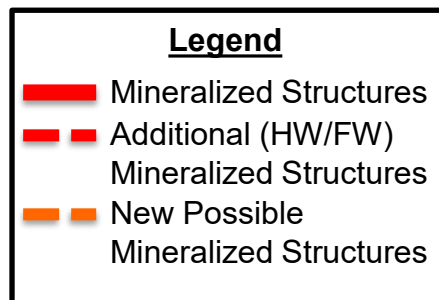


Third Deformation
& Gold Mineralization Event

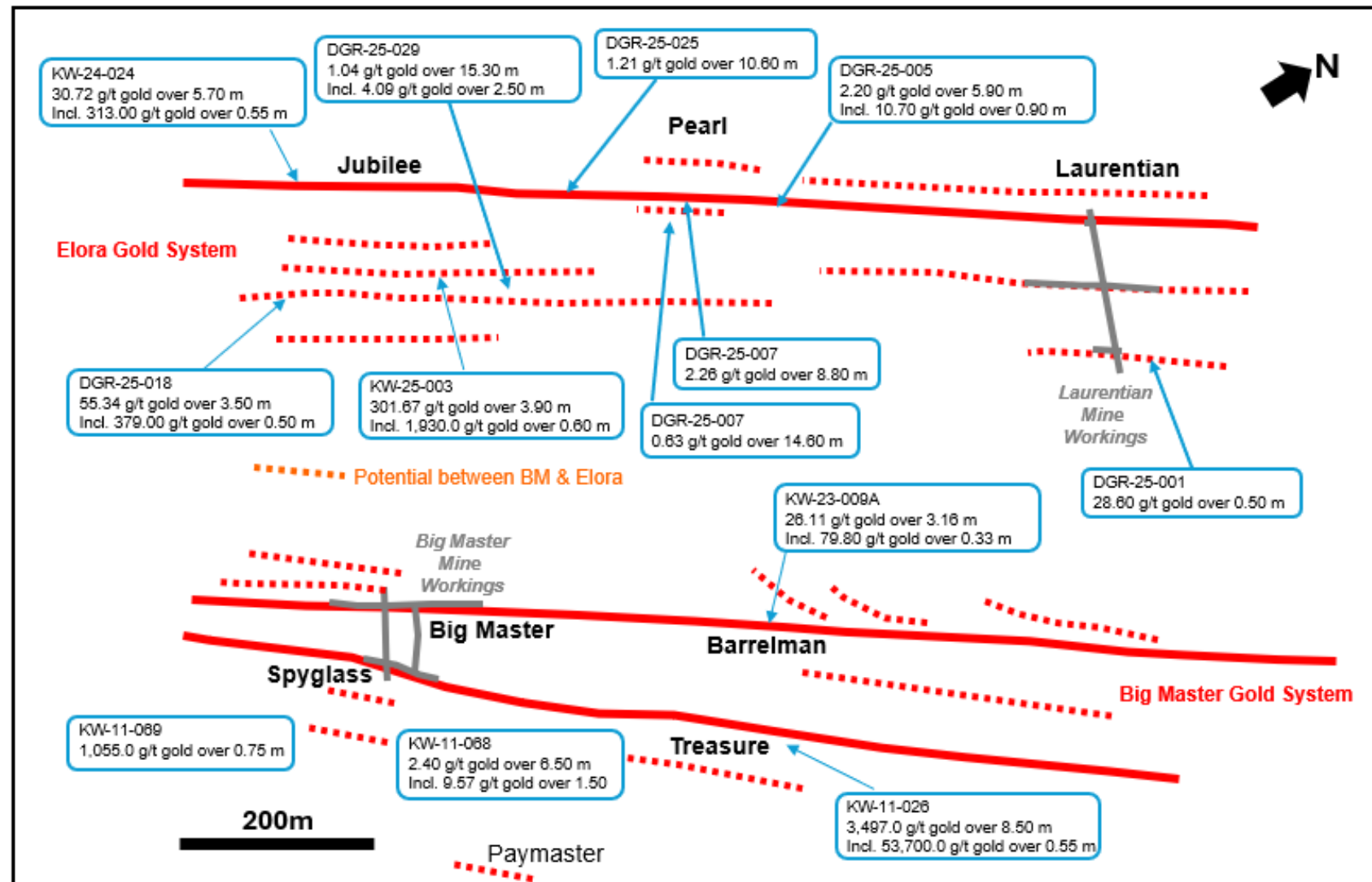


Note - figures are simplified schematic maps of the interpreted deformation and mineralization history

Gold Rock Target Area | Multiple Mineralized Structures



Scan for explanation videos:

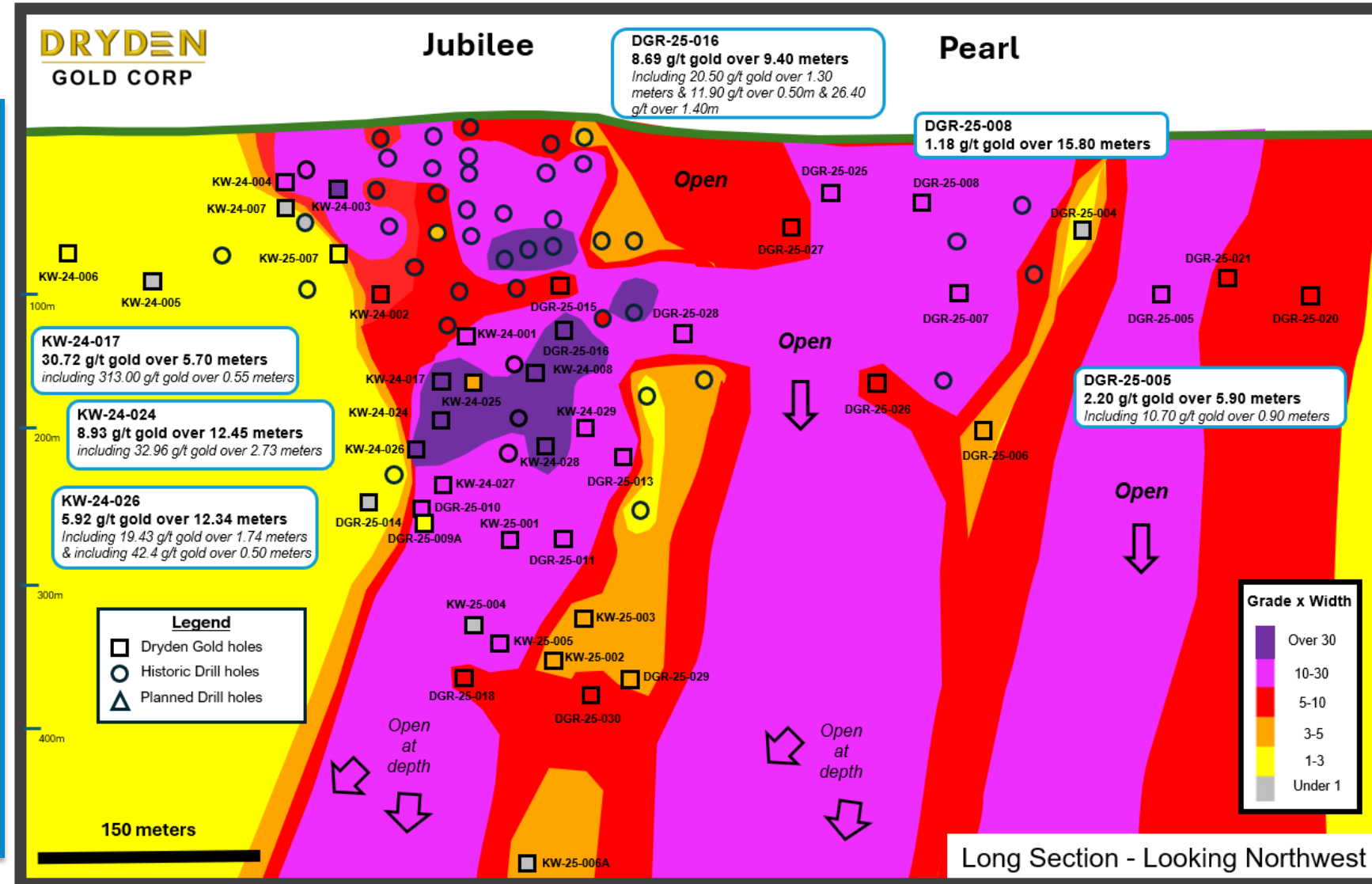


Elora Gold System | Elora Shear - Jubilee & Pearl Zones

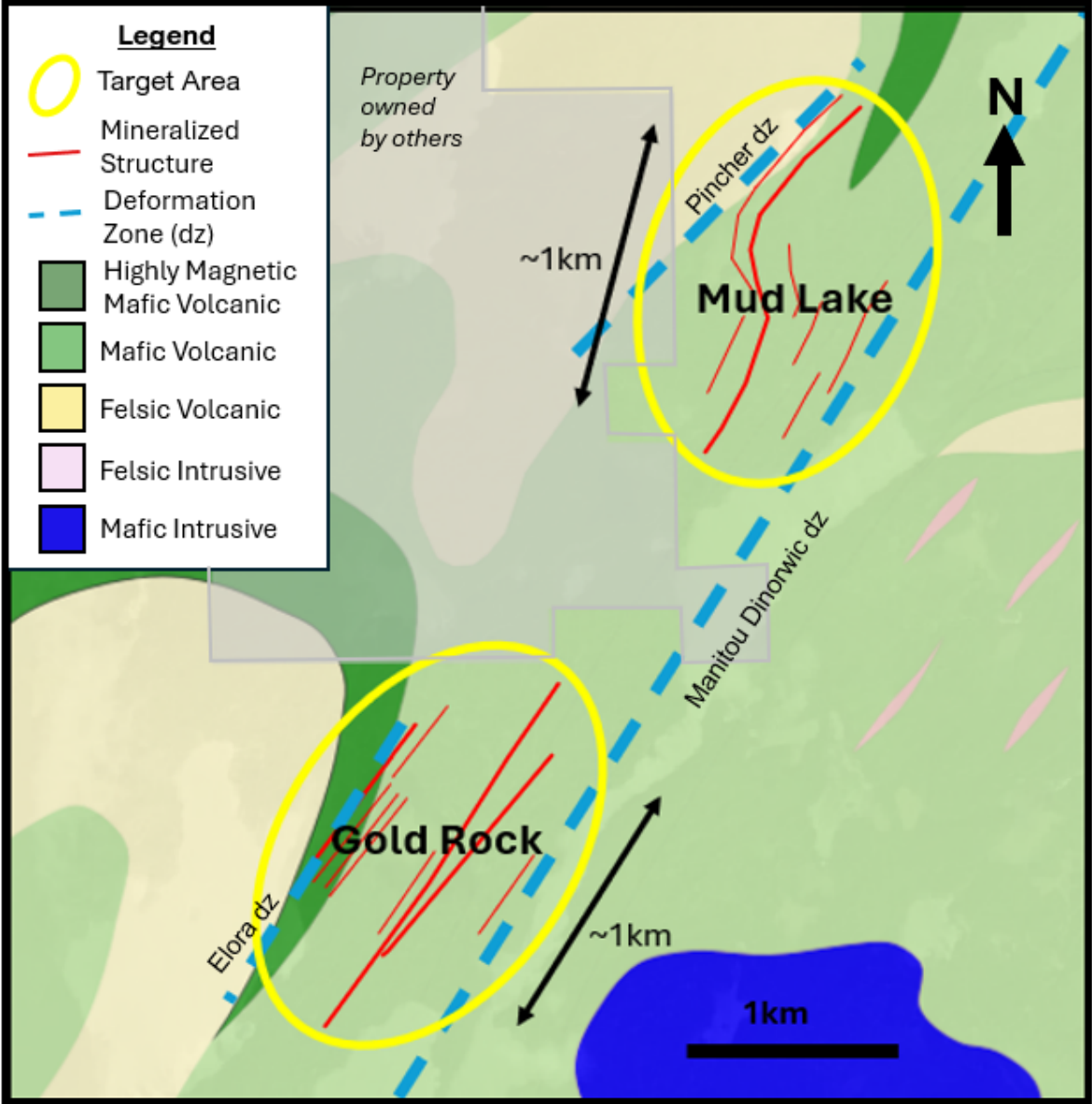
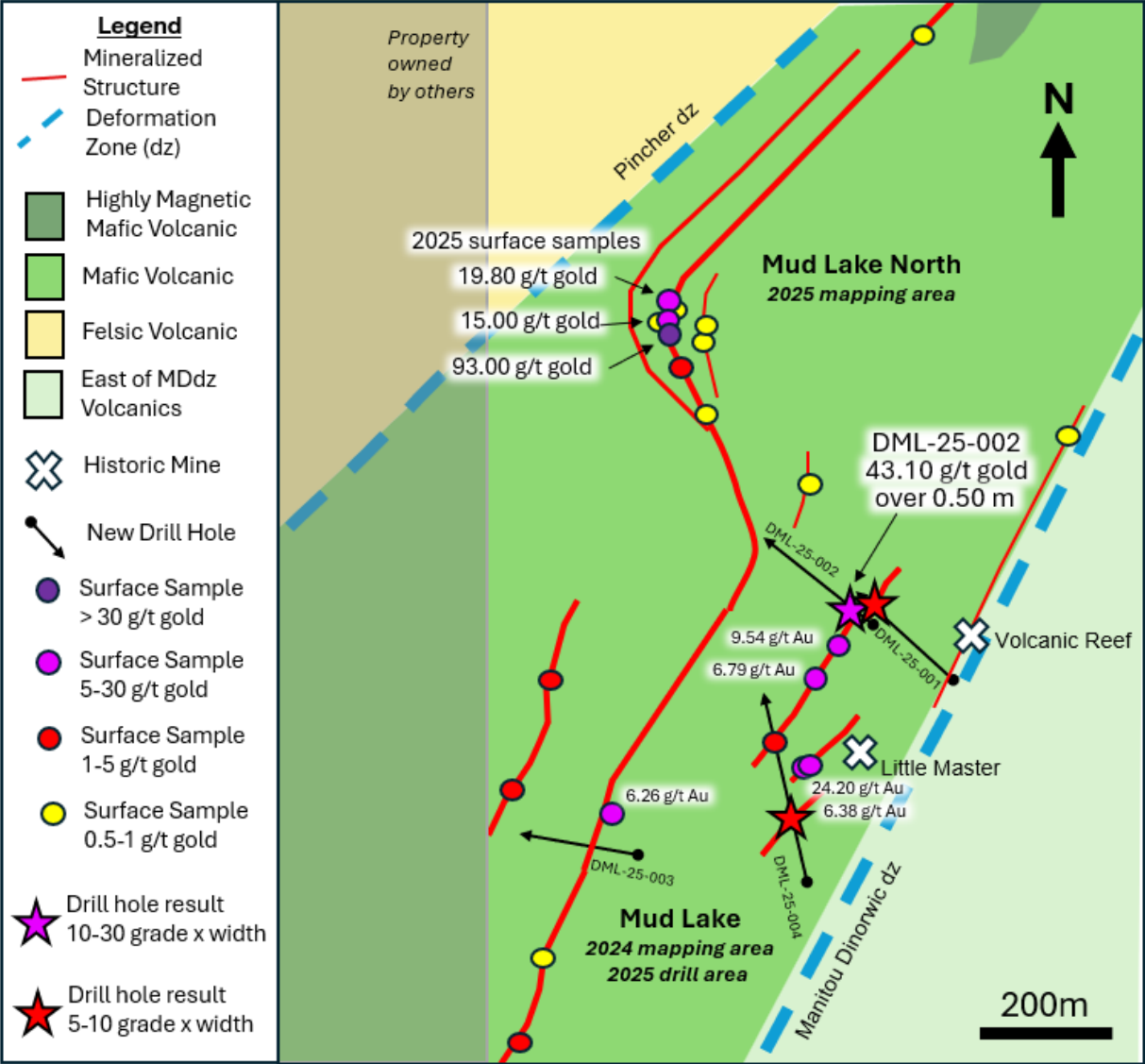
Expanding Strike & Depth



- Targeting sheared basalt with sulphide mineralization & quartz stringer veins
- Testing gold mineralization continuity down plunge and along strike

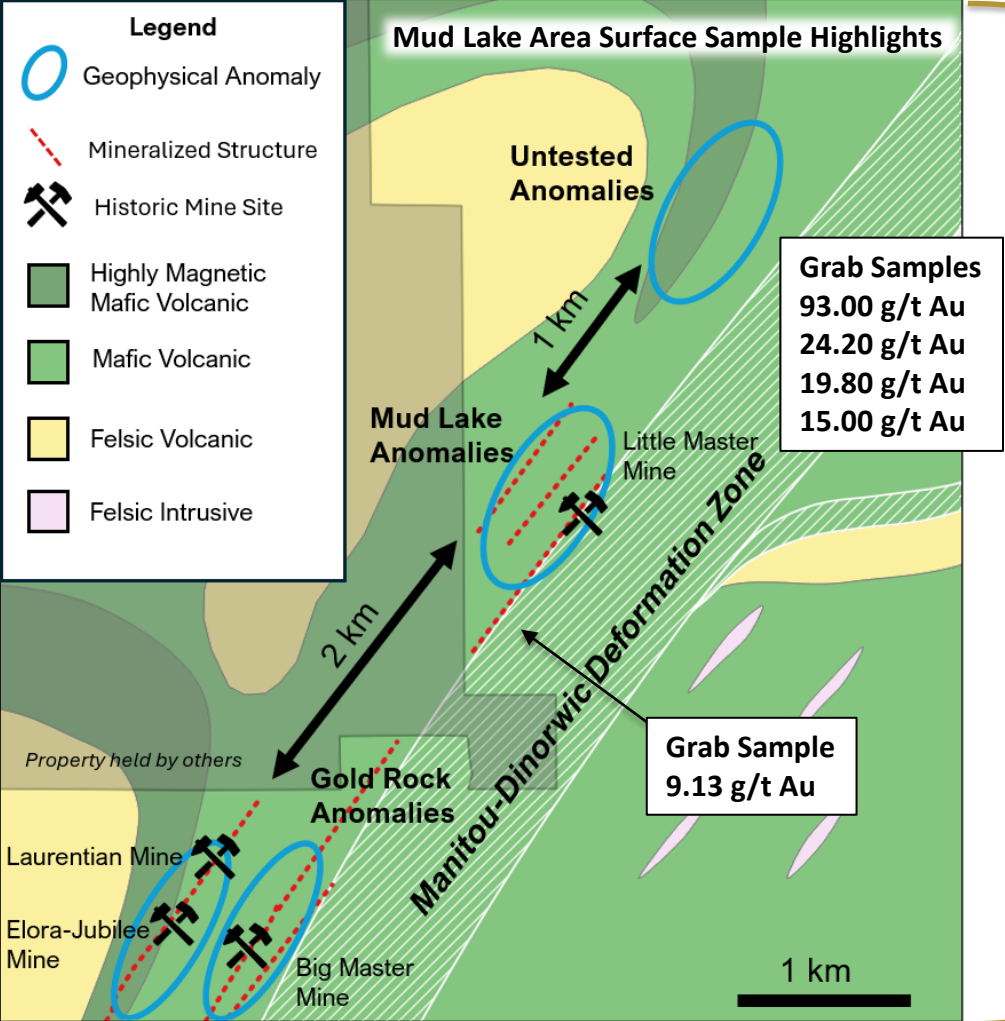


Gold Rock | Deposit Scale Periodicity | Mud Lake

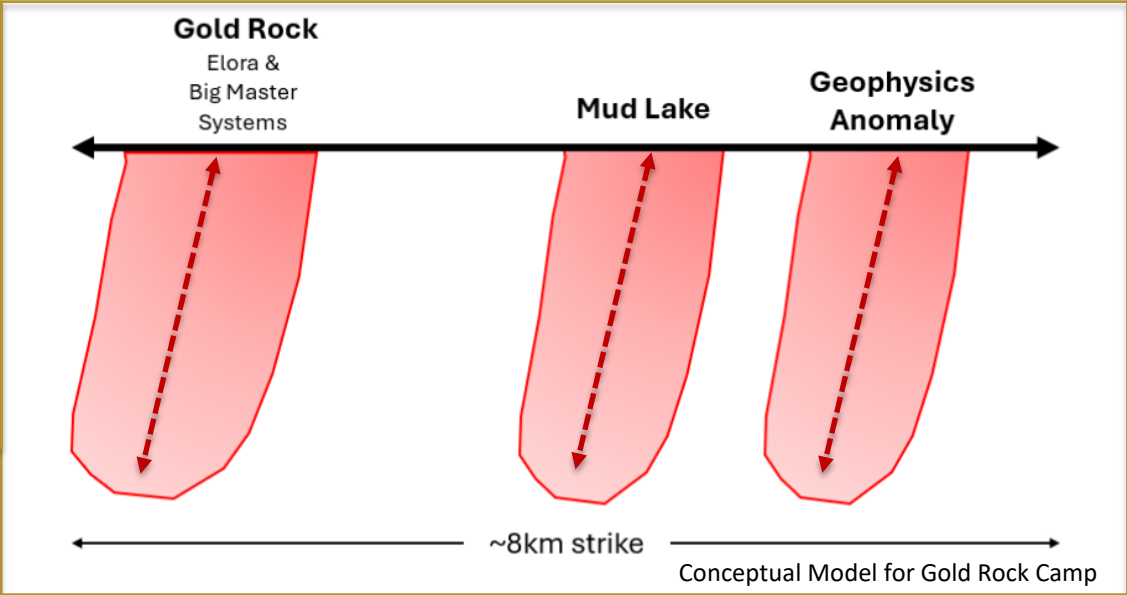


Gold Rock | Periodicity | Another Comparison to Red Lake

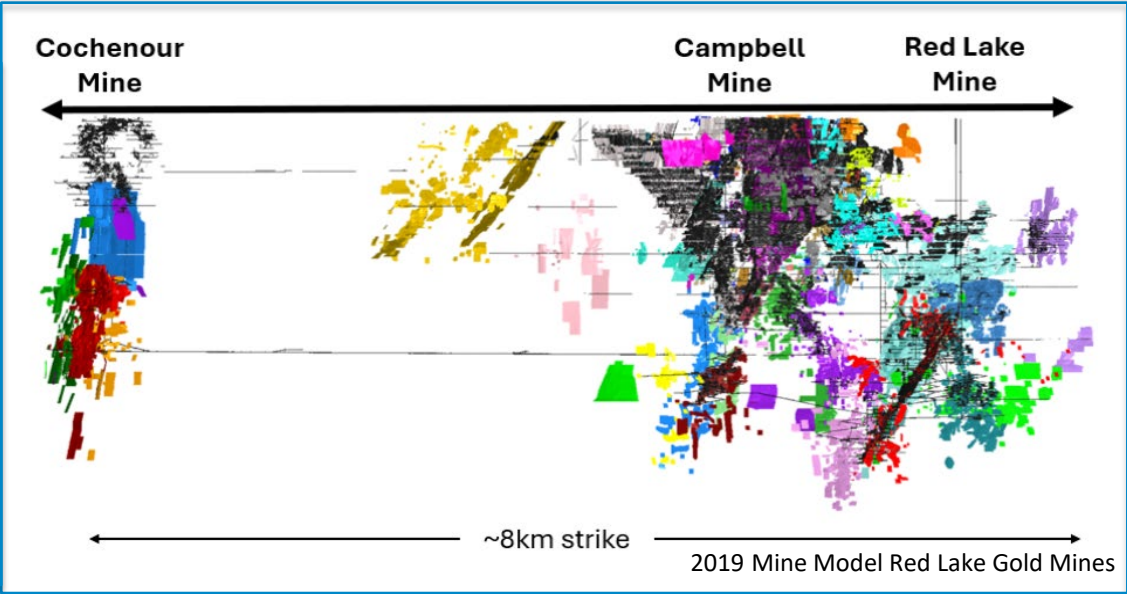
Gold Rock Trend Map - Gold Rock, Mud Lake Area and Untested



Long Section
from
Gold Rock
to
Mud Lake
to
Untested
Geophysics
Anomalies



Long Section
from
Red Lake
Mine
to
Campbell
Mine
To
Cochenour
Mine



Dryden Gold's Resource Pipeline

- 2025 Exploration Emphasis on **Gold Rock Camp** Targets - **Drill Permitted** for Northern Extensions
- Sherridon & Hyndman**- Two Regional Target Areas Identified and **Now Permitted** for Further Field Work & Drilling During 2025 Campaign

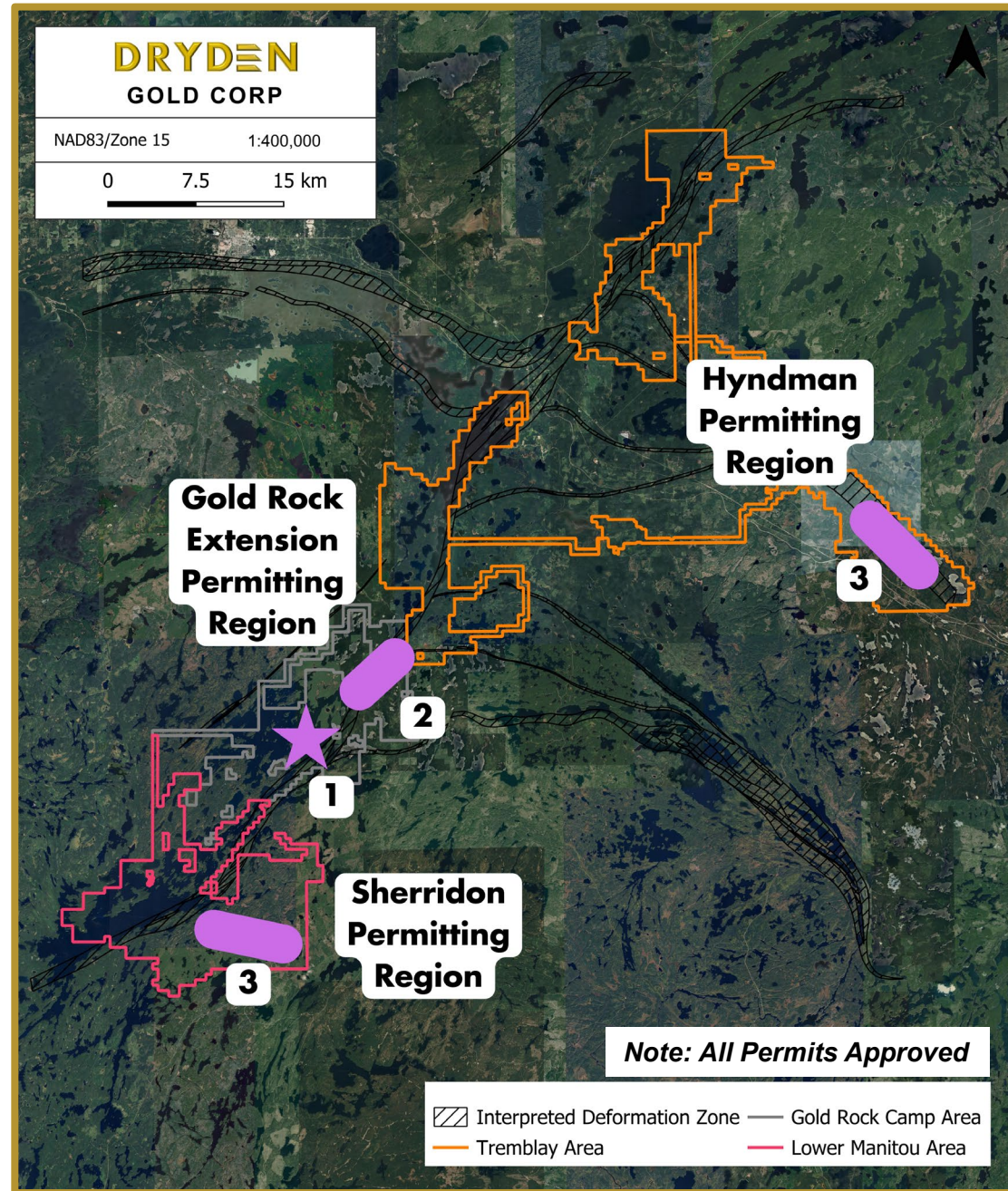
Regional (District) Target	Conceptual Target	Early-stage Target	Identified Target	Follow Up Target	Drill Ready Target	Early Resource Definition
Sandybeach MDdz	Snowfall Anomalies	Gold Rock West	Gold Rock East <i>Goldcliff</i>	Gold Rock North <i>untested anomalies</i>	Sherridon	Elora Gold System
Avery MDdz		Gold Rock Selby	Gold Rock South <i>Queen Alexandra</i>	Hyndman Untested Anomalies	Hyndman	Elora Extensions
Avery Wabigoon Splays		Gaffney Patents			Gold Rock North <i>Mud Lake</i>	Big Master Gold System
					Big Master Southern Extensions	
Conceptual		Grassroots		Brownfields		Resource



2025 Regional Exploration

Regional Exploration Targeting New Discoveries

- ▲ Highly **prospective** land package
- ▲ **Numerous** Regional targets
- ▲ Structural Synthesis – Tectonic Evolution
- ▲ **District Scale Potential**
- ▲ Multiple Deposit Models
 - ▲ **Sherridon** (Ultramafic Host)
 - ▲ **Hyndman** (Granodiorite Host)



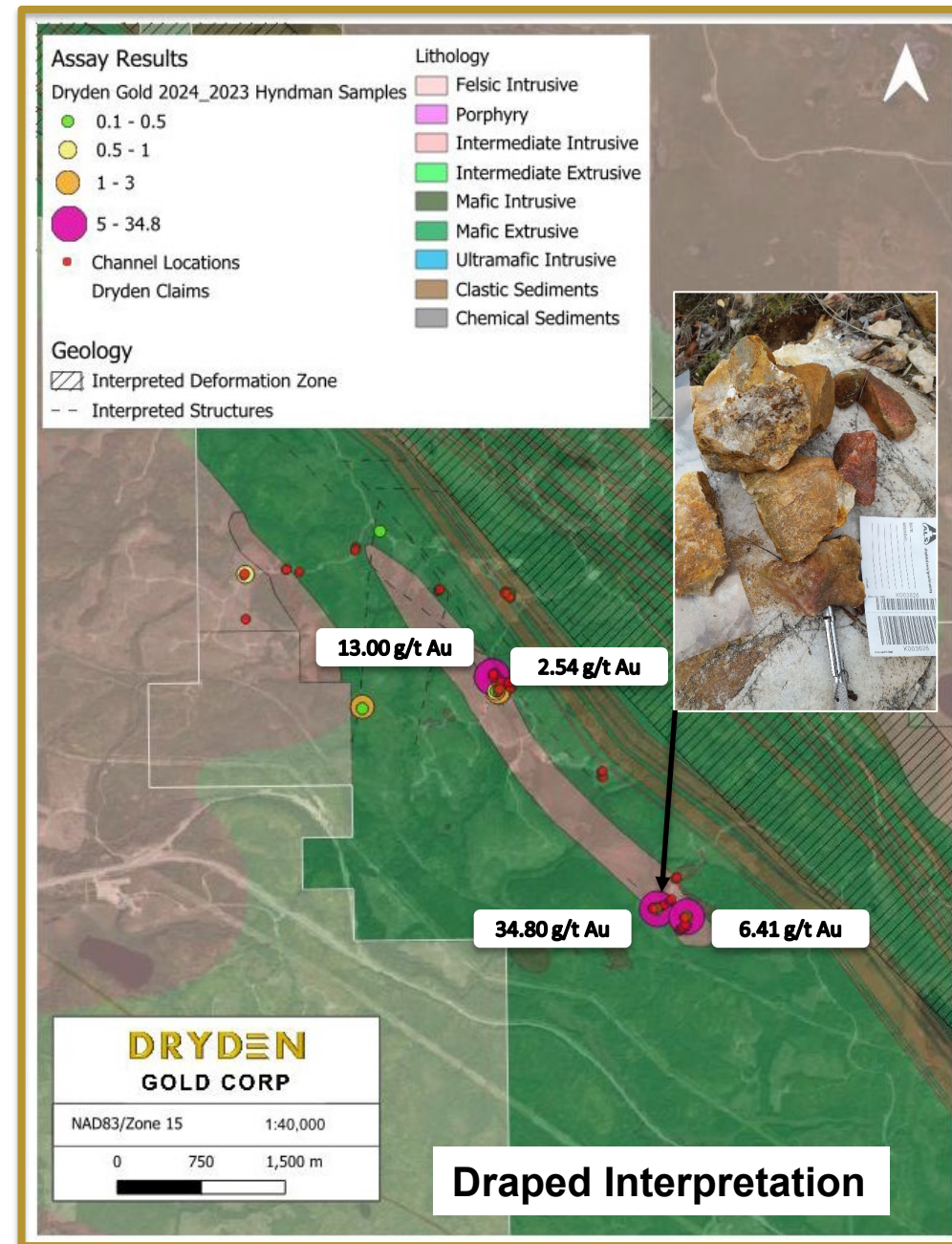
Hyndman | Regional Exploration

- Field programs in 2024 & 2023 discovered new gold showings with 19 samples returning gold values higher than 1.00 g/t gold and 6 samples returning grades over 5 g/t gold.

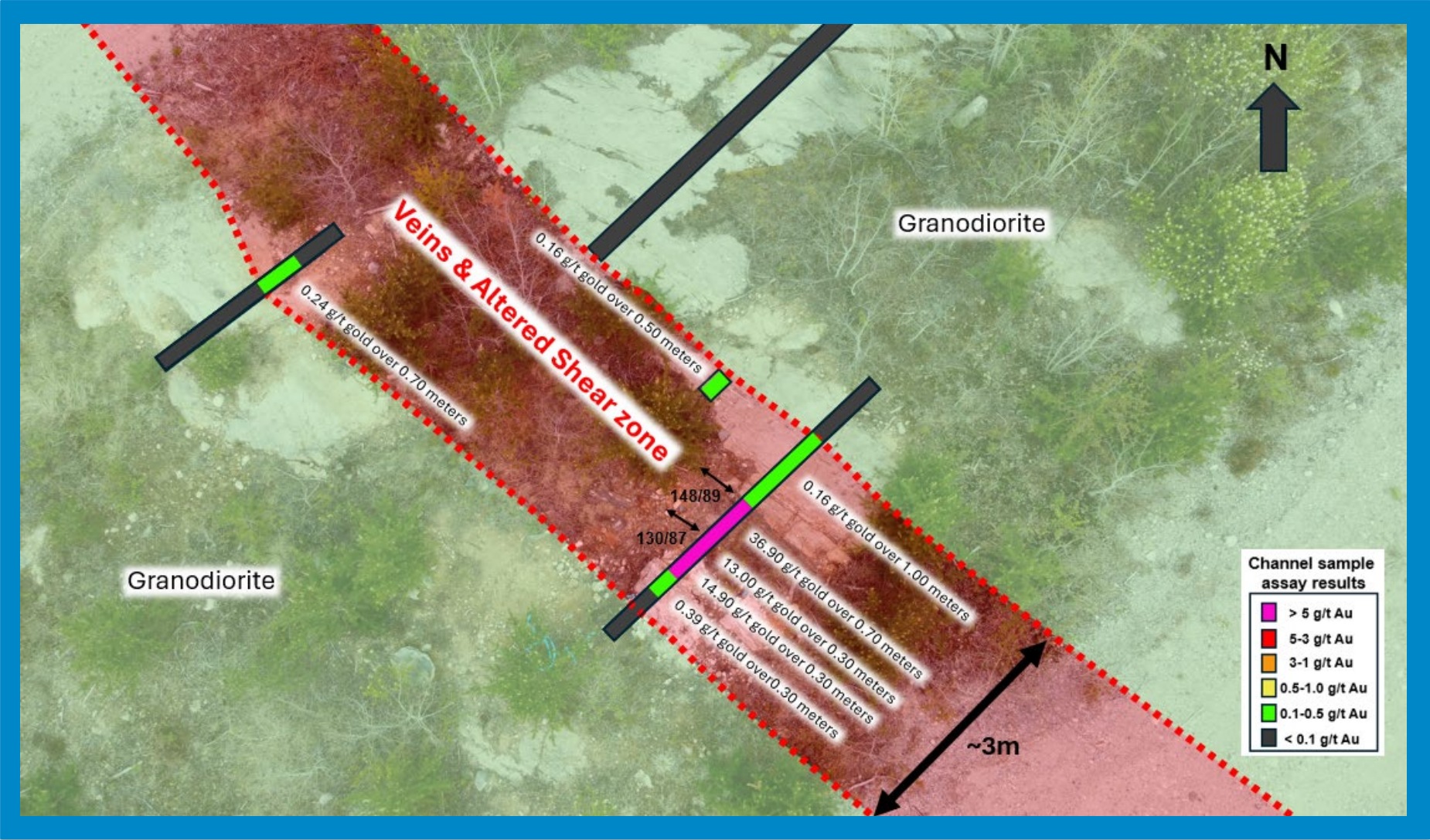
- Channel sample program from 2025 width of mineralization and sampled more difficult terrane to sample with traditional rock and hammer methods.
- 23.32 g/t gold over 2.80 meters**, incl. 24.79 g/t gold over 1.50 meters also incl. 36.90 g/t gold over 0.70 meters

- Soil and till sampling program across the property (including Hyndman) will help vector in on the full potential for additional gold-bearing targets.

DRYDEN
GOLD CORP



Hyndman | Channel Sample Results



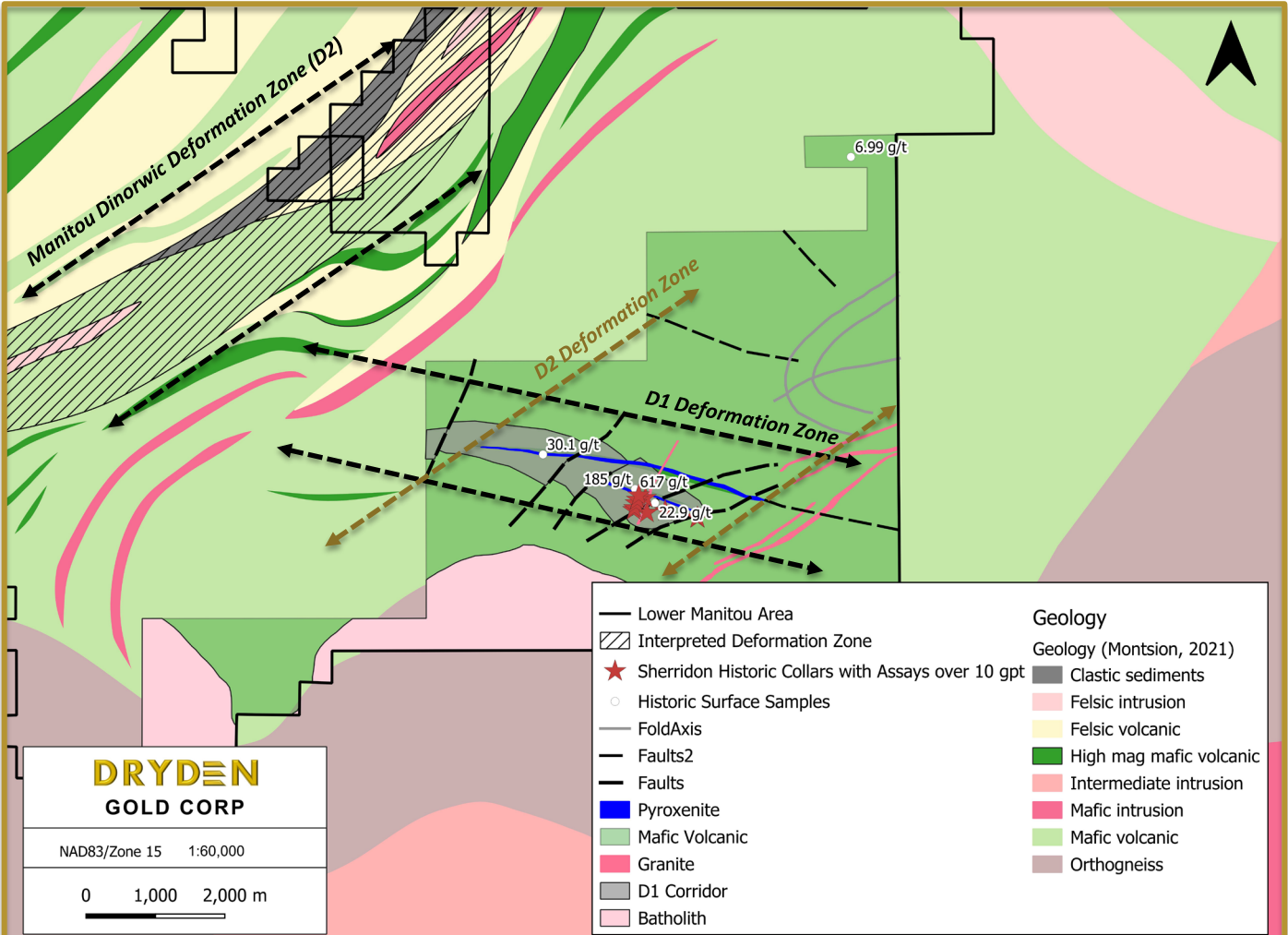
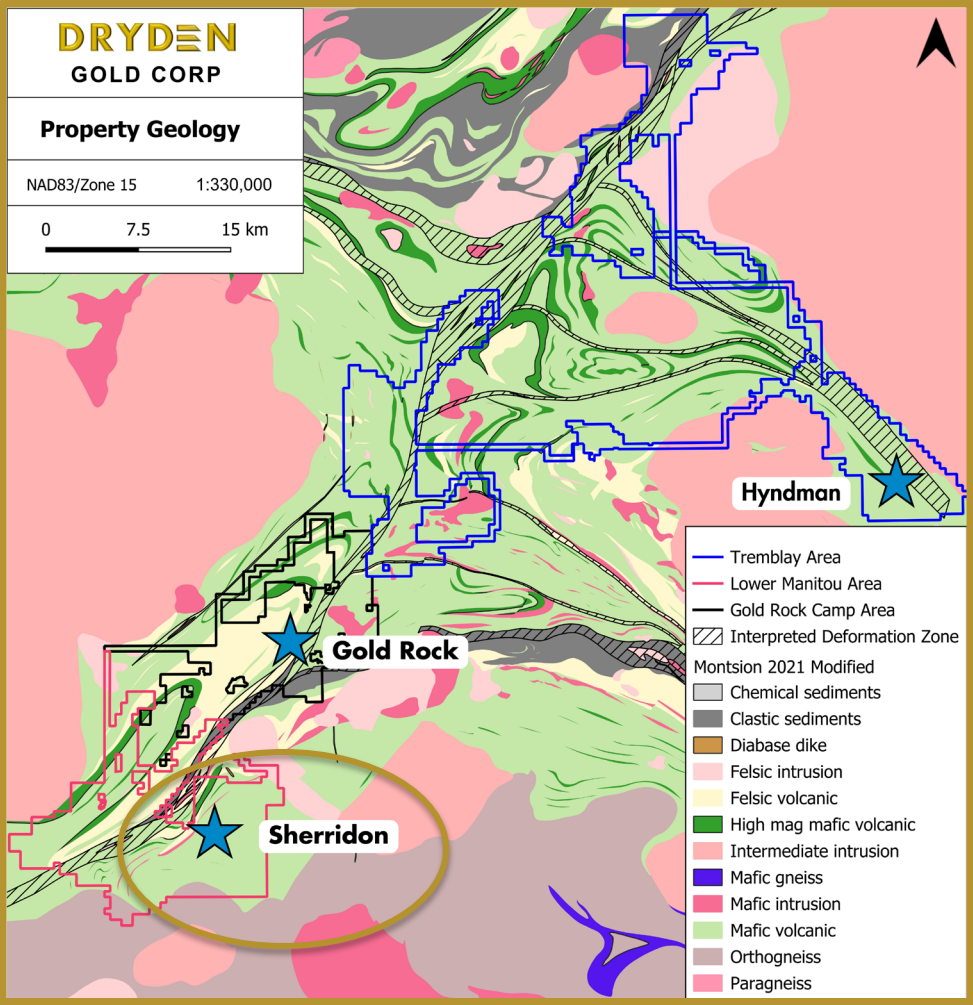
Highlights Hyndman Channel Program

23.32 g/t Au over 2.80 m
*incl. 24.79 g/t Au over 1.50 m
& incl. 36.90 g/t Au over 0.70 m*

Gold mineralization
hosted in
veining and shear zone

Potential for
4 km's of mineralization
based on trend of
granodiorite host

Sherridon | Regional Exploration



Mapping & geological modeling completed in 2024
Initial drill program completed in June 2025.

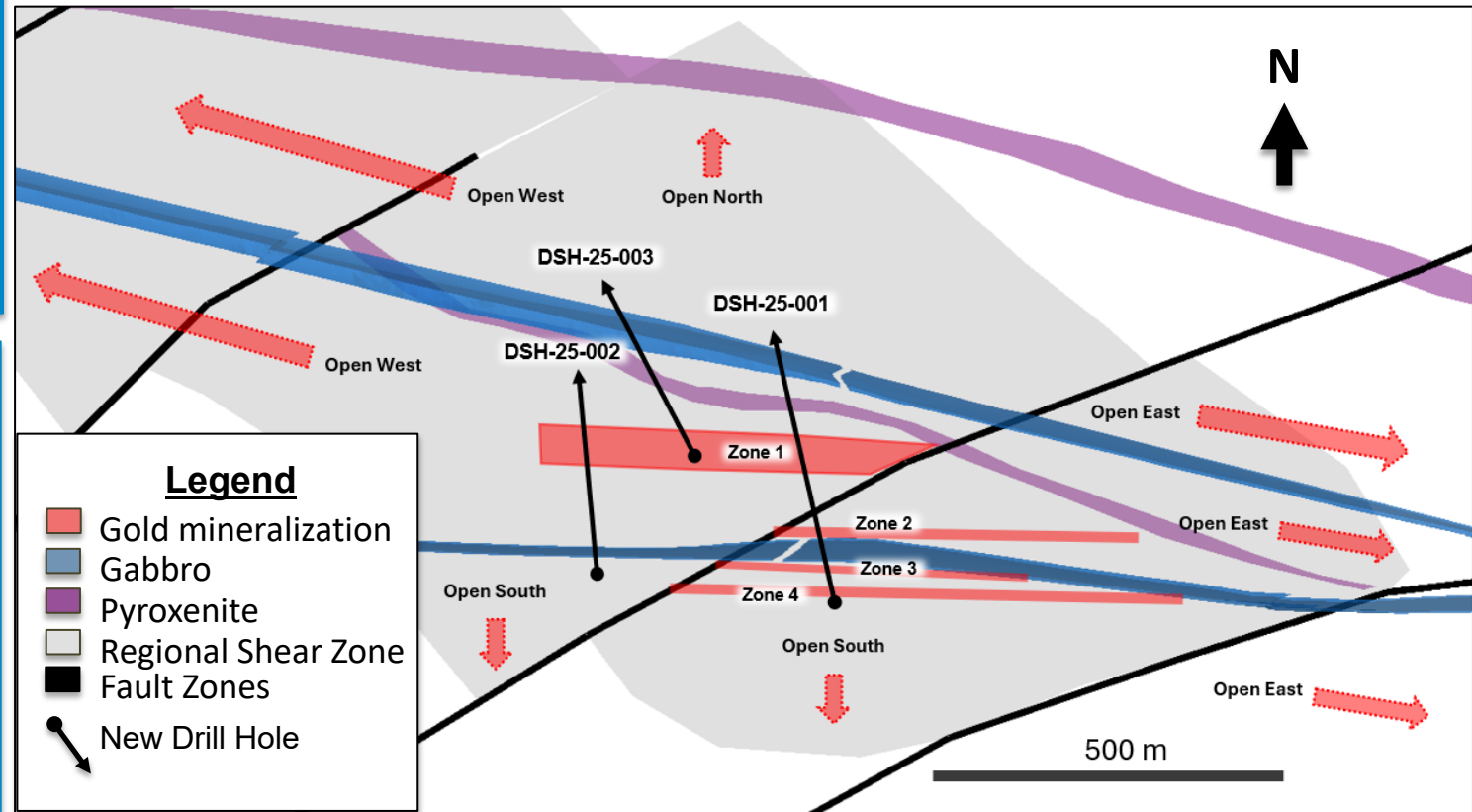
Sherridon | Regional Exploration

Assay Highlights:

- ▲ **617.00 g/t gold** surface sample
- ▲ Several surface samples over **100.00 g/t gold**

2025 Drill Highlights:

- ▲ DSH-25-001 intersected 1.28 g/t gold over 19.0 meters including 2.55 g/t gold over 9.00 meters and including 36.40 g/t gold over 0.50 meters in a broad wide mineralized structure
- ▲ DSH-25-001 intersected 0.40 g/t gold over 39.00 meters including 1.82 g/t gold over 7.00 meters in a second broad mineralized structure
- ▲ An extensive zone of anomalous gold mineralization of up to 136 meters intersected in all three holes



Mapping and drill holes at Sherridon have identified ultramafic dykes which are interpreted to indicate the presence of deeply-rooted structures capable of tapping fertilized upper mantle rocks. In addition, the target area is located just ~1km north of syn-tectonic granitic intrusions.

DRYDEN

GOLD CORP

Exploration Budget | Marketing

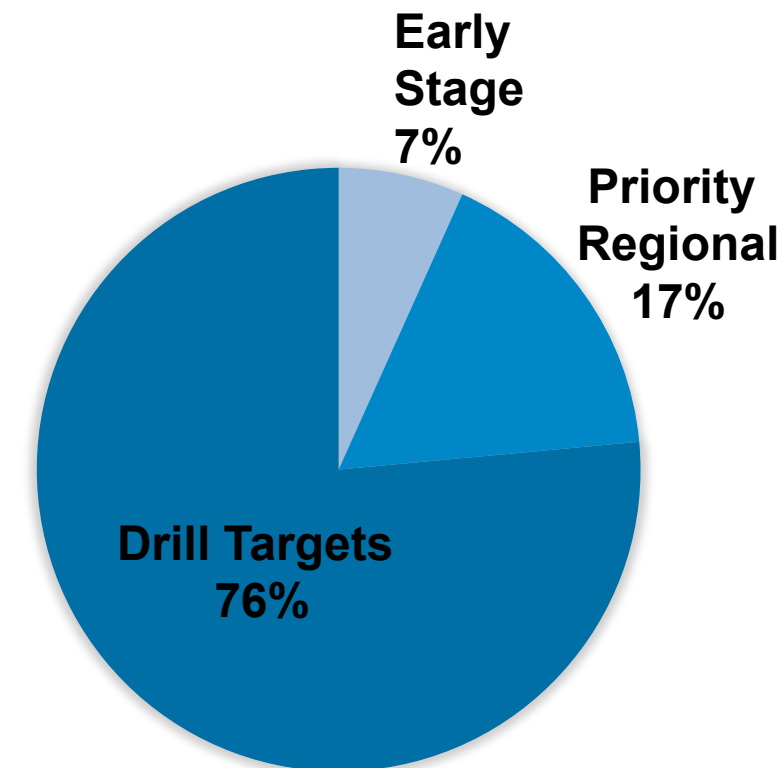
5.95M – 2026 Funded Exploration Budget (Current Financing)

Item	Property	Cost (\$CAD)
Mapping, Channels, Sampling & Other	Regional Targets <i>Sherridon, Gold Rock expanded, other</i>	\$650,000
Drilling	Drill Targets Gold Rock & Other	\$5,300,000

2026 Funded Exploration Budget 5.95 M will begin in Q4 2025

5.8M - 2025 Funded Exploration Budget (Previous Funds Raised)

Item	Property	Cost (\$CAD)
LiDAR & Till/Soil Geochemical Survey	Early Stage - All properties	\$800,000
Mapping, Channels, Sampling & Other	Priority Regional Targets <i>Sherridon, Gold Rock expanded, other</i>	\$850,000
Drilling	Gold Rock & Gold Rock Extension targets	\$3,350,000
Drilling	Priority Regional Targets <i>Gold Rock, Hyndman, Sherridon</i>	\$500,000



23,000+ Meters of Drilling in the 2026 Budget

Metals Investor Forum

Vancouver
January 23-24

AME Roundup Core Shack #1024

Vancouver
January 26-29

Vancouver Mining Exploration Group Luncheon

Vancouver
February 18

Metals Investment Forum

Toronto
February 27-28

PDAC 2026 Booth #2423A Core Shack #3106B

Toronto
March 1-2

Northwestern Ontario Prospectors Association

Thunder Bay
April 8-9

Capital Events Scottsdale

Scottsdale
April 10-12

Swiss Mining Institute

Panama
April 15-16

Top Shelf Florida Conference

Florida
May 20-22

THE Mining Event of the North

Quebec City
June 3-5

DRYDEN

GOLD CORP

TSXV: **DRY** | OTCQB: **DRYGF** | FSE: **X7W** DRYDENGOLD.COM | 19

Why Dryden Gold?

- ▲ The Property
- ▲ The Team
- ▲ The High-Grade Gold
- ▲ The Geology
- ▲ The Jurisdiction
- ▲ The Infrastructure
- ▲ The Shareholders
- ▲ The Funding

New 2026 Catalysts to Continue to Create Shareholder Value

- ▲ Continue to Grow Gold Rock Target Area & Test for periodicity on strike at the Gold Rock Camp (Mud Lake & Other targets)
- ▲ Drill Test Hyndman Discovery
- ▲ Further test Sherridon Regional Target
- ▲ Review Property Wide Soil-Till Program with the goal of adding new regional targets



DRYDEN

GOLD CORP

TSXV: **DRY** | OTCQB: **DRYGF** | FSE: **X7W** DRYDENGOLD.COM | 20



DRYDEN

GOLD CORP

TSXV: DRY | OTCQB: DRYGF | FSE: X7W
DRYDENGOLD.COM

Contact:

Trey Wasser CEO & Director
+1 (940) 368-8337
twasser@drydengold.com

Maura Kolb President & QP
+1 (807) 632-2368
mjkolb@drydengold.com

ir@scorpiogold.com

