



DRYDEN

GOLD CORP

TSXV: **DRY** | OTCQB: **DRYGF** | FSE: **X7W**
drydengold.com

OCTOBER 2025

Acknowledgements & Forward-Looking Statements

Dryden Gold Corp acknowledges all Indigenous Peoples and that it is operating on the traditional homelands of the Wabigoon Lake Ojibway Nation and Eagle Lake First Nation.

Certain statements contained herein constitute “forward-looking statements” within the meaning of the applicable Canadian securities legislation. These forward-looking statements are based on current expectations, estimates and projections about the Canadian mining and mineral exploration industry based on management’s beliefs and certain assumptions made by management. Readers are cautioned that such forward-looking statements are not guarantees of future performance and are subject to risks, uncertainties and assumptions that are difficult to predict, and the actual results and performance of Dryden Gold Corp. (the “Company”) may differ materially from the results implied by such statements. Readers are cautioned not to place undue reliance on any forward-looking statements. Unless otherwise required by law, the Company also disclaims any obligation to update its view of any such risks or uncertainties or to announce publicly the result of any revisions to the forward-looking statements made here.

This document contains proprietary information that is the property of Dryden Gold Corp. Neither this document, nor the proprietary information contained herein, shall be published, reproduced, copied, disclosed or used for any other purpose, other than the review and consideration of this document.

This presentation is not an offer, nor the solicitation of an offer to buy any securities. Such an offer, if made, will be made only through a prospectus or other such document issued in accordance with applicable securities laws, and other applicable laws, rules and regulations., Or pursuant to the applicable exemption from the requirement to deliver a prospectus, in accordance with applicable laws.

Historical statements contained in this document regarding past activities should not be taken as a representation that such trends or activities will continue in the future. In particular, historical results should not be taken as a representation that such trends will be replicated in the future. No statement in this document is intended to be nor may be construed as a profit forecast.

An investment in the Company is speculative and involves substantial risk and is only suitable for investors that understand the potential consequences and are able to bear the risk of losing their entire investment. Investors should consult with their own legal, tax and financial advisors with respect to all such risks before making an investment.

The Company is in the early stage of development and has a limited operational history, making it difficult to accurately predict business operations. The Company has limited resources and may run out of capital prior to becoming profitable. The Company may fail and investors may lose their entire investment.

The technical disclosure in this presentation has been approved by Maura J. Kolb, M.Sc., P.Geo. a Qualified Person as defined by National Instrument 43-101 of the Canadian Securities Administrators.

DRYDEN
GOLD CORP



Key Value Drivers



Experienced Management

History of success in building junior mining companies and navigating M&A to create shareholder value

Technical team has extensive regional experience leading the exploration team at the Red Lake Mine



Investment Upside

High-grade gold across the entire Dryden District

Limited historic drilling – 30,000 meters

System has never been drilled tested at depth

Regional Greenfield targets at Hyndman & Sherridon

Strategic investment from Centerra Gold



Favorable Mining Jurisdiction

Excellent infrastructure, including grid power

Major highway access and logging roads

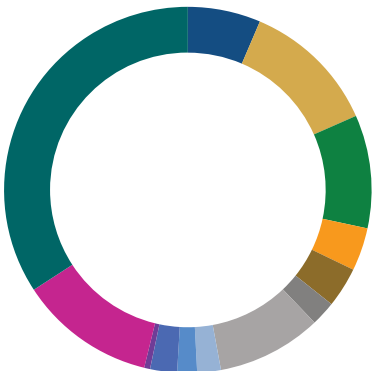
Year-round drilling

Significant tax benefits and government grants

Collaborative relationships with First Nations communities

Trey Wasser	Maura Kolb	Scott Kelly	Anna Hicken	Jason Jessup	Christina McCarthy	Darin Wagner	Stephen Kenwood	Gary Baschuk	Ben Frieman
CEO Director	President	CFO Director	VPX	Independent Director	Independent Director	Advisor	Advisor	Advisor	Advisor

MAJOR SHAREHOLDERS



- Management & Insiders 6.41%
- Alamos Gold (NYSE-AGI) 11.97%
- Centerra Gold Inc. 9.99%
- EuroPac Gold Fund 3.80%
- Medalist Capital 3.55%
- Sprott Asset Management 2.17%
- Delbrook Capital 9.22%
- Eric Sprott 2.08%
- Rob McEwen 1.74%
- Dynamic Funds 2.37%
- Robert Quartermain 0.52%
- Other Institutions 12.00%
- Public Float 34.18%

SHARE STRUCTURE

Trading Symbols as at August 20, 2025	TSXV: DRY OTCQB: DRYGF
Current Issued and Outstanding	192,104,186
Warrants Outstanding	52,679,986
ESOP Options Outstanding	9,000,000
Fully Diluted	253,784,172
Cash Balance	8,400,000

ANALYST COVERAGE

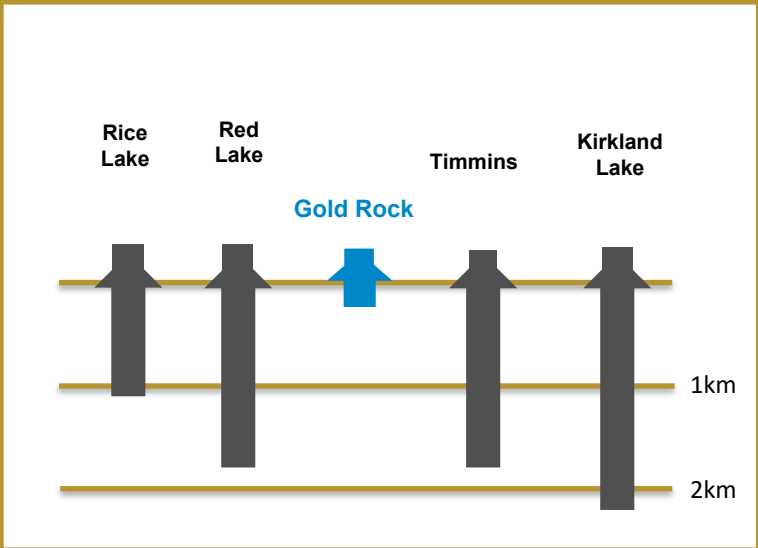
CLARUS SECURITIES Varun Arora	SCP CAPITAL Brandon Gaspar	COULOIR CAPITAL Ron Wortel	KPG WEALTH Pranta Sen Gupta	Independent Mining Analyst Eric Lemieux, M.Sc. P. Geo.
----------------------------------	-------------------------------	-------------------------------	--------------------------------	--

NEWSLETTER WRITER COVERAGE

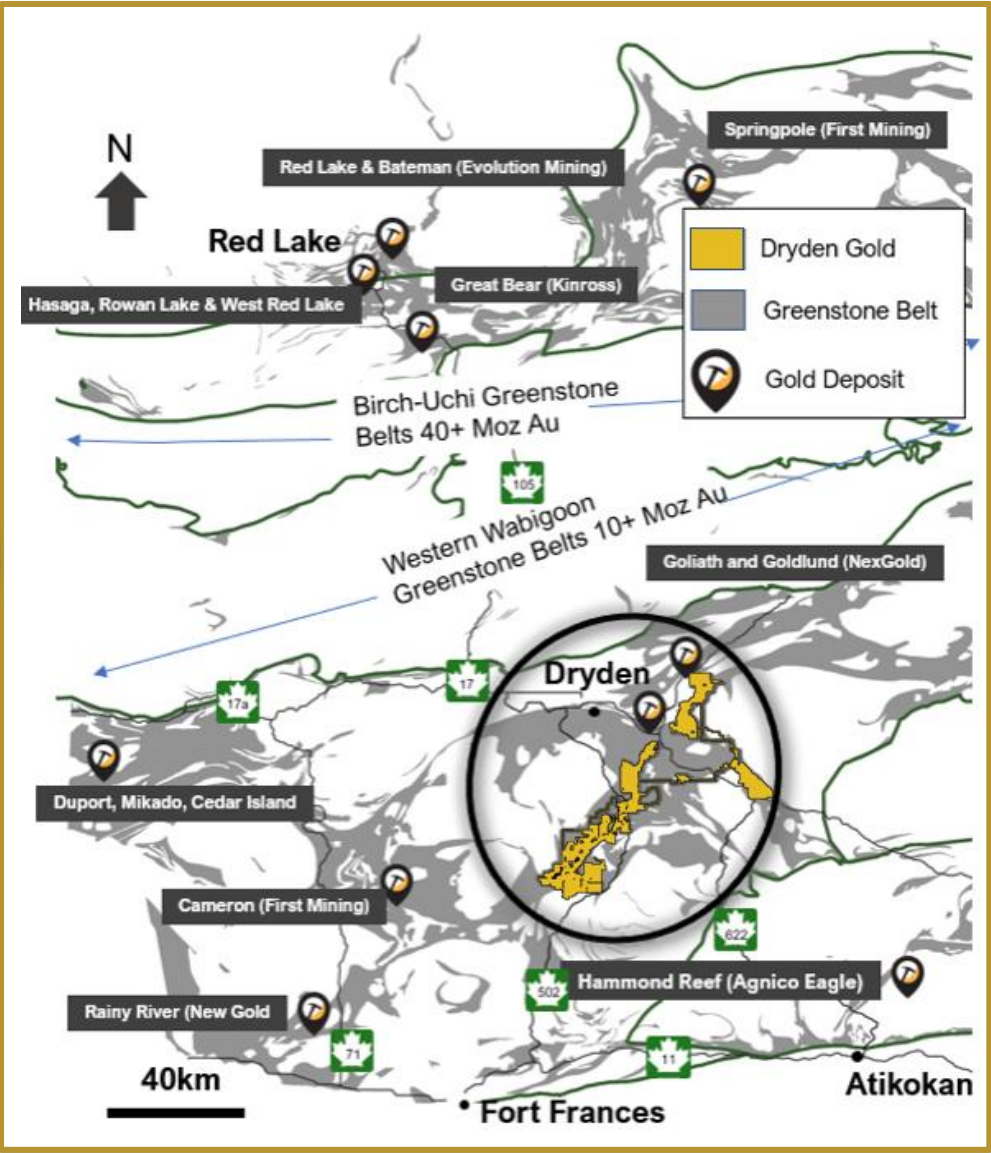
JEFF CLARK The Gold Advisor	BRIEN LUNDIN The Gold Newsletter	CHEN LIN Chen's Stock Picks
--	---	--

Prolific Gold Region | An Under Explored District

Archean Lode Gold Mines Camps Central Canada



Limited exploration & historic mining district-wide at only shallow depths

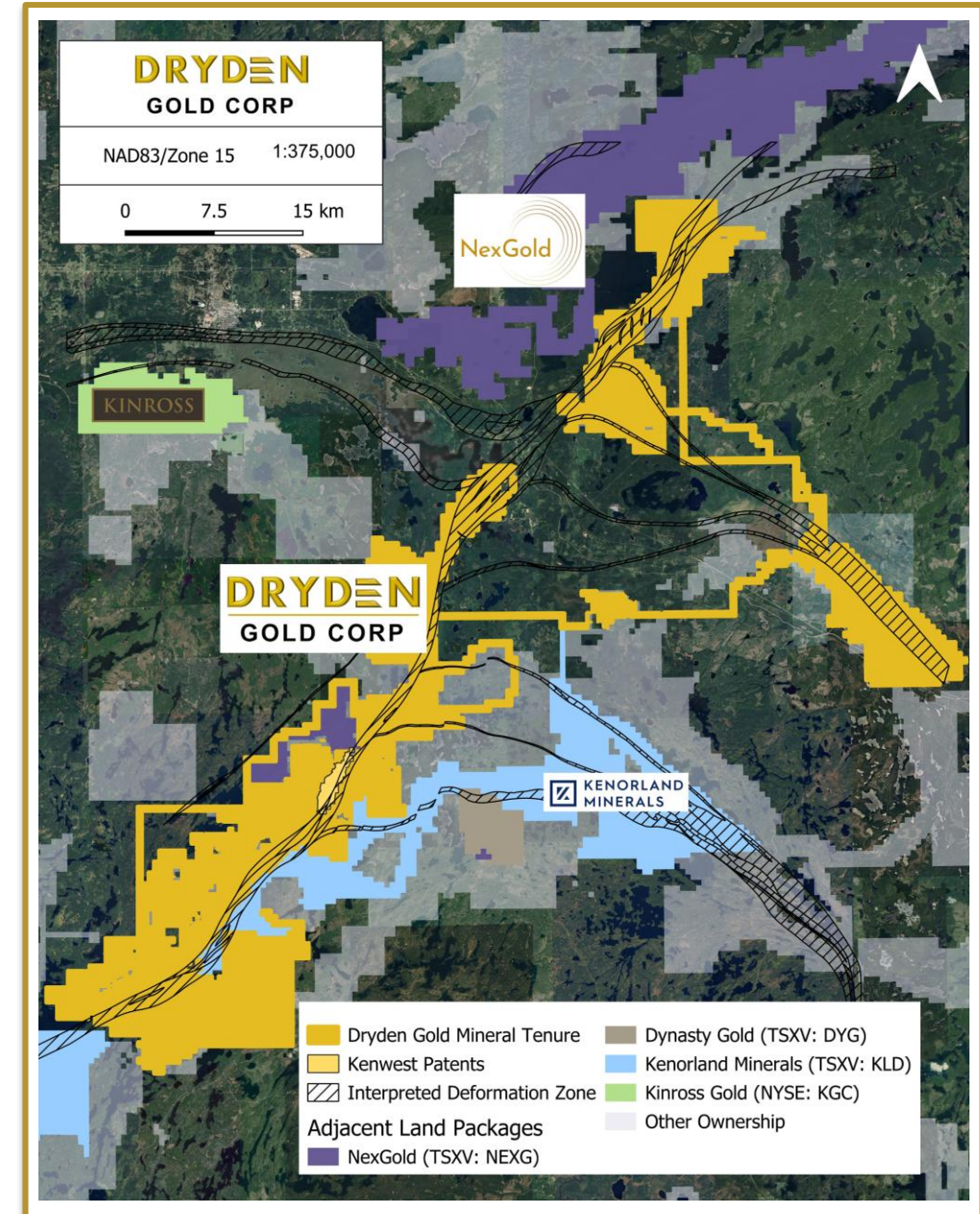


Strategic Land Package

- ▲ Over 702 km² (70,250 hectares) consolidated & 100% owned by Dryden Gold Corp.
- ▲ Excellent infrastructure – Roads, power & labor
- ▲ 50 km strike covering regional gold bearing MDdz structure (Manitou-Dinorwic deformation zone)
- ▲ Two additional cross-cutting regional gold-bearing fault structures

Strategic Exploration Method

- ▲ All oriented drill core to enhance structural interpretation
- ▲ Fully assayed drill core to define stacked structures in different host rocks
- ▲ Smaller drill passes, integrating new data for each phase insuring geological & structural controls go into targeting
- ▲ Year-round drilling at industry low cost of \$250/m (all in)



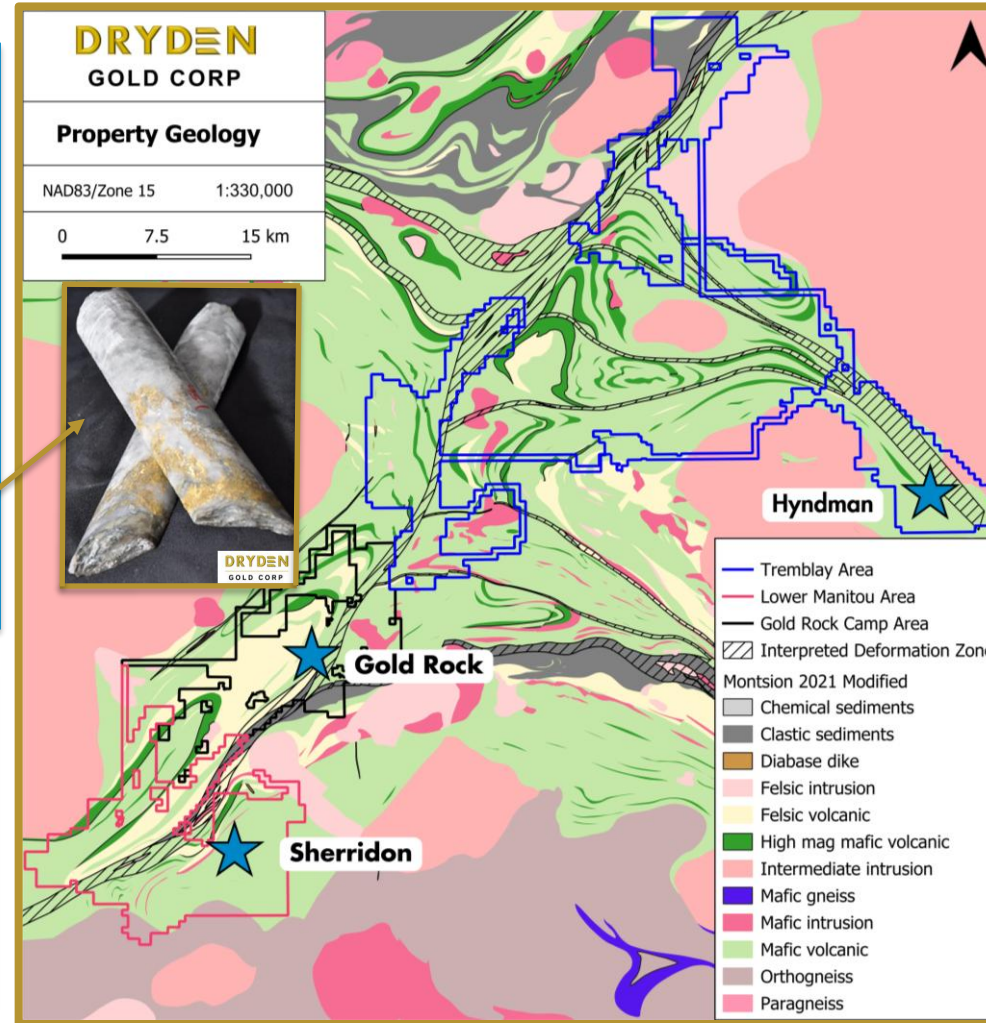
District Scale | Near Surface High-Grade Gold Across Property

Gold Rock Camp Drill Highlights

- ▲ 301.67 g/t gold over 3.90 meters including 1,930.00 g/t over 0.60 meters
- ▲ 55.34 g/t gold over 3.50 meters including 379.00 g/t gold over 0.50 meters
- ▲ 30.72 g/t gold over 5.70 meters
- ▲ 15.17 g/t gold over 6.95 meters
- ▲ 15.40 g/t gold over 6.10 meters
- ▲ 26.11 g/t gold over 3.16 meters, including 79.80 g/t gold over 0.33 meters
- ▲ 3,497.0 g/t gold over 8.50 meters *historic drill hole* including 53,700 g/t gold over 0.55 meters

Sherridon Drill Highlights

- ▲ 7.70 g/t gold over 3.00 meters *historic drill hole* including 46.00 g/t gold over 0.50 meters
- ▲ 15.40 g/t gold over 5.50 meters *historic drill hole* including 83.10 g/t gold over 1.00 meters



Hyndman Field Samples

- ▲ 34.80 g/t gold grab sample 2024
- ▲ 13.00 g/t gold grab sample 2023
- ▲ 12.30 g/t gold grab sample 2023
- ▲ 10.90 g/t gold grab sample 2023
- ▲ 6.41 g/t gold grab sample 2024

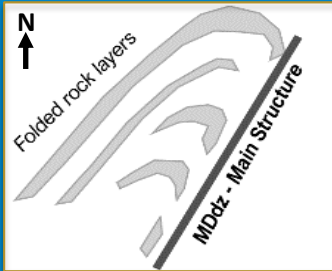
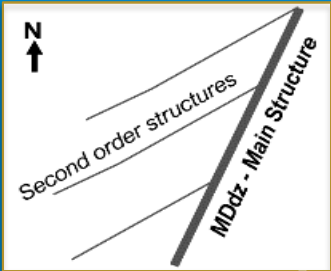
Sherridon Field Samples

- ▲ 617.00 g/t gold grab sample (historic)
- ▲ 184.50 g/t gold grab sample (historic)
- ▲ 123.00 g/t gold grab sample (historic)
- ▲ 122.50 g/t gold grab sample (historic)

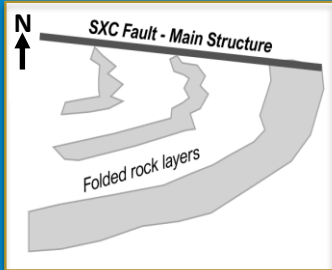
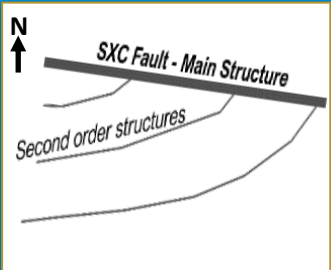
Gold Rock Camp

Similar Geological Setting to Red Lake

Dryden Gold Corp. Gold Rock Area Geology



Red Lake Mine Geology



Similar geological setting, rock types with regional folding and structural geometry

Favorable geological gold traps for high-grade gold

Various styles of gold mineralization

Quartz veins w/ free gold, shears hosting gold, disseminated sulfides

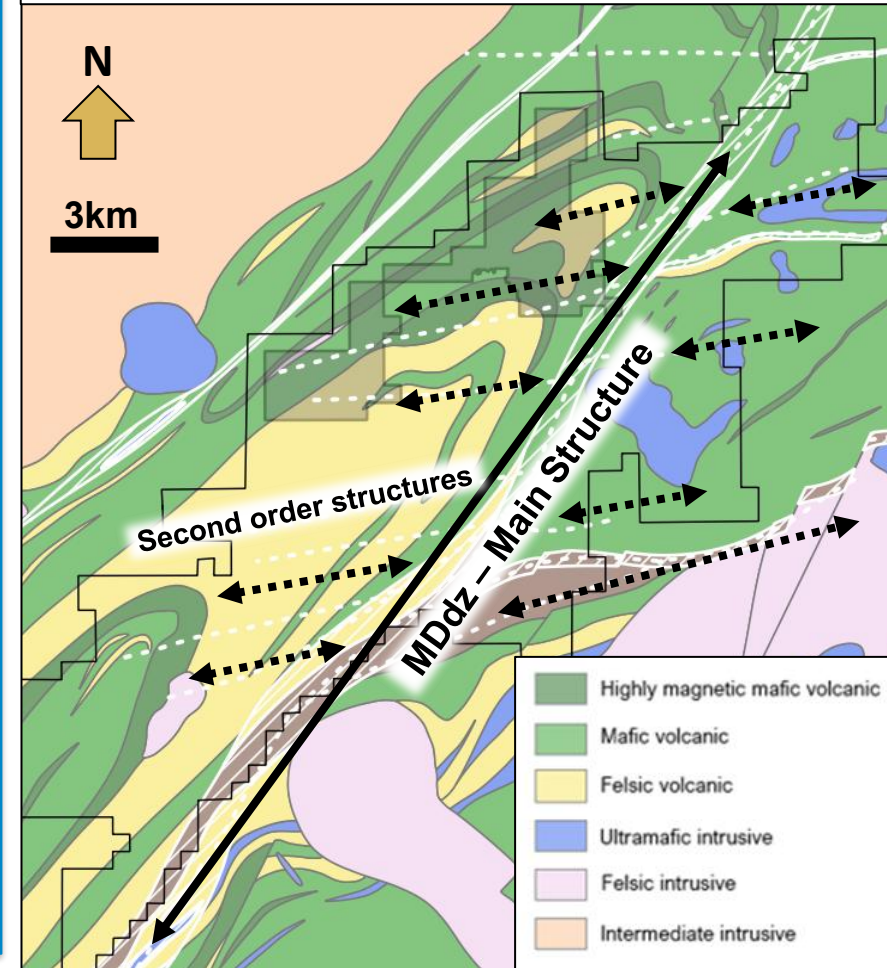
Very similar footprint at Red Lake and Gold Rock Camp

Stacked zones of mineralization in different structural planes at Red Lake & Gold Rock

Periodicity to these mineralized areas

Red Lake discovered through mineralization outcropping on surface like Gold Rock Camp

Gold Rock Camp Geology



Dryden District | Fully Funded Exploration Objectives

CURRENT EXPLORATION GOALS

- 1 GROW THE **ELORA GOLD SYSTEM** ALONG STRIKE TESTING NEW STRUCTURAL INTERSECTIONS
- 2 EXPLORE FOR HIGH-GRADE IN THE **MINERALIZED** STRUCTURES ACROSS THE **GOLD ROCK TARGET AREA**
- 3 TEST **MUD LAKE** AND ALONG STRIKE IN THE **GOLD ROCK CAMP**
- 4 FULLY INVESTIGATE HIGHLY PROSPECTIVE REGIONAL TARGETS **HYNDMAN** AND **SHERRIDON**

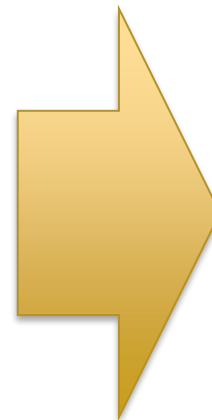
FUTURE EXPLORATION GOALS

2026 PROGRAM WILL BE DESIGNED BASED ON **FALL 2025 RESULTS**

SYSTEMATIC TARGET DEVELOPMENT THROUGHOUT THE **GOLD ROCK CAMP**

2026 EXPLORATION PROGRAM FOCUSED ON **PROPERTY WIDE DISCOVERY**

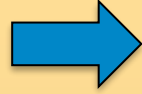
EARLY-STAGE EXPLORATION BASED ON **2025 SOIL TILL RESULTS**



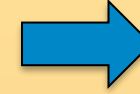
DRYDEN
GOLD CORP

Gold Rock | Targeting High-Grade Structures

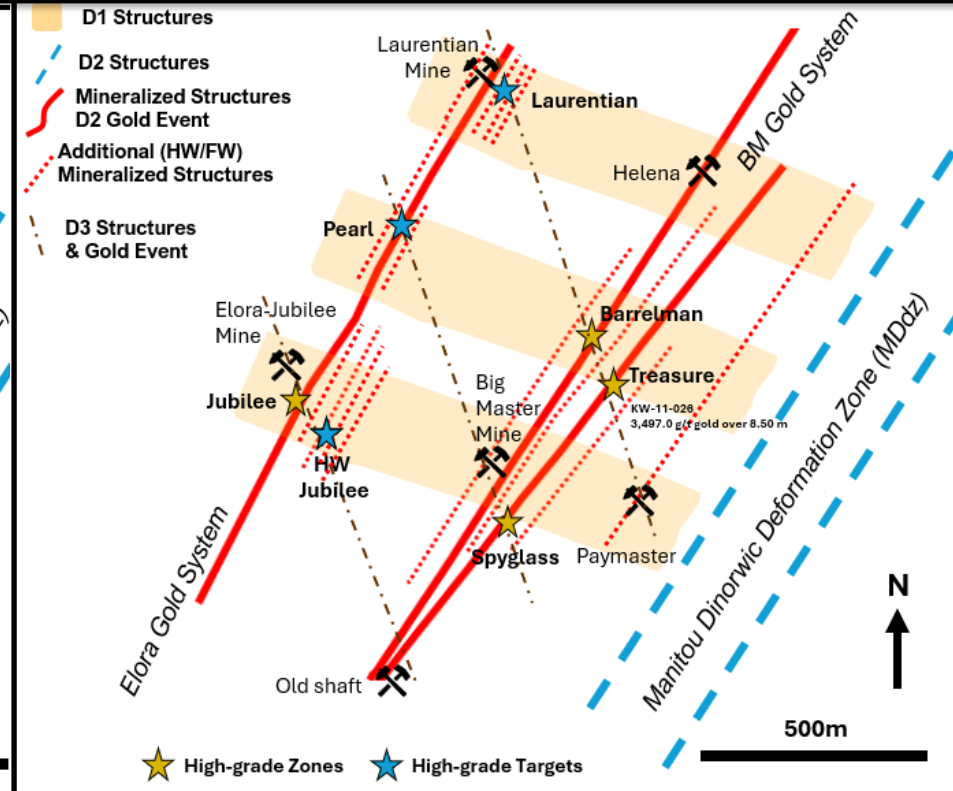
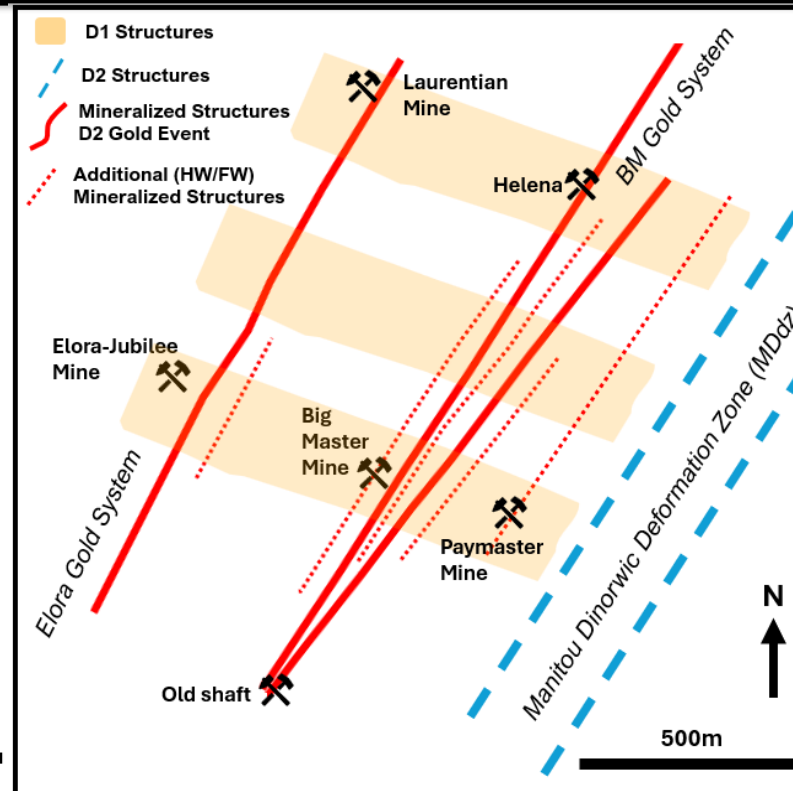
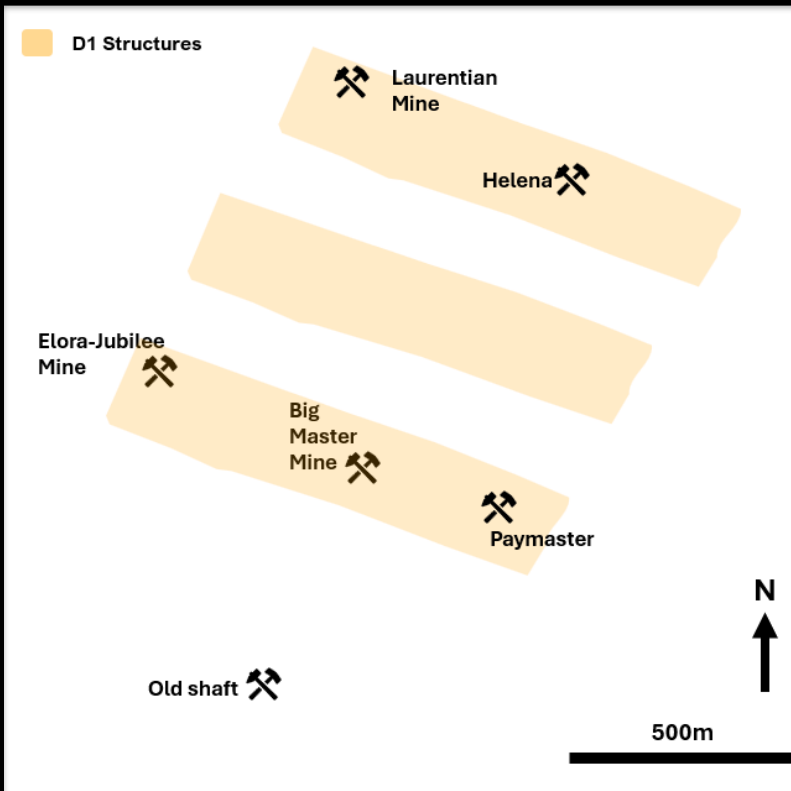
First Deformation Event



Second Deformation
& Gold Mineralization Event

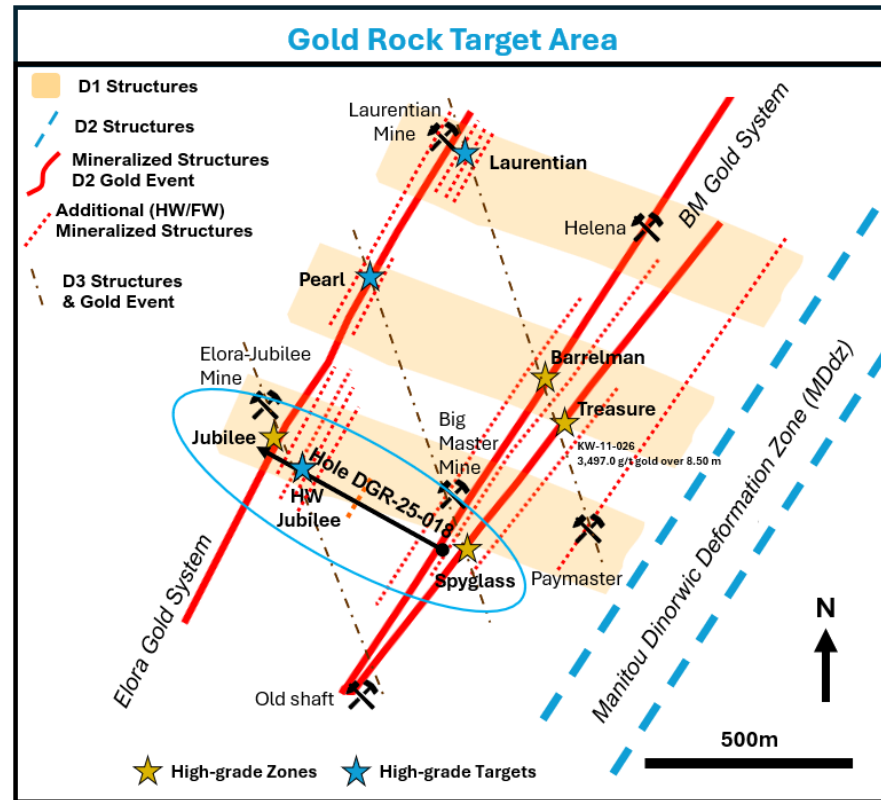


Third Deformation
& Gold Mineralization Event

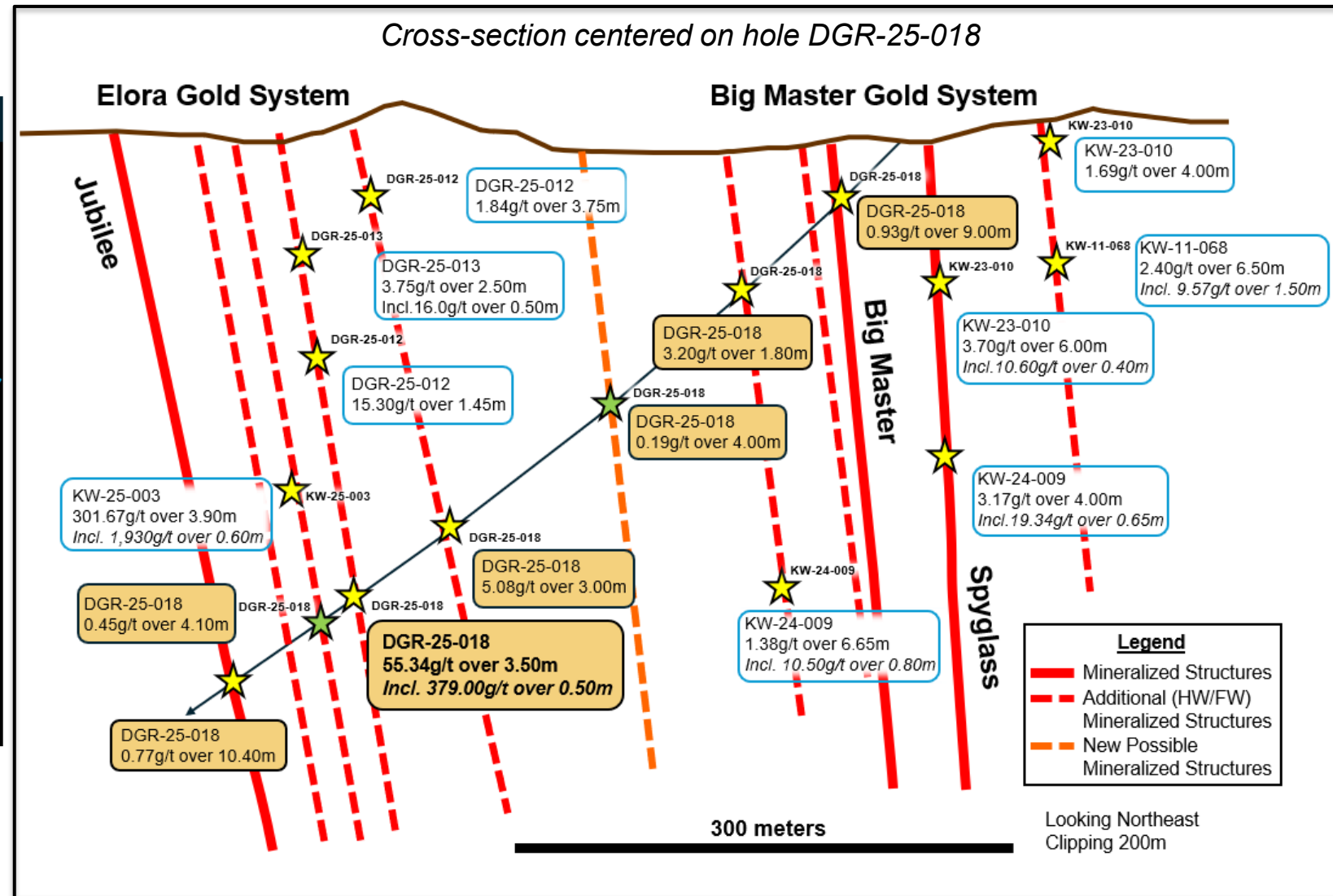


Note - figures are simplified schematic maps of the interpreted deformation and mineralization history

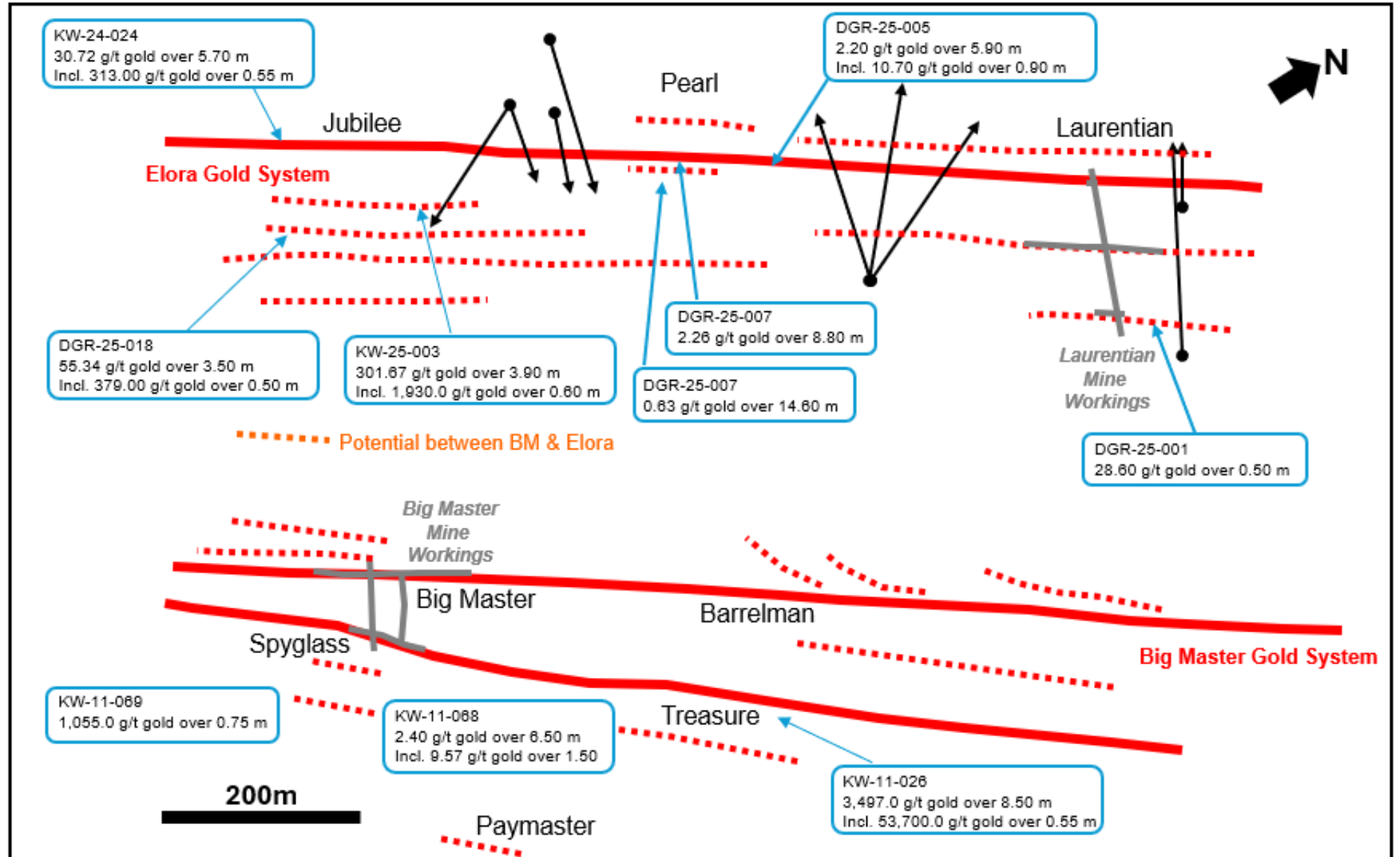
Gold Rock Target Area | Multiple Stacked Mineralized Structures



map with cross-section location

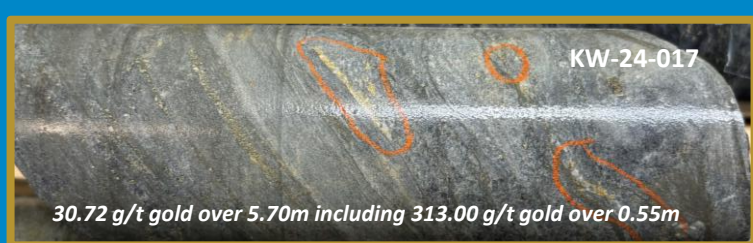


Gold Rock | Elora Gold System | Current Drill Testing

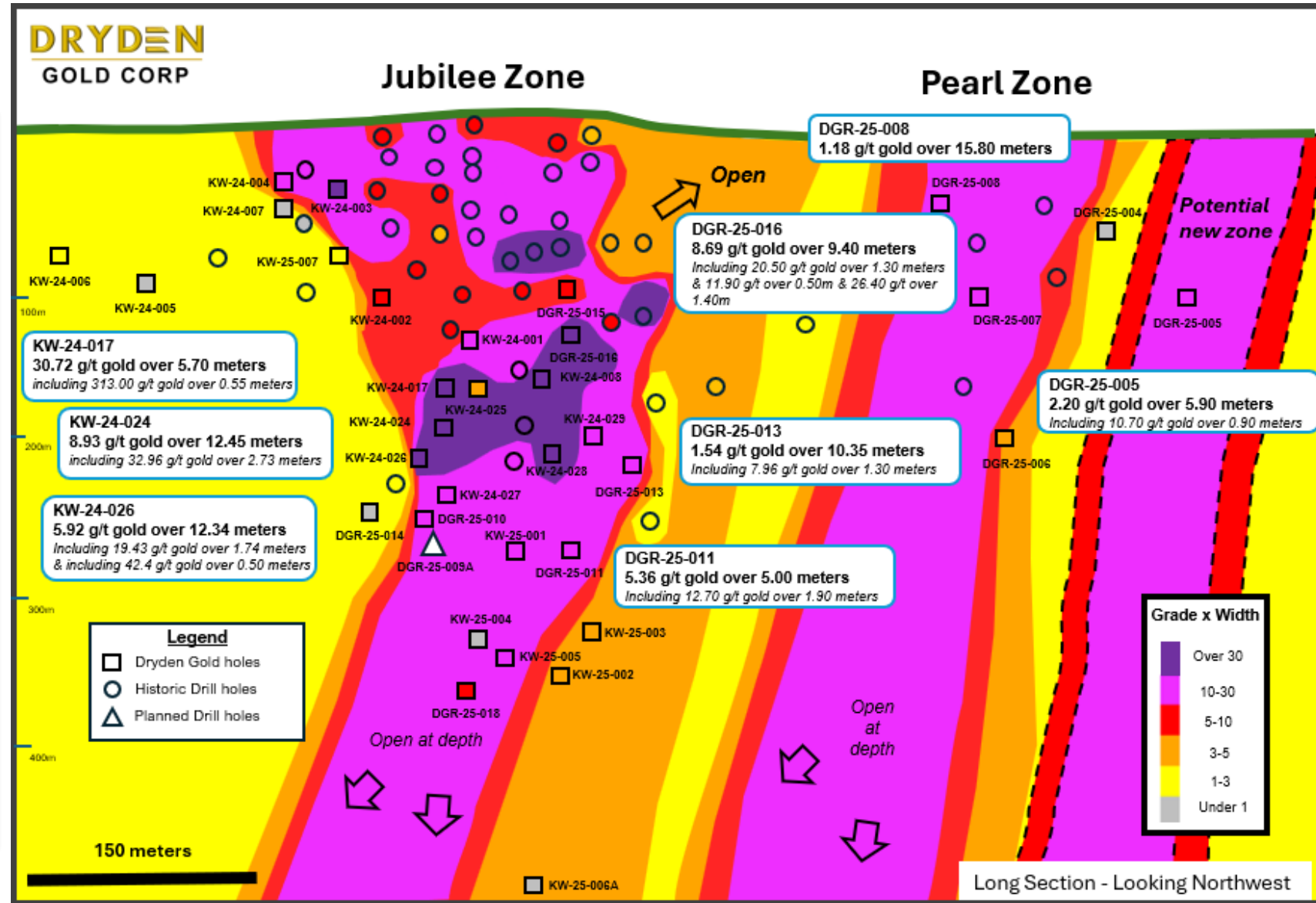


Elora Gold System | Jubilee & Pearl Zones

Expanding Strike & Depth

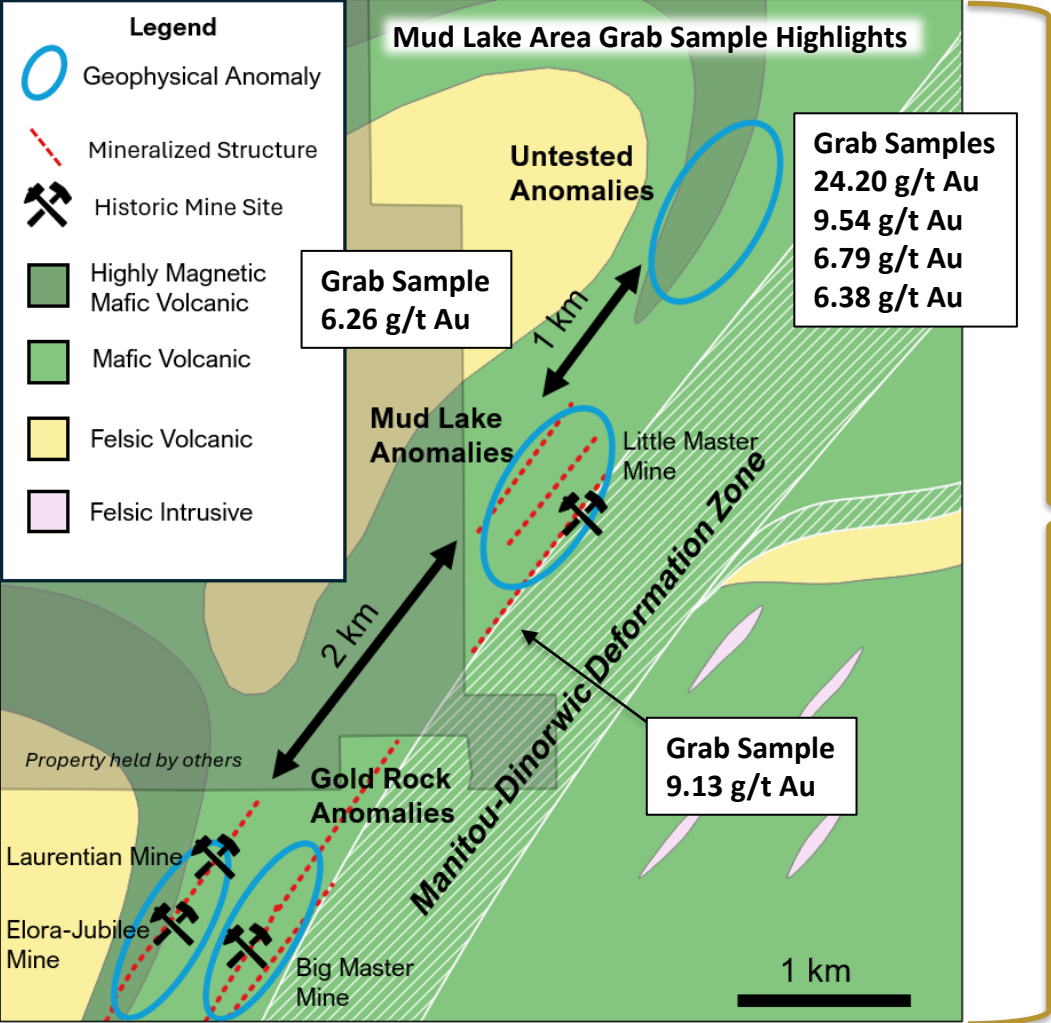


- Targeting sheared basalt with sulphide mineralization & quartz stringer veins
- Testing gold mineralization continuity down plunge and along strike

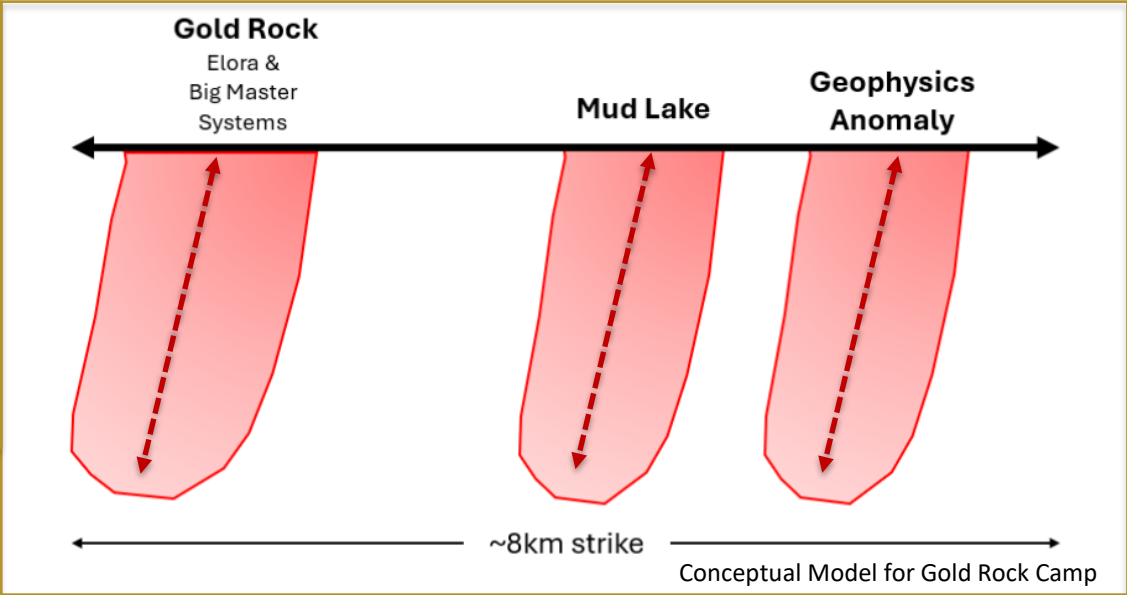


Gold Rock | Periodicity | Another Comparison to Red Lake

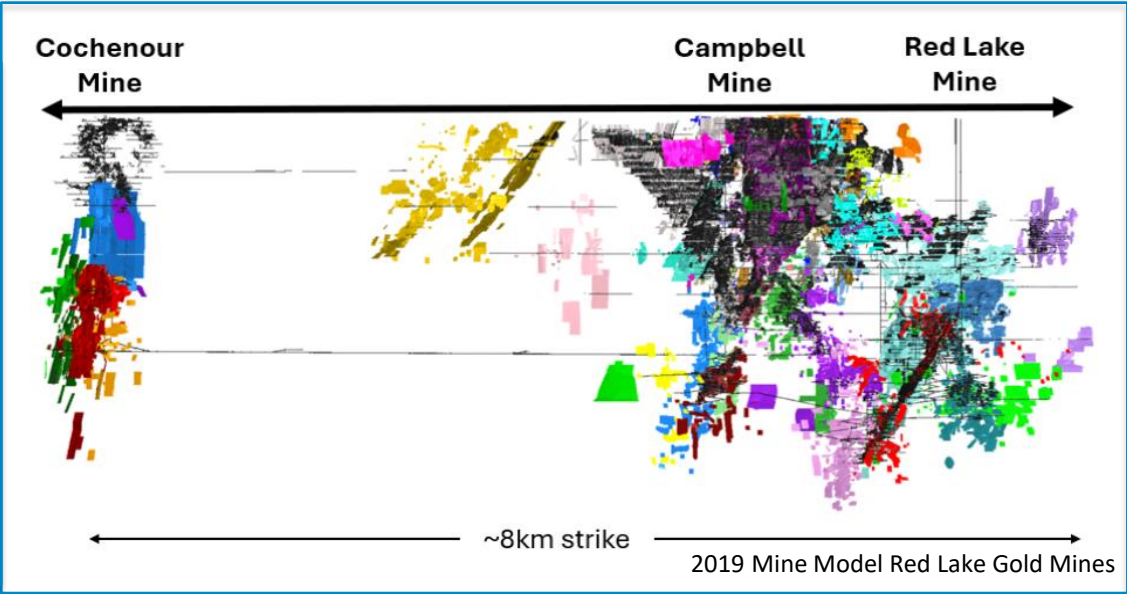
Gold Rock Trend Map - Gold Rock, Mud Lake Area and Untested



Long Section
from
Gold Rock
to
Mud Lake
to
Untested
Geophysics
Anomalies



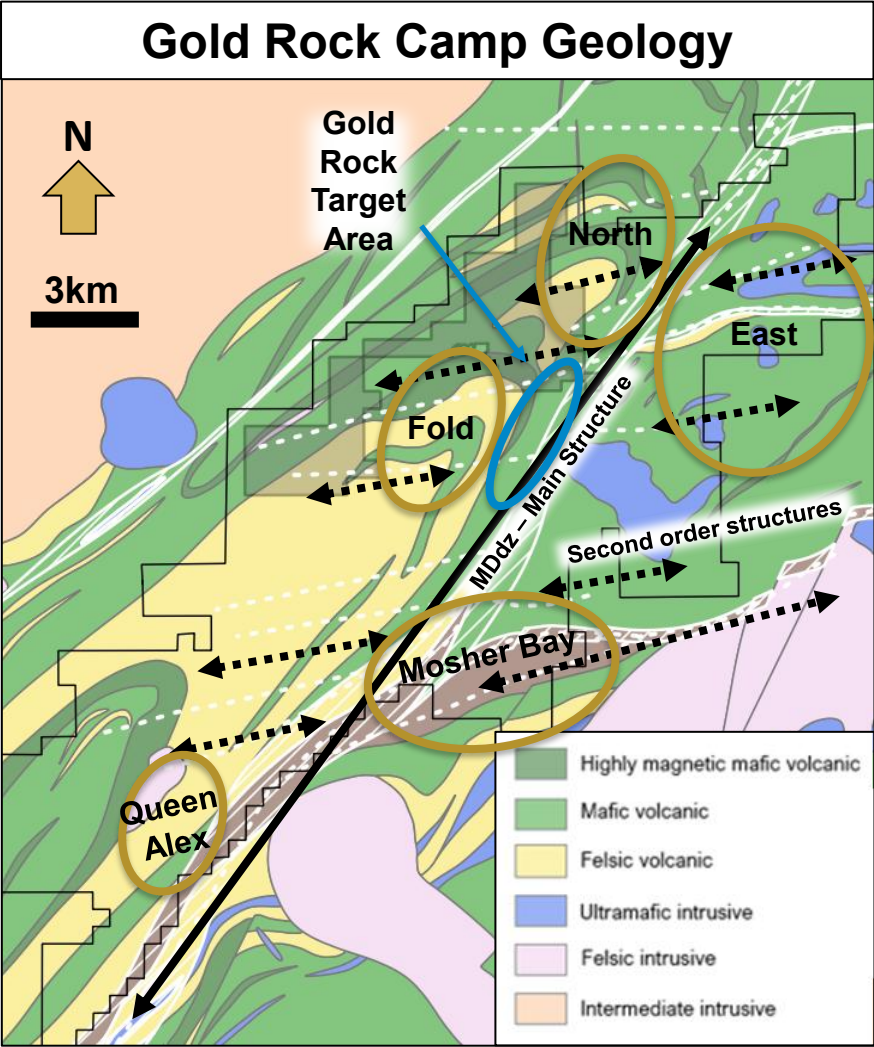
Long Section
from
Red Lake
Mine
to
Campbell
Mine
To
Cochenour
Mine



Dryden Gold's Resource Pipeline

- 2025 Exploration Emphasis on **Gold Rock Camp** Targets - **Drill Permitted** for Northern Extensions
- Sherridon & Hyndman**- Two Regional Target Areas Identified and **Now Permitted** for Further Field Work & Drilling During 2025 Campaign

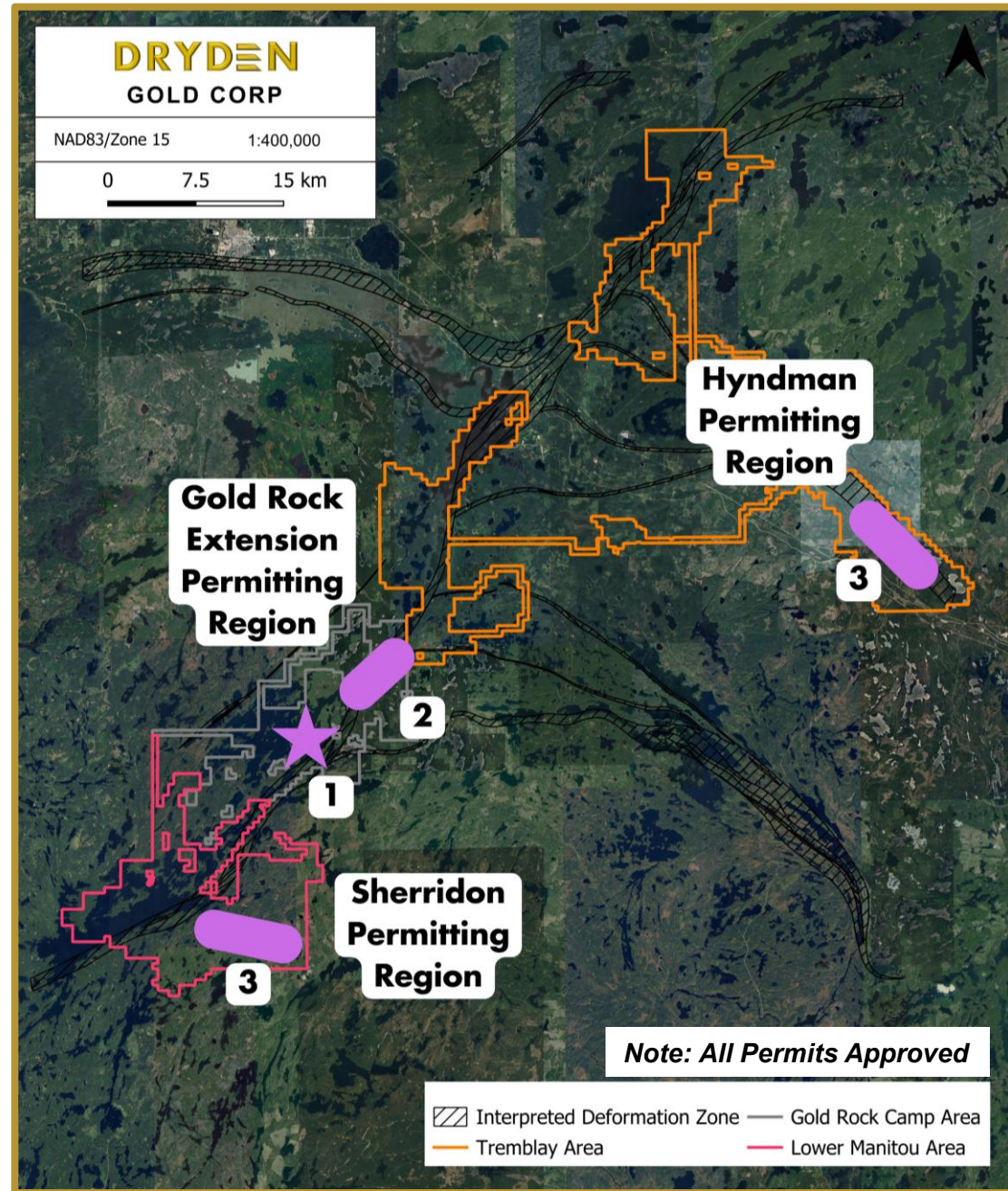
Regional (District) Target	Conceptual Target	Early-stage Target	Identified Target	Follow Up Target	Drill Ready Target	Early Resource Definition
Sandybeach MDdz	Snowfall Anomalies	Gold Rock West	Gold Rock North <i>untested anomalies</i>	Hyndman Channel Sampling	Sherridon	Elora Gold System
Avery MDdz		Gold Rock Selby	Gold Rock East <i>Goldcliff</i>	Hyndman Untested Anomalies	Gold Rock North <i>Mud Lake</i>	Elora Extensions
Avery Wabigoon Splays		Gaffney MDdz	Gold Rock South <i>Queen Alexandra</i>	Gold Rock South <i>Mosher Bay</i>	Big Master Southern Extensions	Big Master Gold System
	Gaffney Patents			Gold Rock Fold <i>Trafalgar Bay</i>		
Conceptual		Grassroots		Brownfields		Resource



2025 Regional Exploration

Regional Exploration Targeting New Discoveries

- ▲ Highly **prospective** land package
- ▲ **Numerous** Regional targets
- ▲ Structural Synthesis – Tectonic Evolution
- ▲ **District Scale Potential**
- ▲ Multiple Deposit Models
 - ▲ **Sherridon** (Ultramafic Host)
 - ▲ **Hyndman** (Granodiorite Host)



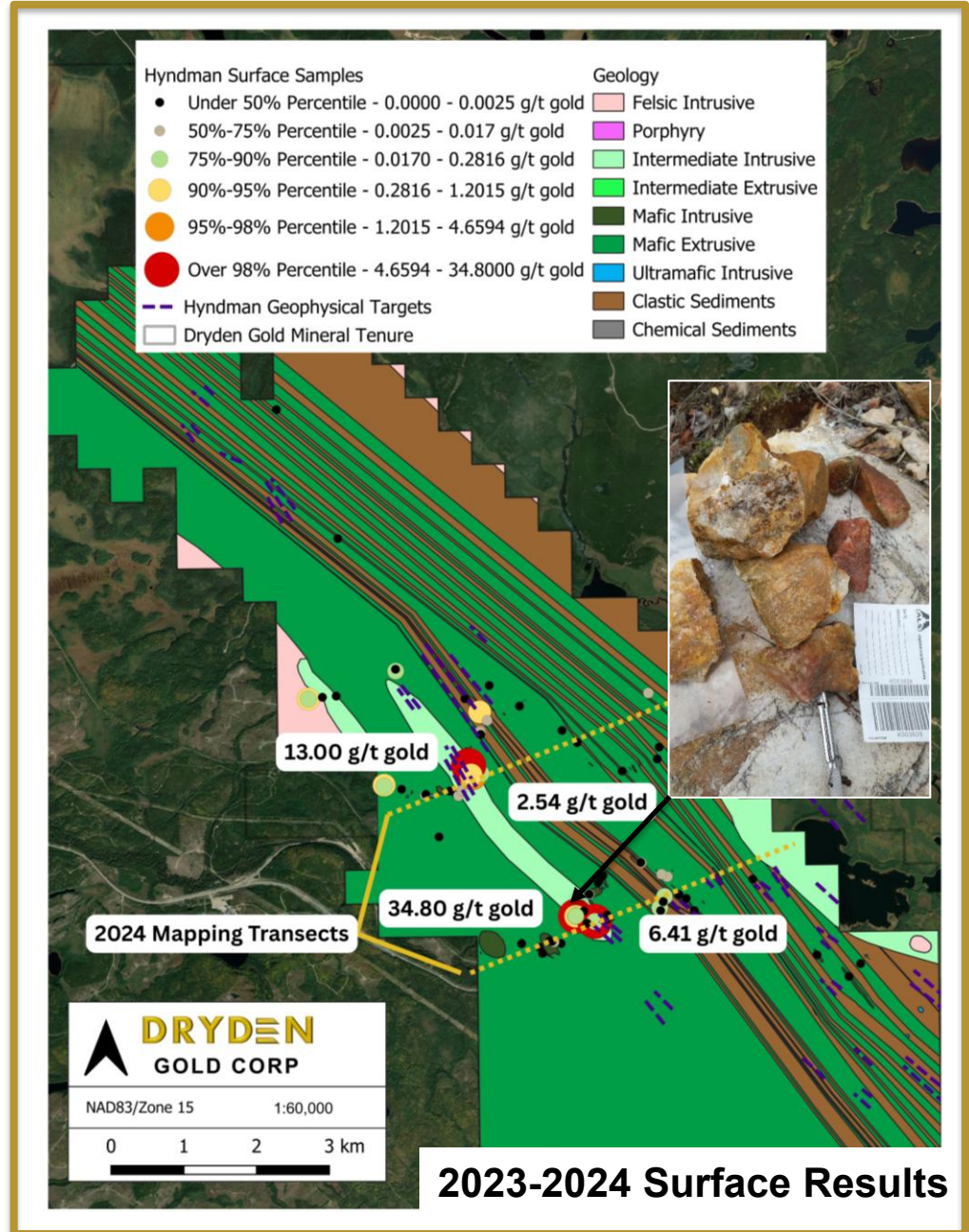
Hyndman | Regional Exploration

- Field programs in 2024 & 2023 discovered new gold showings with 19 samples returning gold values higher than 1.00 g/t gold and 6 samples returning grades over 5 g/t gold.

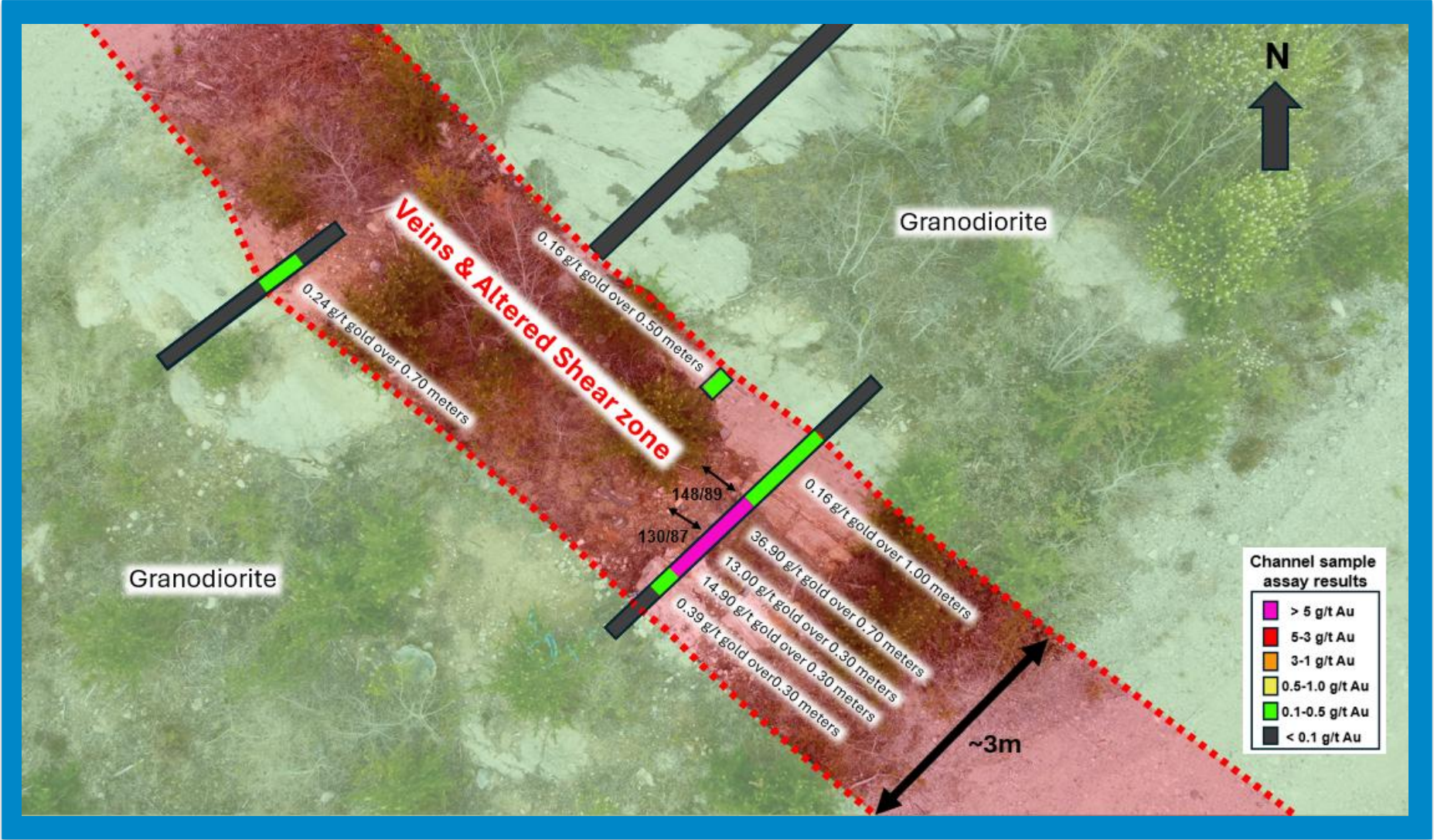
- Channel sample program from 2025 width of mineralization and sampled more difficult terrane to sample with traditional rock and hammer methods.
- 23.32 g/t gold over 2.80 meters**, incl. 24.79 g/t gold over 1.50 meters also incl. 36.90 g/t gold over 0.70 meters

- Soil and till sampling program across the property (including Hyndman) will help vector in on the full potential for additional gold-bearing targets.

DRYDEN
GOLD CORP



Hyndman | Channel Sample Results



Highlights Hyndman Channel Program

23.32 g/t Au over 2.80 m
*incl. 24.79 g/t Au over 1.50 m
& incl. 36.90 g/t Au over 0.70 m*

Gold mineralization
hosted in
veining and shear zone

Potential for
4 km's of mineralization
based on trend of
granodiorite host

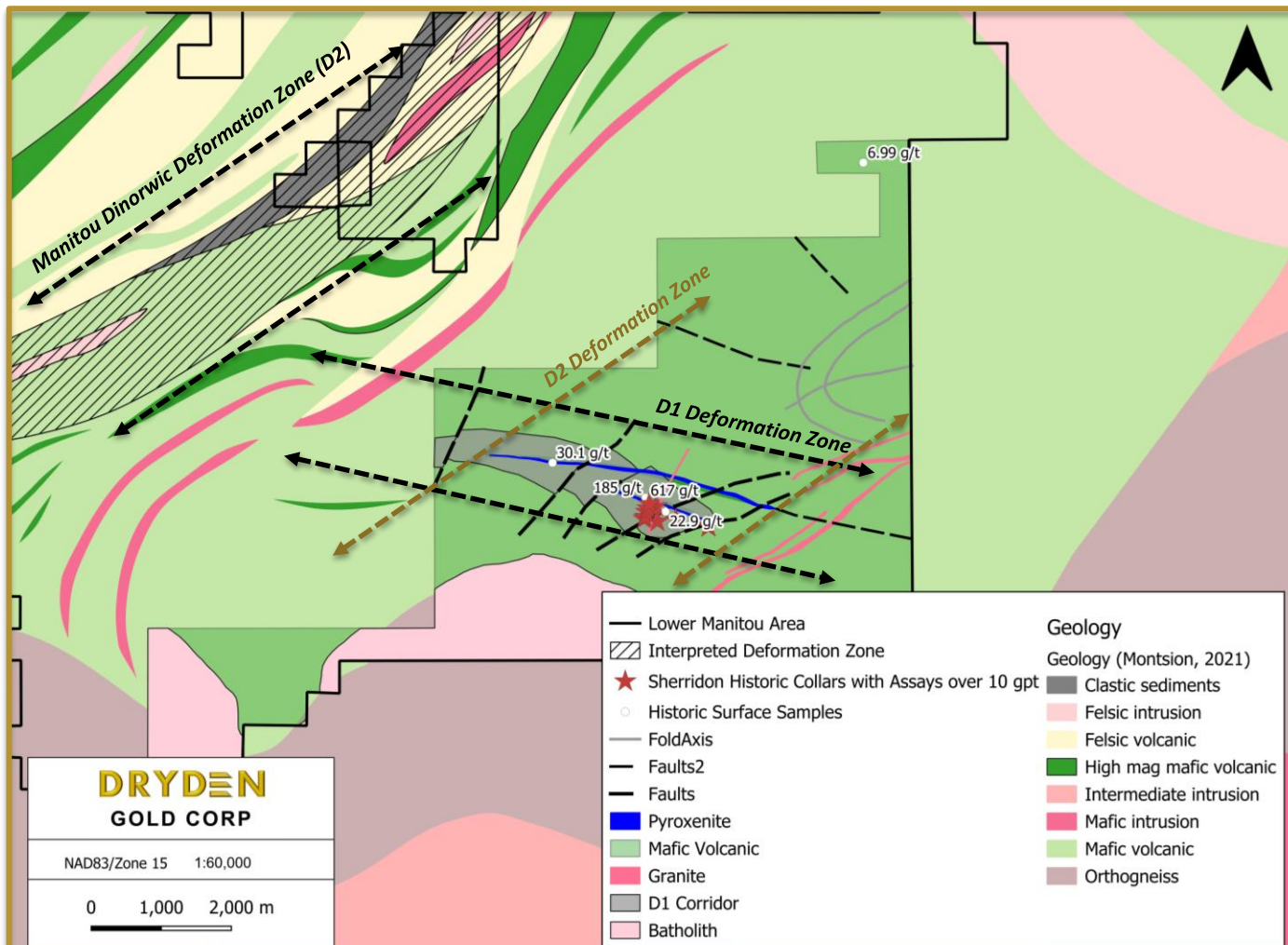
Sherridon | Regional Exploration

Assay Highlights:

- ▲ **617.00 g/t gold** surface sample
- ▲ Several surface samples over **100.00 g/t gold**
- ▲ Hole SH-12-25 **15.40 g/t gold** over 5.50 m including 83.70 g/t gold over 1.00 m

- ▲ It is hosted in mafic volcanic along a D1(east-west) deformation zone within a region that hosts D2 oriented faulting and D1 oriented pyroxenite dykes
- ▲ The pyroxenite dykes appear closely associated with mineralization and are likely infilling the same fluid pathways that introduced the gold.

DRYDEN
GOLD CORP



Mapping & geological modeling completed in 2024
Initial drill program is scheduled for June 2025.

Exploration Budget | Marketing

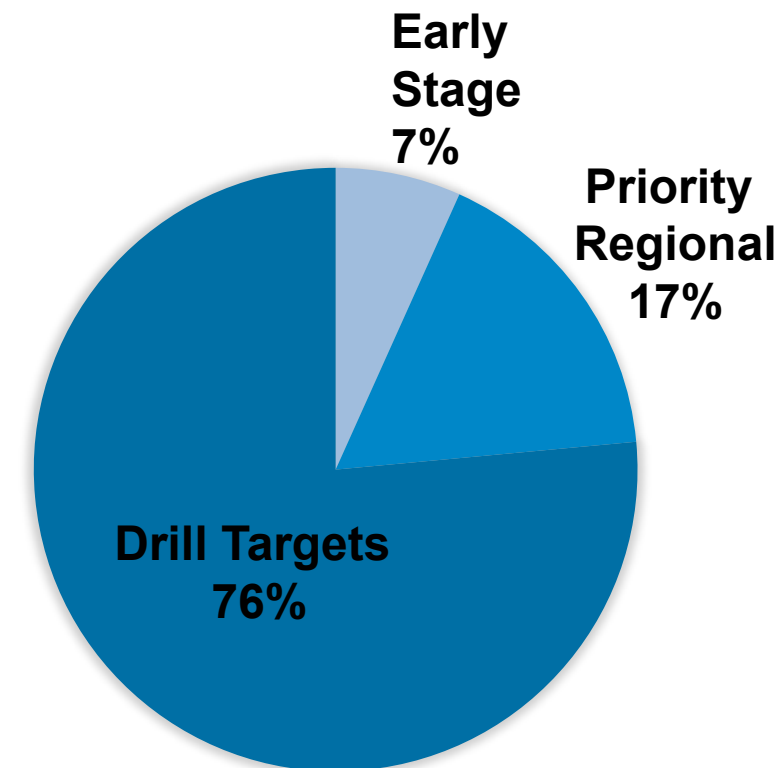
5.95M – 2026 Funded Exploration Budget (Current Financing)

Item	Property	Cost (\$CAD)
Mapping, Channels, Sampling & Other	Regional Targets <i>Sherridon, Gold Rock expanded, other</i>	\$650,000
Drilling	Drill Targets Gold Rock & Other	\$5,300,000

2026 Funded Exploration Budget 5.95 M will begin in Q4 2025

5.8M - 2025 Funded Exploration Budget (Previous Funds Raised)

Item	Property	Cost (\$CAD)
LiDAR & Till/Soil Geochemical Survey	Early Stage - All properties	\$800,000
Mapping, Channels, Sampling & Other	Priority Regional Targets <i>Sherridon, Gold Rock expanded, other</i>	\$850,000
Drilling	Gold Rock & Gold Rock Extension targets	\$3,350,000
Drilling	Priority Regional Targets <i>Gold Rock, Hyndman, Sherridon</i>	\$500,000



23,000+ Meters of Drilling in the 2026 Budget

121 Mining
Investment
Global Online

Virtual
Oct 14-15

New Orleans
Investment
Conference

New Orleans
Nov 2-5

Central Canadian
Mineral
Exploration
Convention

Winnipeg
Nov 3-4

Atlanta
Roadshow
Investor Lunch

Atlanta
Nov 6

121 Mining
Investment
London

London
Nov 17-18

Swiss Mining
Institute

Zurich
Nov 19-20

Swiss Mining
Institute

Zurich
Nov 19-20

TakeStock
YVR 2026

Vancouver
January 25

AME
Roundup

Vancouver
January 26-29

DRYDEN

GOLD CORP

TSXV: **DRY** | OTCQB: **DRYGF** | FSE: **X7W** DRYDENGOLD.COM | 19

Why Dryden Gold?

- ▲ The Property
- ▲ The Team
- ▲ The High-Grade Gold
- ▲ The Geology
- ▲ The Jurisdiction
- ▲ The Infrastructure
- ▲ The Shareholders
- ▲ The Funding

With Four Clear Catalysts to Create Shareholder Value in 2025

- ▲ Expanding Gold Rock Target Area Along Strike with Multiple Stacked Gold-bearing Structures
- ▲ Potential to Prove Periodicity in the Gold Rock Camp at Mud Lake
- ▲ Potential for New Discovery at Sherridon
- ▲ Potential for New Discovery at Hyndman



DRYDEN

GOLD CORP



DRYDEN

GOLD CORP

TSXV: DRY | OTCQB: DRYGF | FSE: X7W
DRYDENGOLD.COM

Contact:

Trey Wasser CEO & Director
+1 (940) 368-8337
twasser@drydengold.com

Maura Kolb President & QP
+1 (807) 632-2368
mjkolb@drydengold.com

ir@scorpiogold.com

