



# DRYDEN

---

## GOLD CORP

TSXV: **DRY.v** | OTCQB: **DRYGF** | FSE: **X7W**  
[drydengold.com](http://drydengold.com)

JULY 2025

# Acknowledgements & Forward-Looking Statements

***Dryden Gold Corp acknowledges all Indigenous Peoples and that it is operating on the traditional homelands of the Wabigoon Lake Ojibway Nation and Eagle Lake First Nation.***

*Certain statements contained herein constitute “forward-looking statements” within the meaning of the applicable Canadian securities legislation. These forward-looking statements are based on current expectations, estimates and projections about the Canadian mining and mineral exploration industry based on management’s beliefs and certain assumptions made by management. Readers are cautioned that such forward-looking statements are not guarantees of future performance and are subject to risks, uncertainties and assumptions that are difficult to predict and the actual results and performance of Dryden Gold Corp. (the “Company”) may differ materially from the results implied by such statements. Readers are cautioned not to place undue reliance on any forward-looking statements. Unless otherwise required by law, the Company also disclaims any obligation to update its view of any such risks or uncertainties or to announce publicly the result of any revisions to the forward-looking statements made here.*

*This document contains proprietary information that is the property of Dryden Gold Corp. Neither this document, nor the proprietary information contained herein, shall be published, reproduced, copied, disclosed or used for any other purpose, other than the review and consideration of this document.*

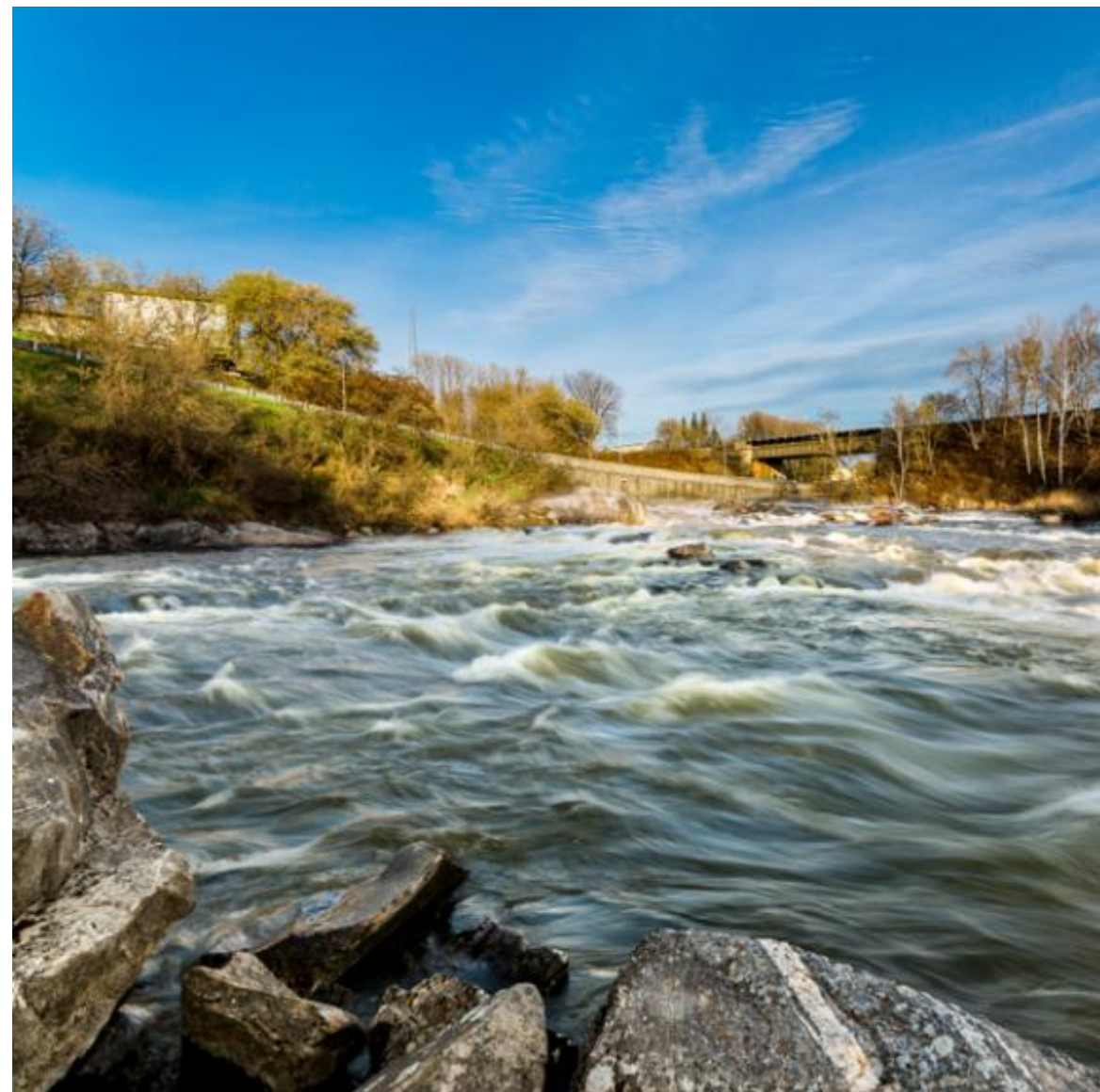
*This presentation is not an offer, nor the solicitation of an offer to buy any securities. Such an offer, if made, will be made only through a prospectus or other such document issued in accordance with applicable securities laws, and other applicable laws, rules and regulations., Or pursuant to the applicable exemption from the requirement to deliver a prospectus, in accordance with applicable laws.*

*Historical statements contained in this document regarding past activities should not be taken as a representation that such trends or activities will continue in the future. In particular, historical results should not be taken as a representation that such trends will be replicated in the future. No statement in this document is intended to be nor may be construed as a profit forecast.*

*An investment in the Company is speculative and involves substantial risk and is only suitable for investors that understand the potential consequences and are able to bear the risk of losing their entire investment. Investors should consult with their own legal, tax and financial advisors with respect to all such risks before making an investment.*

*The Company is in the early stage of development and has a limited operational history, making it difficult to accurately predict business operations. The Company has limited resources and may run out of capital prior to becoming profitable. The Company may fail and investors may lose their entire investment.*

*The technical disclosure in this presentation has been approved by Maura J. Kolb, M.Sc., P.Geo. a Qualified Person as defined by National Instrument 43-101 of the Canadian Securities Administrators.*





# Key Value Drivers



## Experienced Management

**History of success** in building junior mining companies and navigating M&A to create shareholder value

**Technical team** has extensive regional experience leading the exploration team at the Red Lake Mine



## Investment Upside

**High-grade gold** across the entire Dryden District

**Limited drilling** – 30,000 meters

**System has never** been drilled tested at depth

**Regional Greenfield targets** at Hyndman & Sherridon

**Strategic investment** from Centerra Gold



## Favourable Mining Jurisdiction

**Excellent infrastructure**, including grid power

**Major highway access** and logging roads

**Year-round drilling**

**Significant tax benefits** and government grants

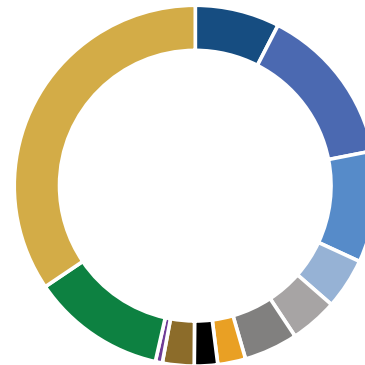
**Collaborative relationships** with First Nations communities

**DRYDEN**

GOLD CORP



## MAJOR SHAREHOLDERS



Management & Insiders	7.56%
Centerra Gold Inc.	9.99%
Alamos Gold (NYSE-AGI)	14.34%
EuroPac Gold Fund	4.55%
Medalist Capital	4.26%
Delbrook Capital	4.81%
Eric Sprott	2.49%
Rob McEwen	2.08%
Dynamic Funds	2.83%
Robert Quartermain	0.62%
Other Institutions	12.00%
Public Float	34.47%

## SHARE STRUCTURE

Trading Symbols As at May 23, 2025	TSXV: DRY OTCQB: DRYGF
Current Issued and Outstanding	160,362,519
Warrants Outstanding	52,699,986
ESOP Options Outstanding	9,100,000
Fully Diluted	222,162,505
Cash Balance	4,150,000

## NEWSLETTER WRITER COVERAGE

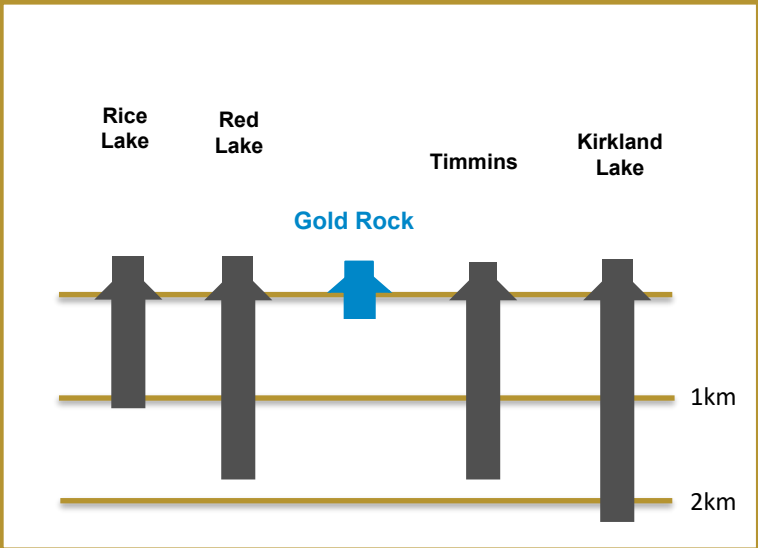
**JEFF CLARK**  
[The Gold Advisor](#)

**BRIEN LUNDIN**  
[The Gold Newsletter](#)

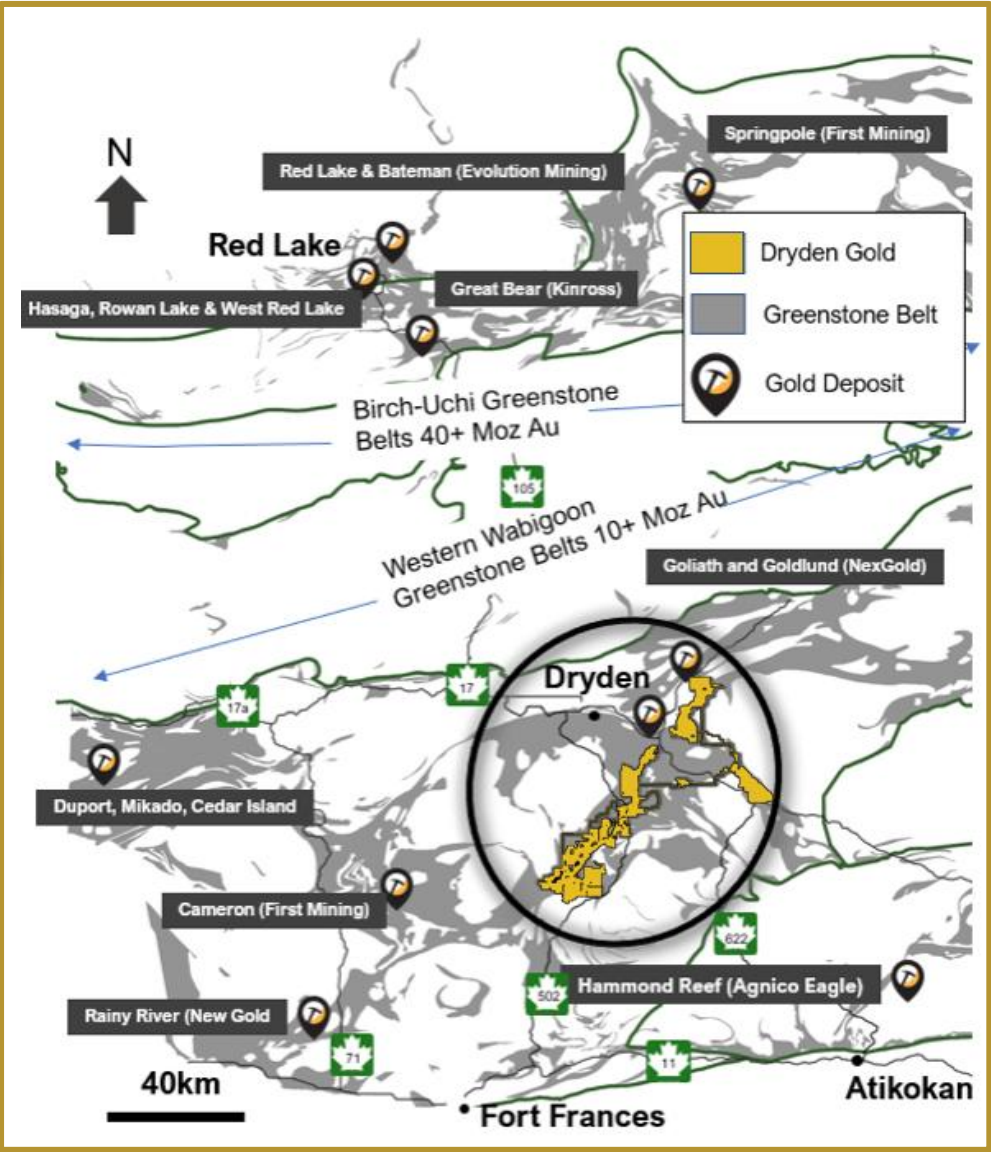
**CHEN LIN**  
[Chen's Stock Picks](#)

# Prolific Gold Region | An Under Explored District

## Archean Lode Gold Mines Camps Central Canada



Limited exploration & historic mining district-wide at only shallow depths



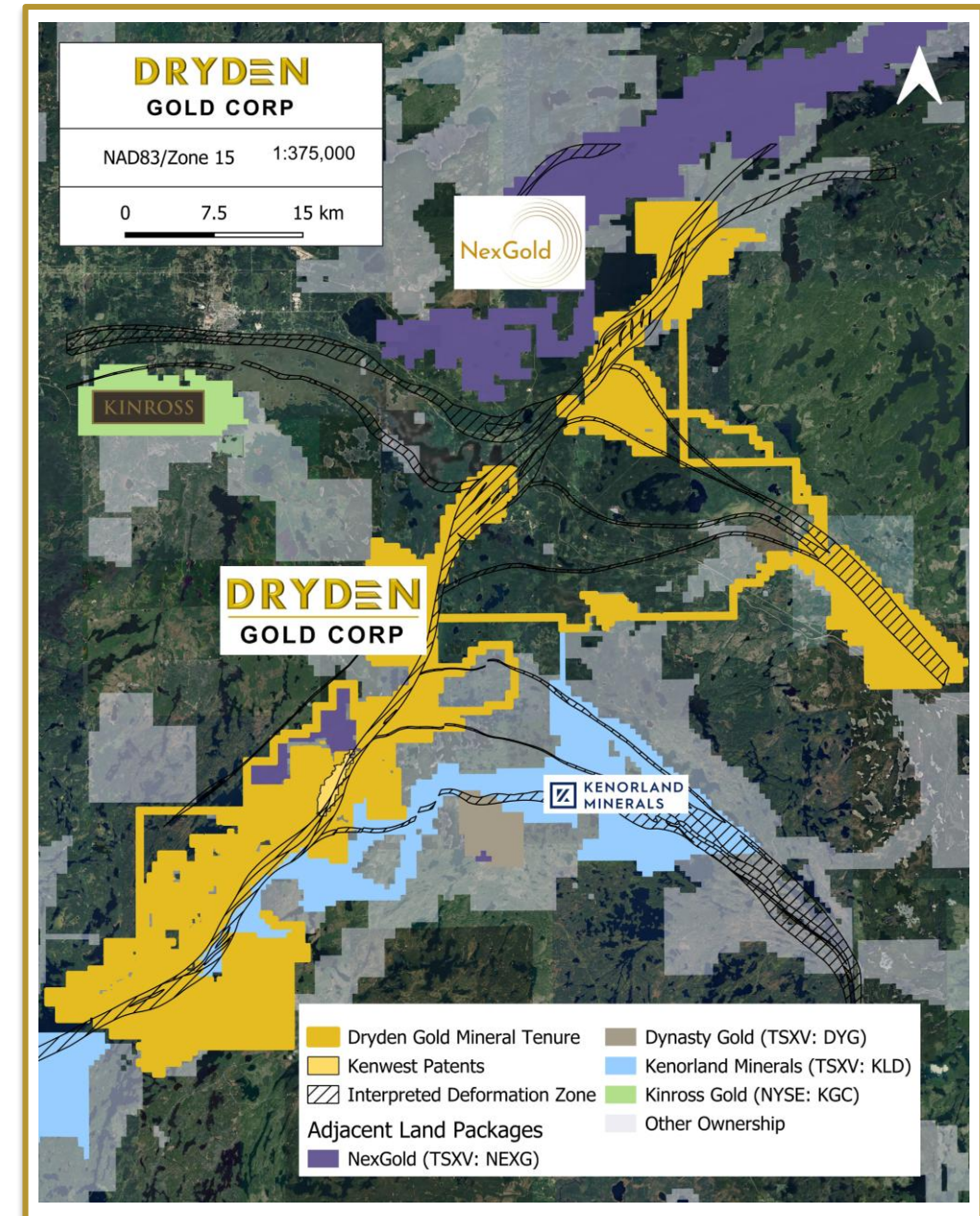


## Strategic Land Package

- ▲ Over 702 km<sup>2</sup> (70,250 hectares) consolidated & 100% owned by Dryden Gold Corp.
- ▲ Excellent infrastructure – Roads, power & labour
- ▲ 50 km strike covering regional gold bearing MDdz structure (Manitou-Dinorwic deformation zone)
- ▲ Two additional cross-cutting regional gold-bearing fault structures

## Strategic Exploration Method

- ▲ All oriented drill core to enhance structural interpretation
- ▲ Fully assayed drill core to define stacked structures in different host rocks
- ▲ Smaller drill passes, integrating new data for each phase insuring geological & structural controls go into targeting
- ▲ Year-round drilling at industry low cost of \$250/m (all in)



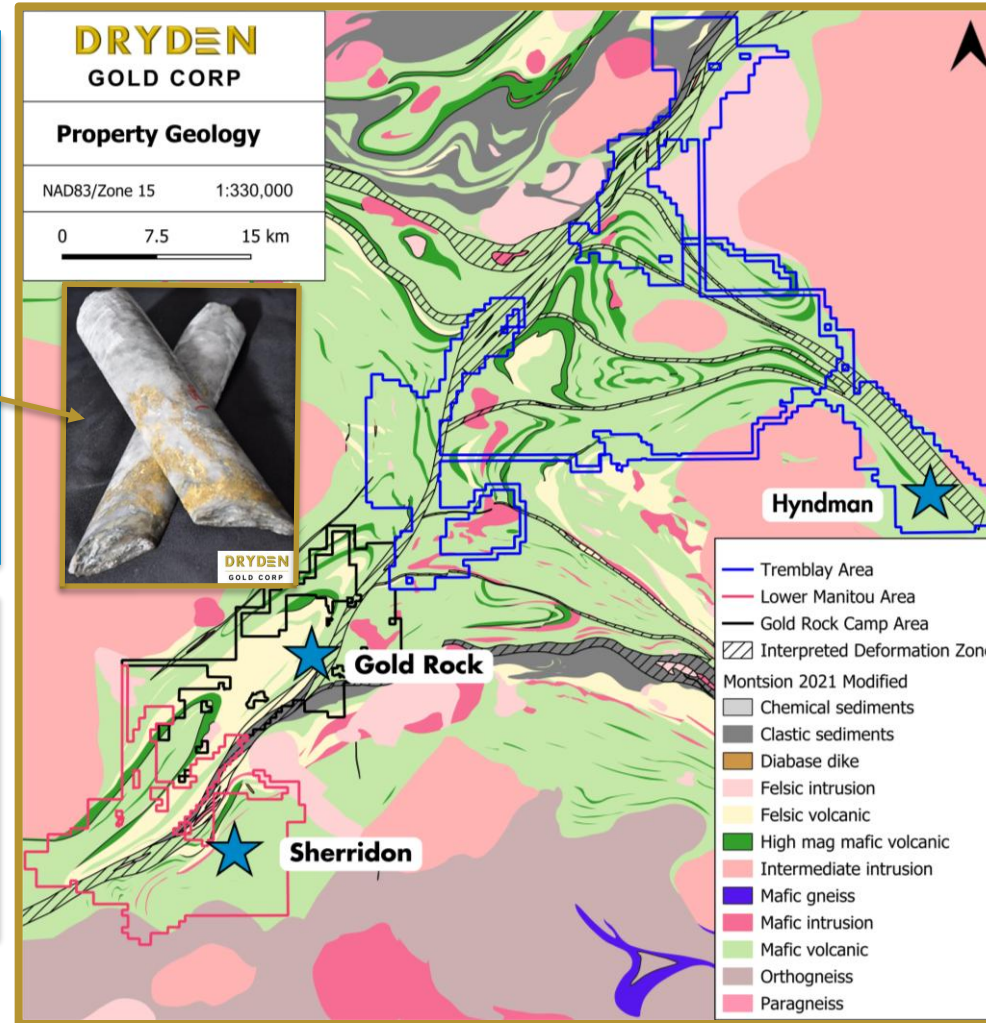
# District Scale | Near Surface High-Grade Gold Across Property

## Gold Rock Camp Drill Highlights

- ▲ 301.67 g/t over 3.90 meters  
*including 1,930.00 g/t over 0.60 meters*
- ▲ 30.72 g/t gold over 5.70 meters
- ▲ 15.17 g/t gold over 6.95 meters
- ▲ 15.40 g/t gold over 6.10 meters
- ▲ 26.11 g/t gold over 3.16 meters,  
*including 79.80 g/t gold over 0.33 meters*
- ▲ 3,497.0 g/t gold over 8.50 meters \*historic drill hole\*  
*including 53,700 g/t gold over 0.55 meters*

## Sherridon Drill Highlights

- ▲ 7.70 g/t gold over 3.00 meters \*historic drill hole\*  
*including 46.00 g/t gold over 0.50 meters*
- ▲ 15.40 g/t gold over 5.50 meters \*historic drill hole\*  
*including 83.10 g/t gold over 1.00 meters*



## Hyndman Field Samples

- ▲ 34.80 g/t gold grab sample 2024
- ▲ 13.00 g/t gold grab sample 2023
- ▲ 12.30 g/t gold grab sample 2023
- ▲ 10.90 g/t gold grab sample 2023
- ▲ 6.41 g/t gold grab sample 2024

## Sherridon Field Samples

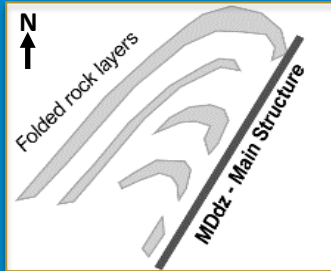
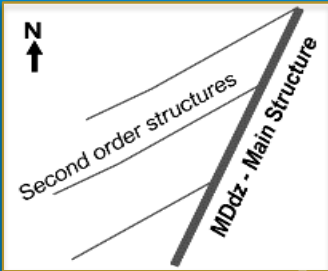
- ▲ 617.00 g/t gold grab sample (historic)
- ▲ 184.50 g/t gold grab sample (historic)
- ▲ 123.00 g/t gold grab sample (historic)
- ▲ 122.50 g/t gold grab sample (historic)



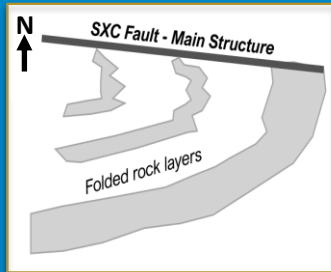
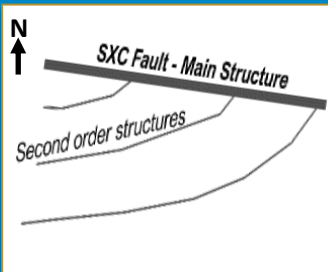
# Gold Rock Camp

## Similar Geological Setting to Red Lake

### Dryden Gold Corp. Gold Rock Area Geology



### Red Lake Mine Geology



Similar geological setting, rock types with regional folding and structural geometry

Favourable geological gold traps for high-grade gold

Various styles of gold mineralization

*Quartz veins w/ free gold, shears hosting gold, disseminated sulphides*

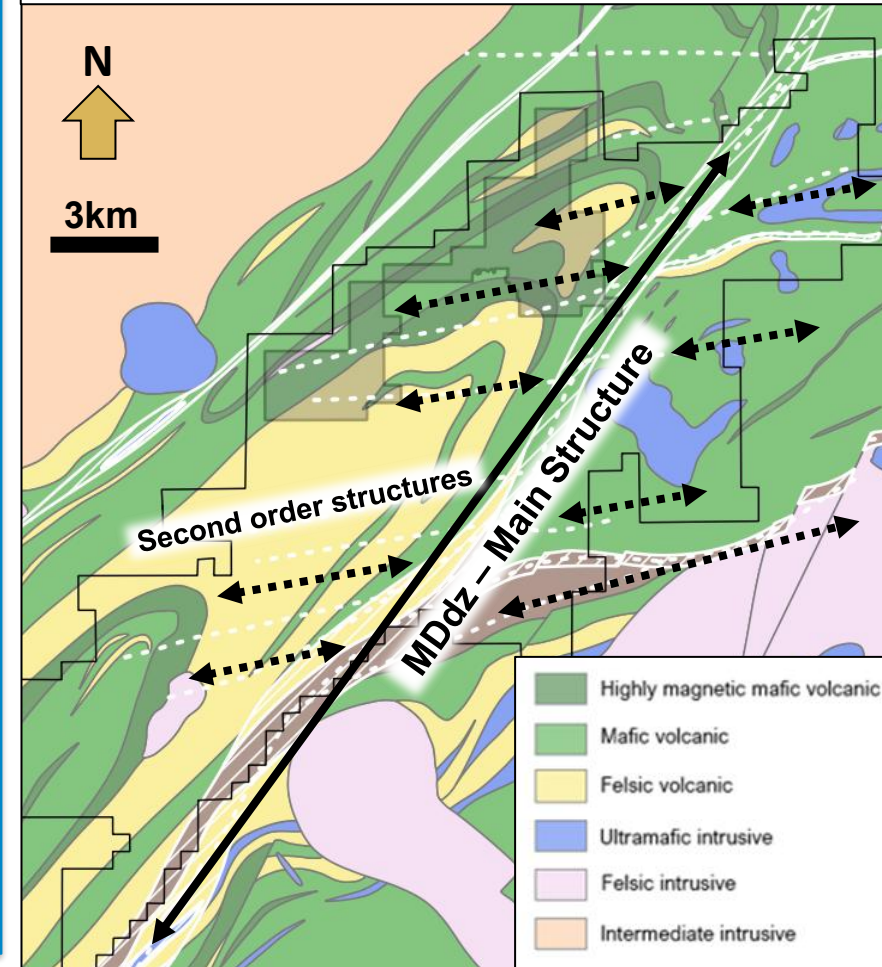
Very similar footprint at Red Lake and Gold Rock Camp

Stacked zones of mineralization in different structural planes at Red Lake & Gold Rock

Periodicity to these mineralized areas

Red Lake discovered through mineralization outcropping on surface like Gold Rock Camp

### Gold Rock Camp Geology



# 2025 | Fully Funded Exploration Objectives

## GOLD ROCK TARGET AREA

- 1 TEST STRUCTURAL INTERSECTIONS ALONG STRIKE ON **THE ELORA GOLD SYSTEM**
- 2 EXPAND **HIGH-GRADE MINERALIZATION** DOWN PLUNGE AT **THE JUBILEE ZONE**
- 3 EXPAND **THE ELORA GOLD SYSTEM** BY TESTING STACKED GOLD-BEARING STRUCTURES
- 4 EXPAND **THE BIG MASTER GOLD SYSTEM** BY TESTING STACKED GOLD-BEARING STRUCTURES

## REGIONAL EXPLORATION

- 1 DRILL **THE MUD LAKE TARGET AREA** TO TEST THE PERIODICTY IN **THE GOLD ROCK CAMP**
- 2 DRILL TEST **SHERRIDON** & CHANNEL SAMPLE **HYNDMAN** TO SHOW **DISTRICT-SCALE POTENTIAL**
- 3 MAP & SAMPLE ADDITIONAL TARGET AREAS ALONG 20KM STRIKE IN THE **GOLD ROCK CAMP**
- 4 CONDUCT A PROPERTY-WIDE SOIL TILL SUBSTRATE SAMPLING PROGRAM



**DRYDEN**  
GOLD CORP



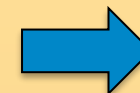


# Gold Rock | Targeting High-Grade Structures

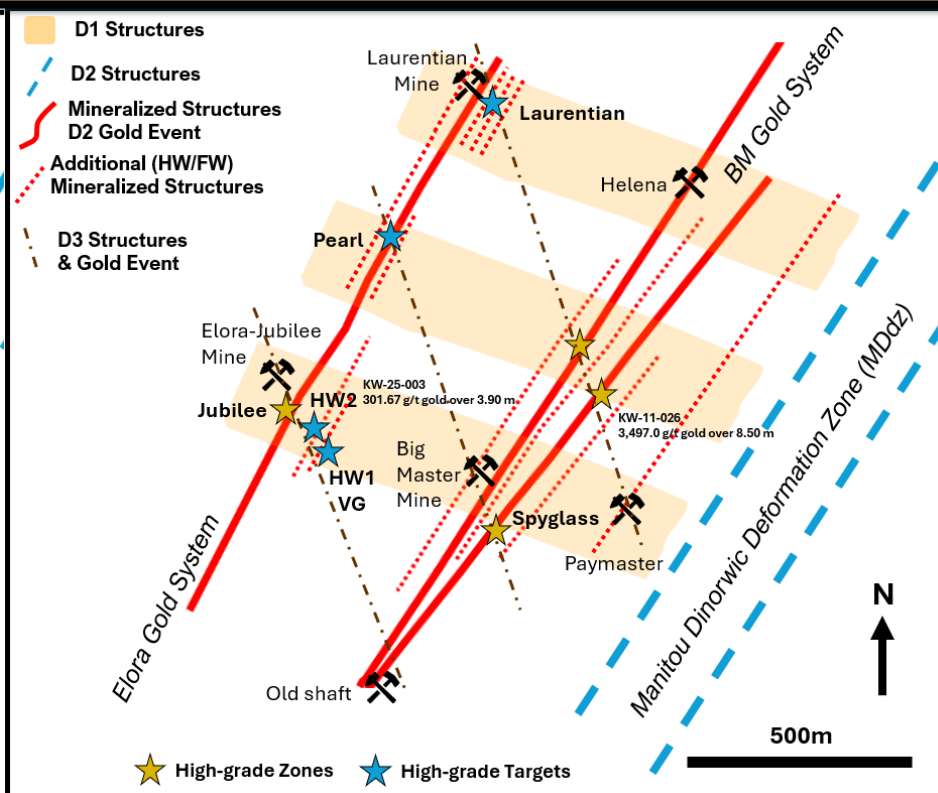
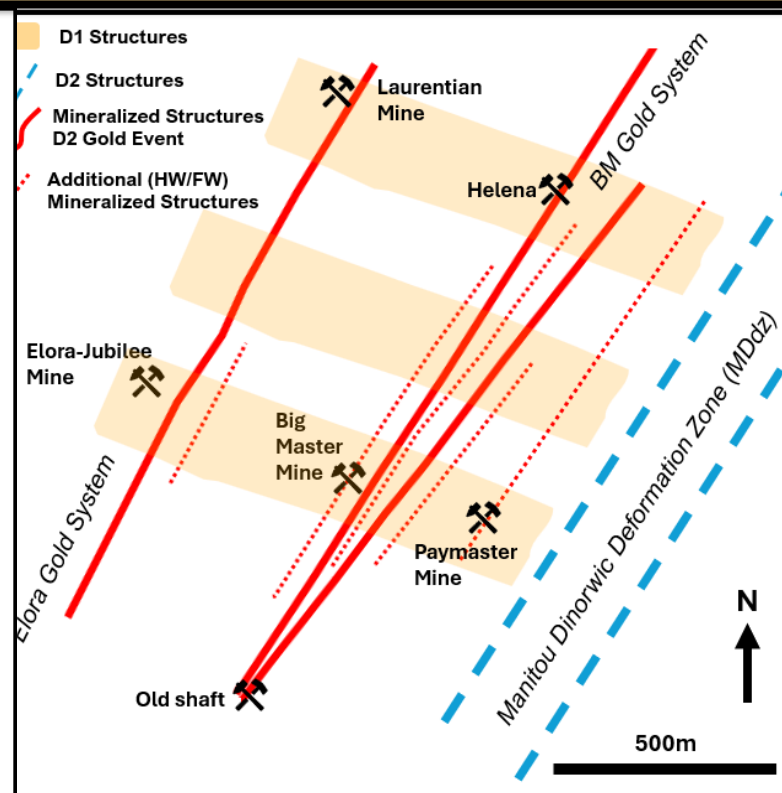
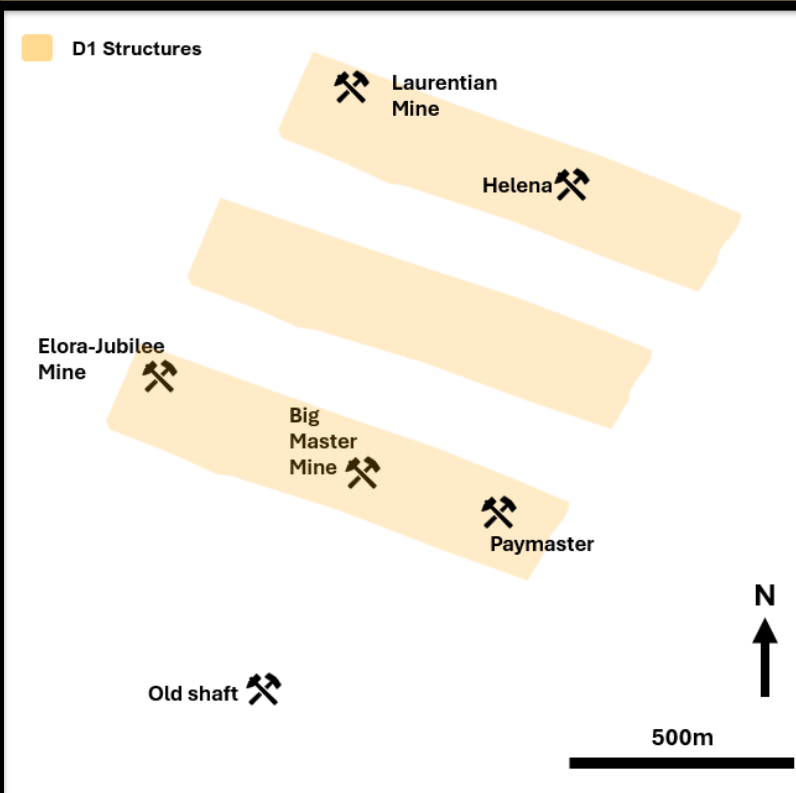
First Deformation Event



Second Deformation  
& Gold Mineralization Event



Third Deformation  
& Gold Mineralization Event



Note - figures simplified cartoon maps of the interpreted deformation and mineralization history

# Gold Rock Target Area | Multiple Stacked Mineralized Structures

## ▲ Big Master intersected HW & FW structures

- ▲ (HW) KW-23-007 34.00 g/t gold over 0.80 meters
- ▲ (FW) KW-23-007 20.93 g/t gold over 0.69 meters  
*Including 36.70 g/t gold over 0.39 meters*
- ▲ (HW) KW-24-009 0.86 g/t over 2.84 meters
- ▲ (FW) KW-24-009 1.38 g/t gold over 6.65 meters  
*Including 10.50 meters over 0.80 meters*

## ▲ Jubilee new HW structures

- ▲ KW-25-003 301.67 g/t over 3.90 meters  
*Including 1,930 g/t gold over 0.60 meters*
- ▲ VG on DGR-25-011 & DGR-25-012

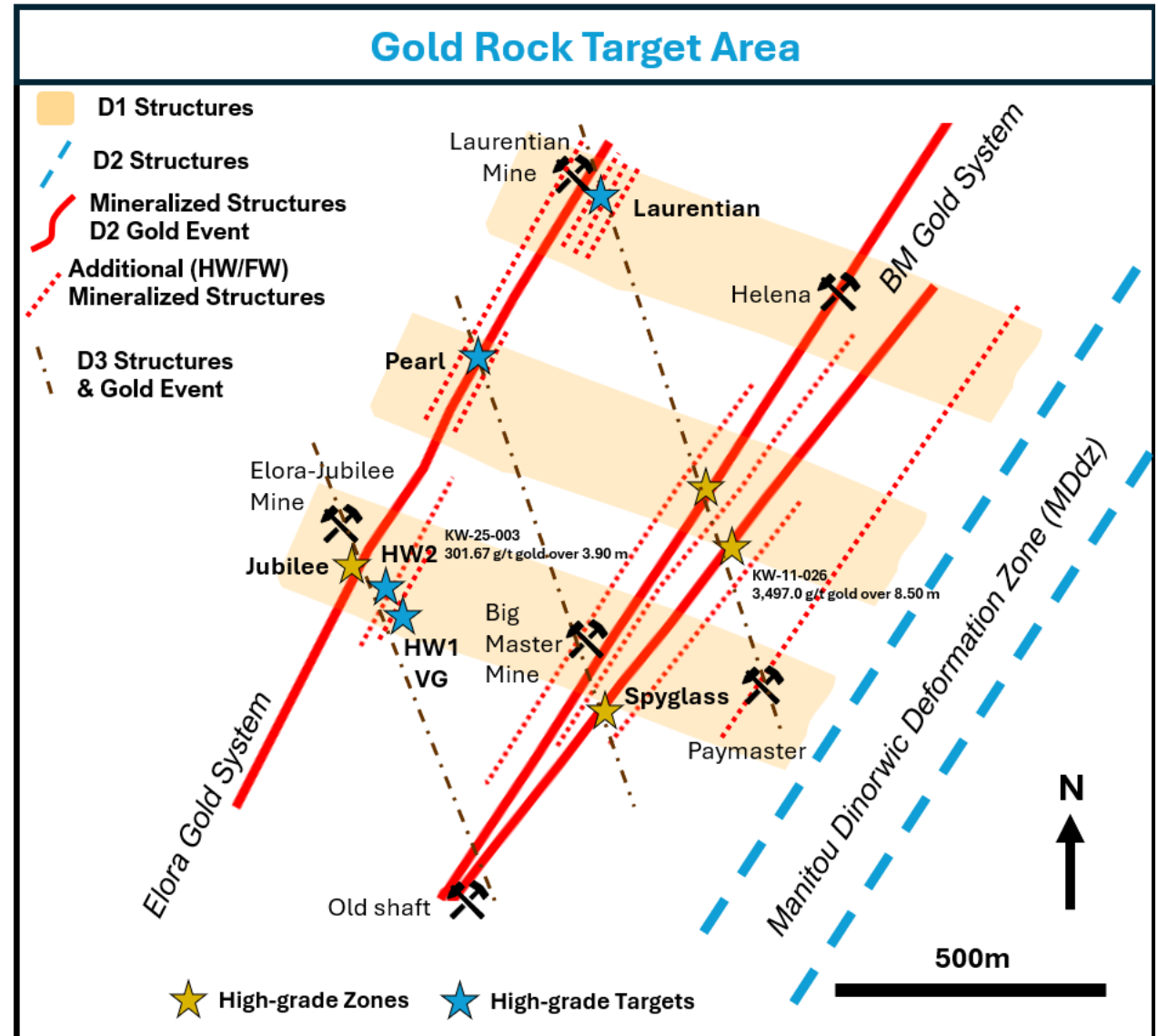
## ▲ Laurentian - multiple stacked structures

## ▲ Pearl new HW & FW structures

- ▲ DGR-25-007 2.26 g/t over 8.80 meters  
*Including 7.12 g/t gold over 2.60 meters  
and 25.80 g/t gold over 0.60 meters*
- ▲ (HW) DGR-25-007 0.63 g/t gold over 14.60 meters
- ▲ (HW) DGR-25-006 1.52 g/t gold over 9.60 meters


**DRYDEN**

GOLD CORP







# Elora Gold System | Multiple Stacked Mineralized Structures




**Jubilee HW2**



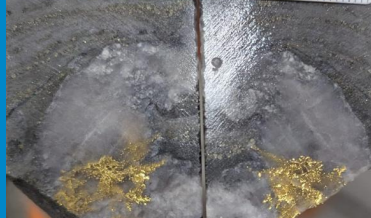
**Pearl Target**




**DGR-25-007**  
2.26 g/t gold over 8.80 meters including 7.12 g/t gold over 2.60 meters and 25.80 g/t gold over 0.60 meters




**KW-25-003**  
301.67 g/t gold over 3.90 meters including 1,930 g/t gold over 0.60 meters




**Visible Gold in DGR-25-011**



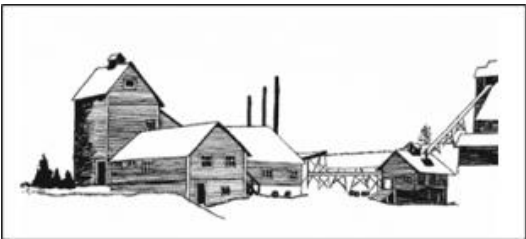
**Visible Gold in DGR-25-012**



**Jubilee HW1**

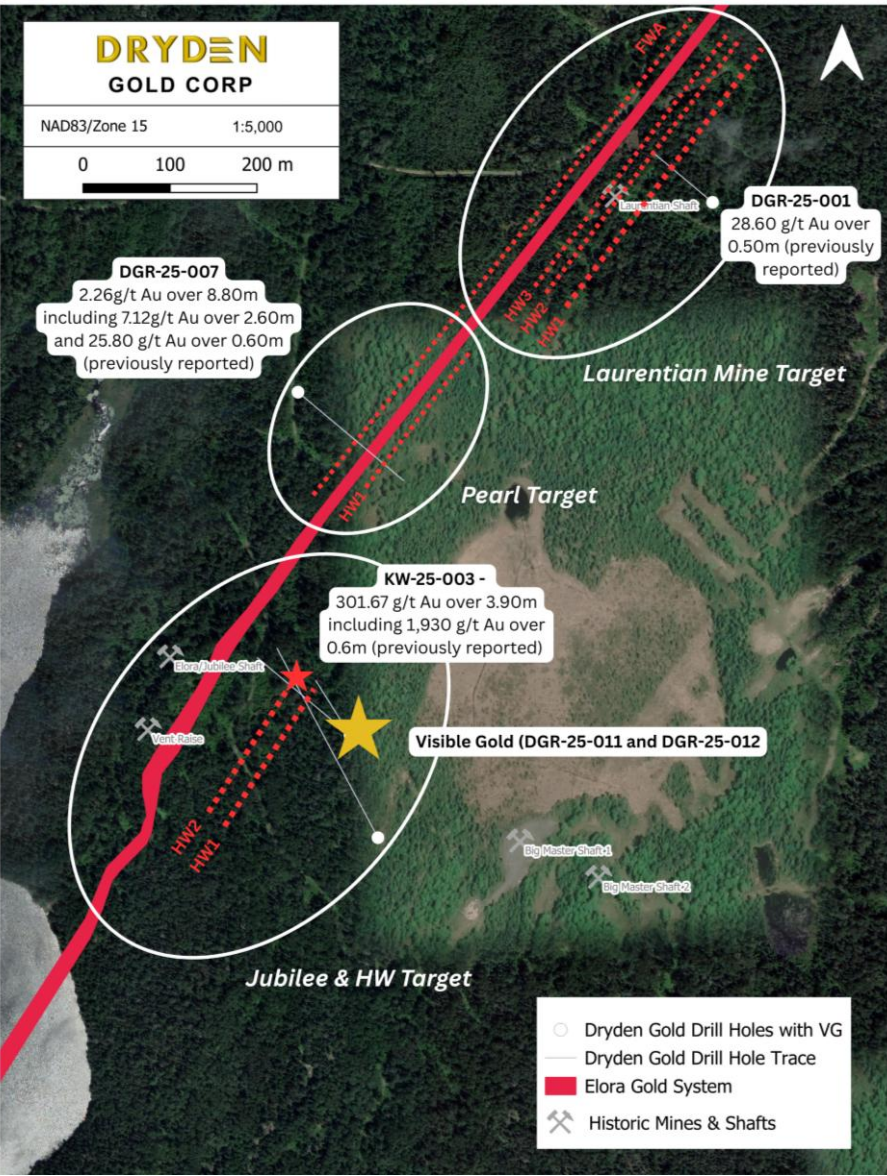


**Assays Pending**



**Laurentian Gold Mine**  
with average grade of  
**14 g/t gold** and mined to only  
**140 meters.**

**DRYDEN**  
GOLD CORP



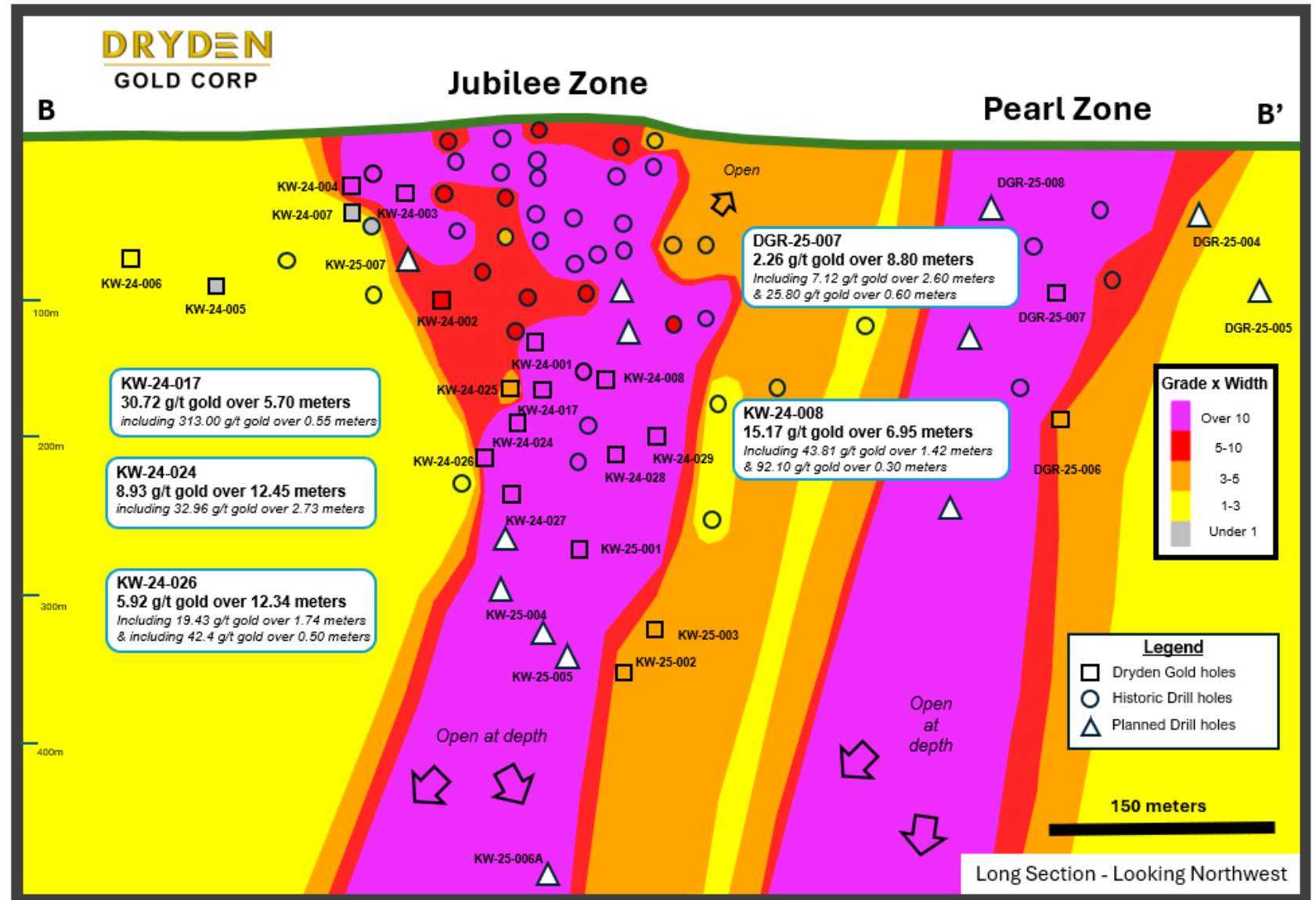
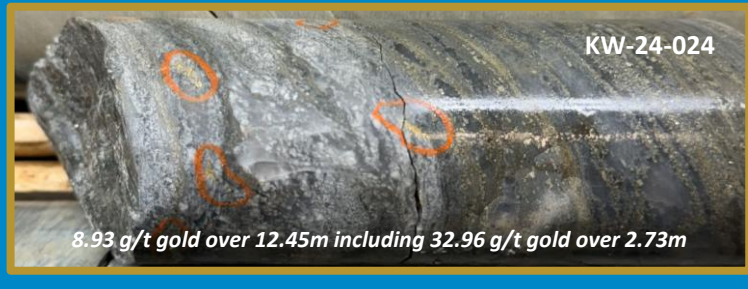


# Elora Gold System | Jubilee Zone & Pearl Zone

## Expanding Strike & Depth



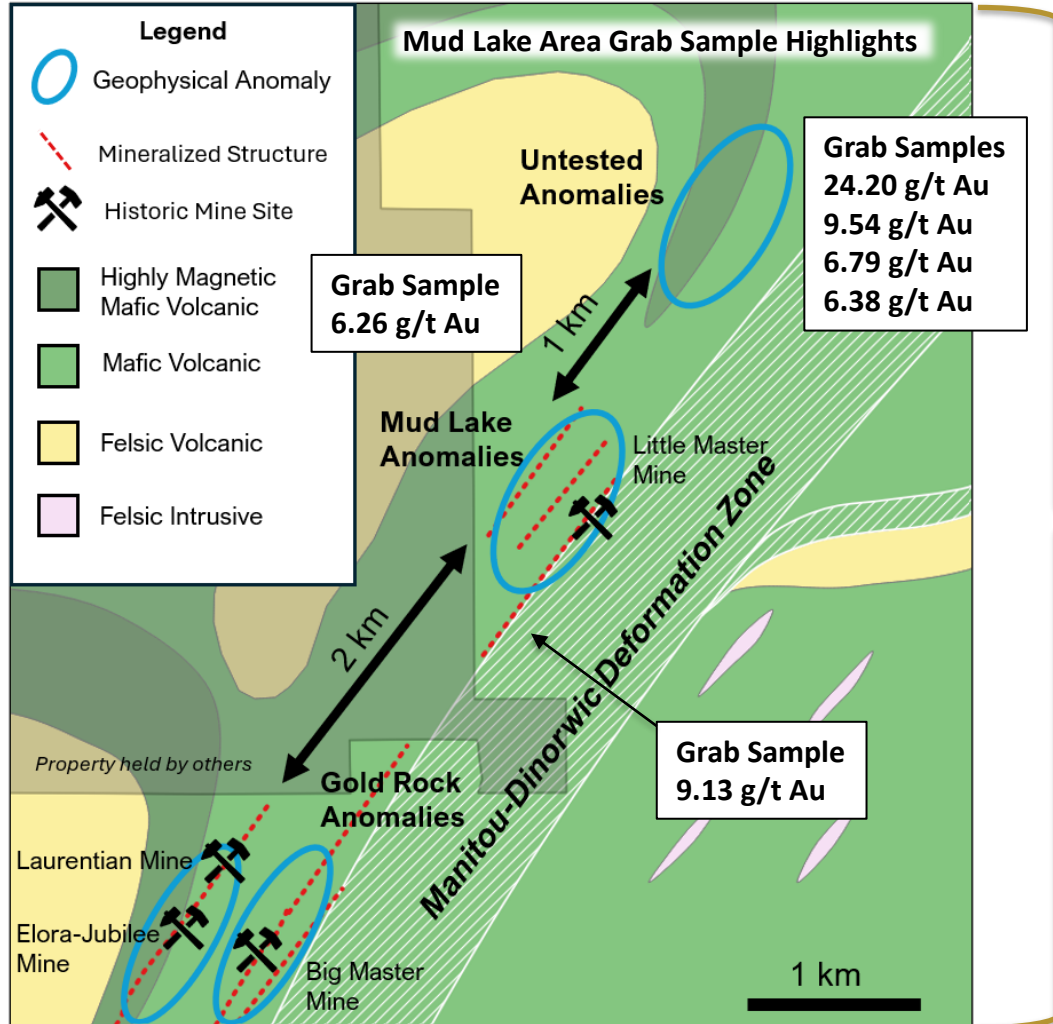
- Targeting sheared basalt with sulphide mineralization & quartz stringer veins
- Testing gold mineralization continuity down plunge and along strike



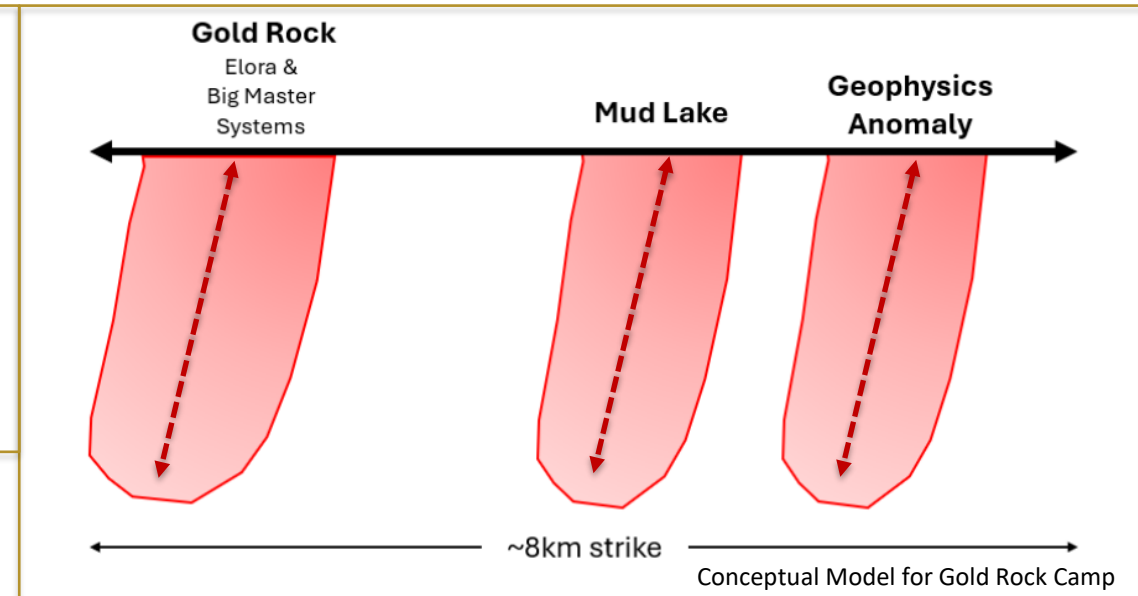


# Gold Rock | Periodicity | Another Comparison to Red Lake

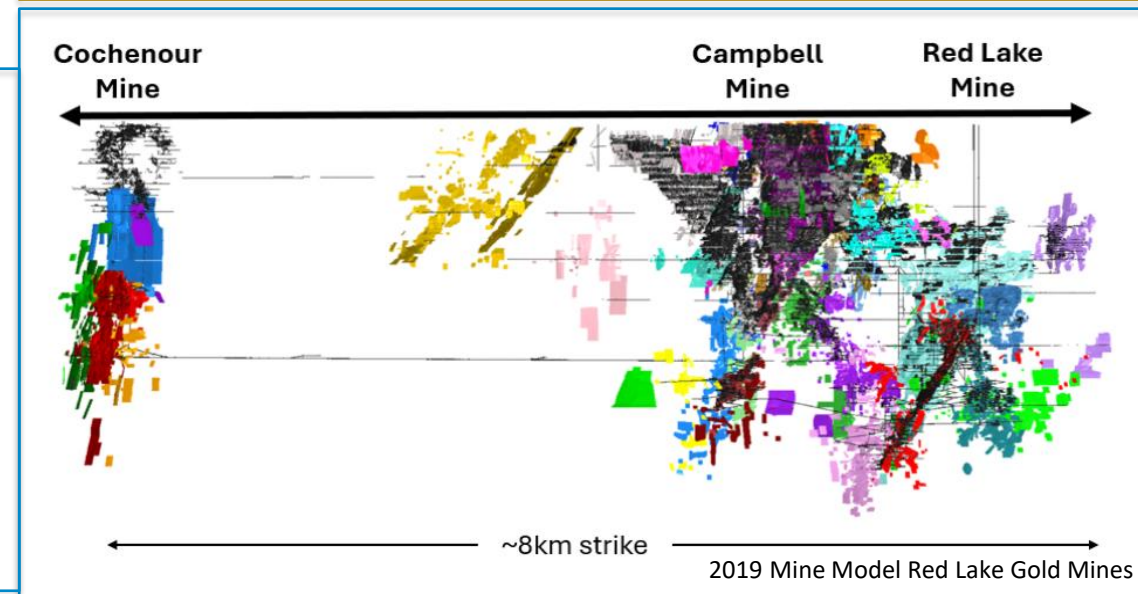
**Gold Rock Trend Map** - Gold Rock, Mud Lake Area and Untested



**Long Section**  
from  
Gold Rock  
to  
Mud Lake  
to  
Untested  
Geophysics  
Anomalies



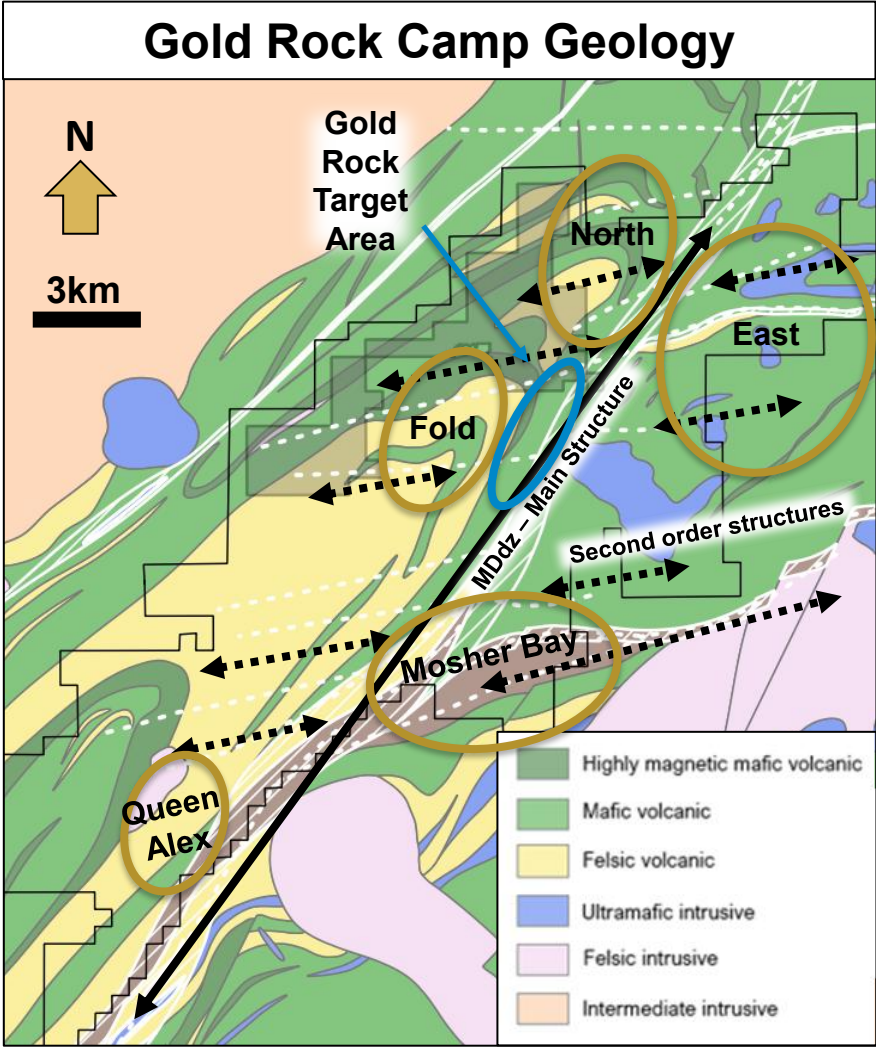
**Long Section**  
from  
Red Lake  
Mine  
to  
Campbell  
Mine  
To  
Cochenour  
Mine



# Dryden Gold's Resource Pipeline

- 2025 Exploration Emphasis on **Gold Rock Camp** Targets - **Drill Permitted** for Northern Extensions
- Sherridon & Hyndman**- Two Regional Target Areas Identified and **Now Permitted** for Further Field Work & Drilling During 2025 Campaign

Regional (District) Target	Conceptual Target	Early-stage Target	Identified Target	Follow Up Target	Drill Ready Target	Early Resource Definition
Sandybeach MDdz	Snowfall Anomalies	Gold Rock West	Gold Rock North <i>untested anomalies</i>	Hyndman Channel Sampling	Sherridon	Elora Gold System
Avery MDdz		Gold Rock Selby	Gold Rock East <i>Goldcliff</i>	Hyndman Untested Anomalies	Gold Rock North <i>Mud Lake</i>	Elora Extensions
Avery Wabigoon Splays		Gaffney Patents	Gold Rock South <i>Queen Alexandra</i>	Gold Rock South <i>Mosher Bay</i>	Gold Rock Fold <i>Trafalgar Bay</i>	Big Master Southern Extensions
Conceptual		Grassroots		Brownfields		Resource

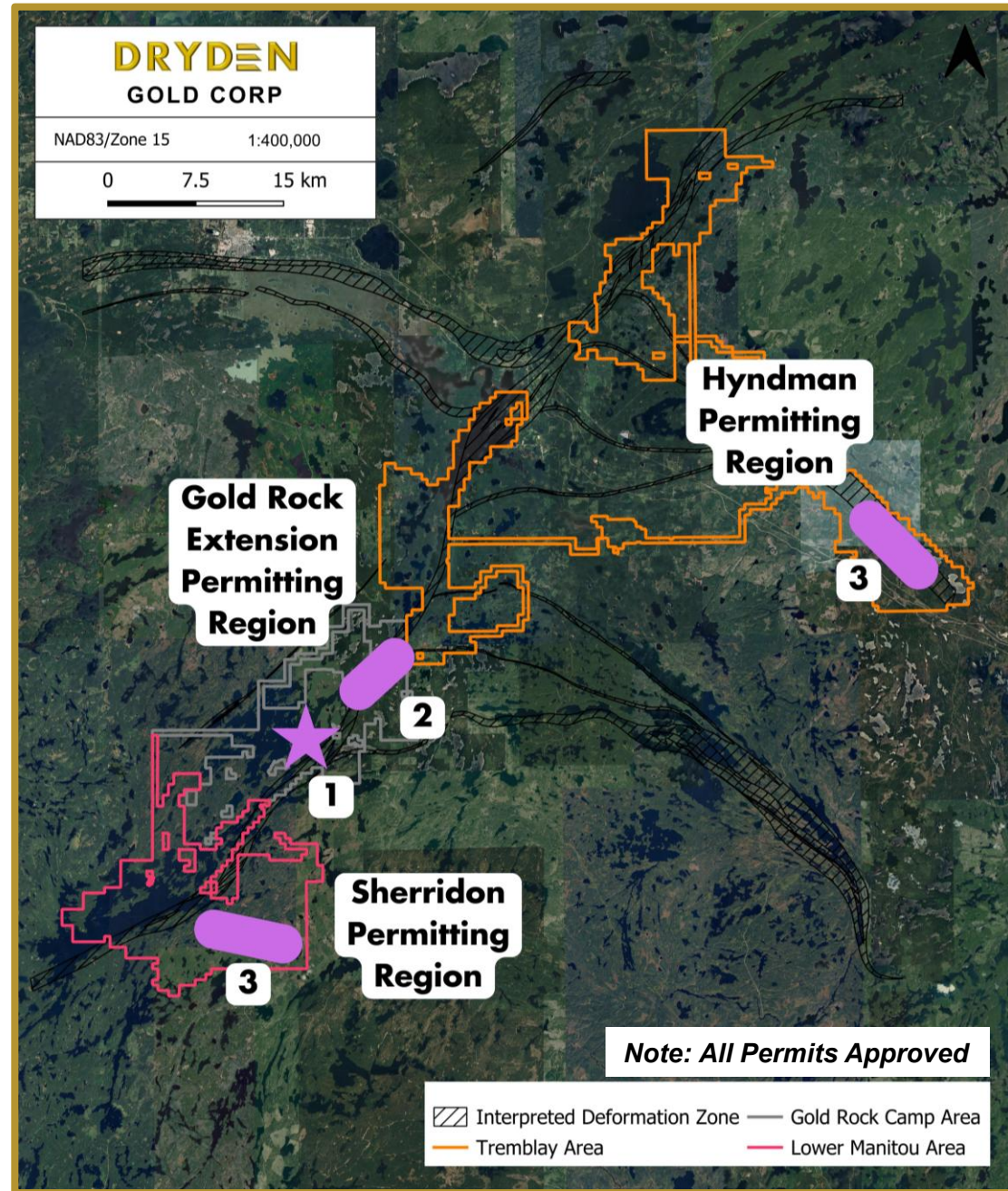




# 2025 Regional Exploration

## Regional Exploration Targeting New Discoveries

- ▲ Highly **prospective** land package
- ▲ **Numerous** Regional targets
- ▲ Structural Synthesis – Tectonic Evolution
- ▲ **District Scale Potential**
- ▲ Multiple Deposit Models
  - ▲ **Sherridon** (Ultramafic Host)
  - ▲ **Hyndman** (Granodiorite Host)



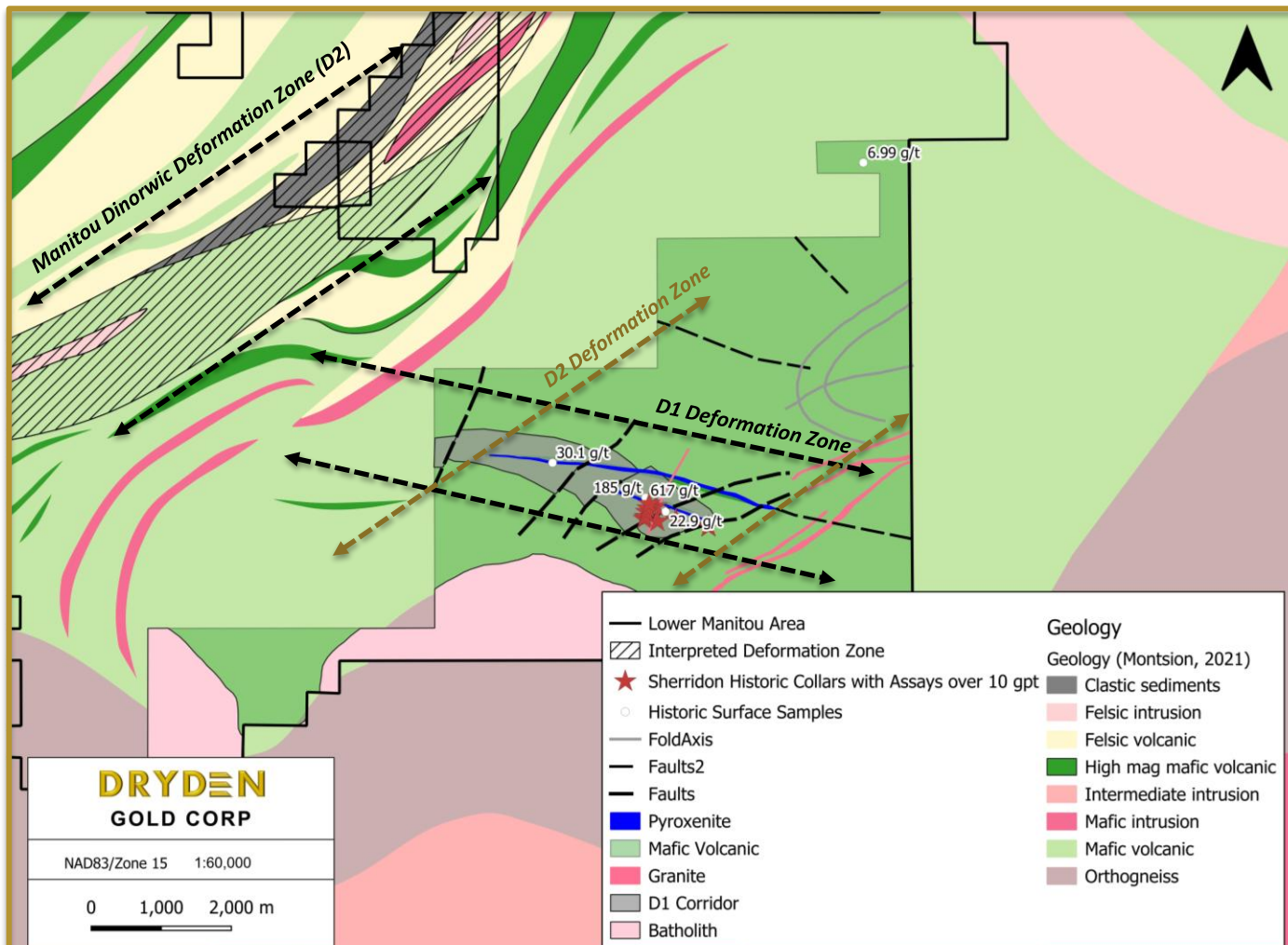
# Sherridon | Regional Exploration

## Assay Highlights:

- ▲ **617.00 g/t gold** surface sample
- ▲ Several surface samples over **100.00 g/t gold**
- ▲ Hole SH-12-25 **15.40 g/t gold** over 5.50 m including 83.70 g/t gold over 1.00 m

- ▲ It is hosted in mafic volcanic along a D1(east-west) deformation zone within a region that hosts D2 oriented faulting and D1 oriented pyroxenite dykes
- ▲ The pyroxenite dykes appear closely associated with mineralization and are likely infilling the same fluid pathways that introduced the gold.

**DRYDEN**  
GOLD CORP



**Mapping & geological modeling completed in 2024**  
**Initial drill program is scheduled for June 2025.**

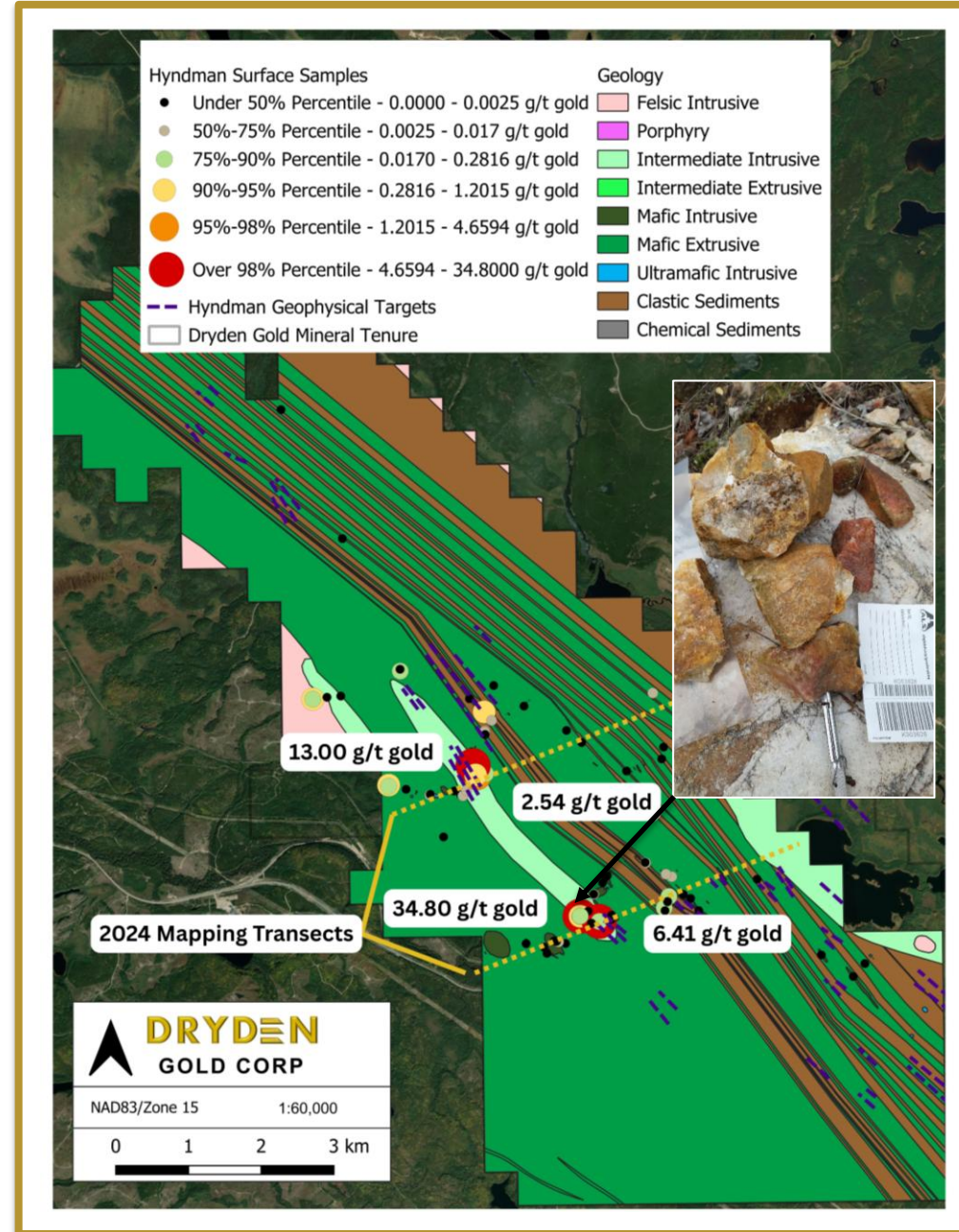


# Hyndman | Regional Exploration

- Field programs in 2024 & 2023 discovered new gold showings with 19 samples returning gold values higher than 1.00 g/t gold and 6 samples returning grades over 5 g/t gold.

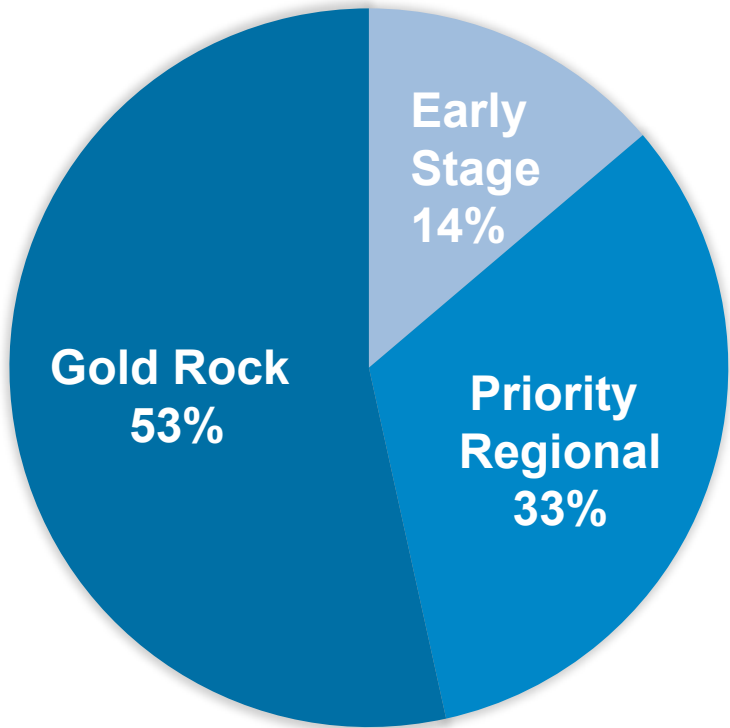
- Planned field program for 2025 includes
  - Further detailed mapping of Hyndman with transects based on geophysical targets to the northeast and southwest of the 2024 work area.
  - Channel sampling over the most prospective areas from the 2023, 2024 and 2025 work programs

- The objective for the Hyndman Project is to advance it to a drill-ready stage. Permits have been granted, with drilling targeted for Q4 2025.

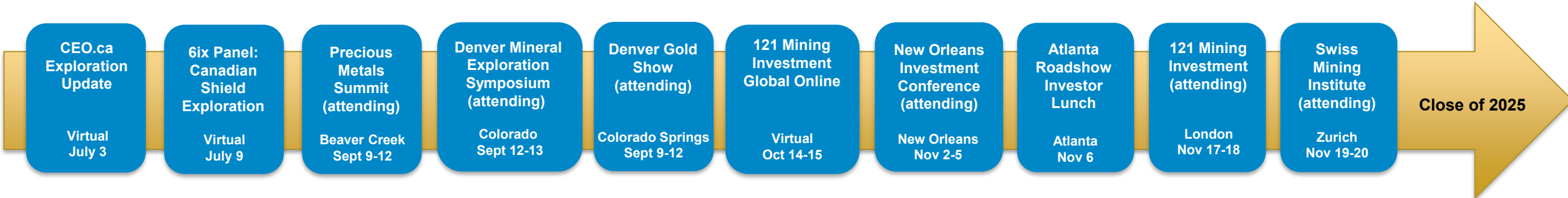


# Exploration Budget | Marketing

Item	Property	Cost (\$CAD)
LiDAR	All properties	\$100,000
Till/Soil Geochemical Survey	All properties	\$700,000
Geophysics 3D Inversion	Priority Regional Targets <i>Sherridon, Gold Rock expanded, other</i>	\$250,000
Mapping & Sampling	Priority Regional Targets <i>Gold Rock, Hyndman, Sherridon</i>	\$700,000
Channel Sampling	Priority Regional Targets <i>Gold Rock, Hyndman, Sherridon</i>	\$150,000
Drilling	Gold Rock	\$1,500,000
Drilling	Gold Rock Extension	\$1,600,000
Drilling	Priority Regional Targets <i>Gold Rock, Hyndman, Sherridon</i>	\$800,000



Total 2025 Funded Exploration Budget 5.8 M includes \$860K in Q4 2024





# Why Dryden Gold?

- ▲ The Property
- ▲ The Team
- ▲ The High-Grade Gold
- ▲ The Geology
- ▲ The Jurisdiction
- ▲ The Infrastructure
- ▲ The Shareholders

## With Four Clear Catalysts to Create Shareholder Value in 2025

- ▲ Expanding Gold Rock Target Area Along Strike with Multiple Stacked Gold-bearing Structures
- ▲ Potential to Prove Periodicity in the Gold Rock Camp at Mud Lake
- ▲ Potential for New Discovery at Sherridon
- ▲ Potential for New Discovery at Hyndman

**DRYDEN**

GOLD CORP







# DRYDEN

---

## GOLD CORP

TSXV: DRY | OTCQB: DRYGF  
DRYDENGOLD.COM

### Contact:

**Trey Wasser** CEO & Director  
+1 (940) 368-8337  
twasser@drydengold.com

**Maura Kolb** President & QP  
+1 (807) 632-2368  
mjkolb@drydengold.com



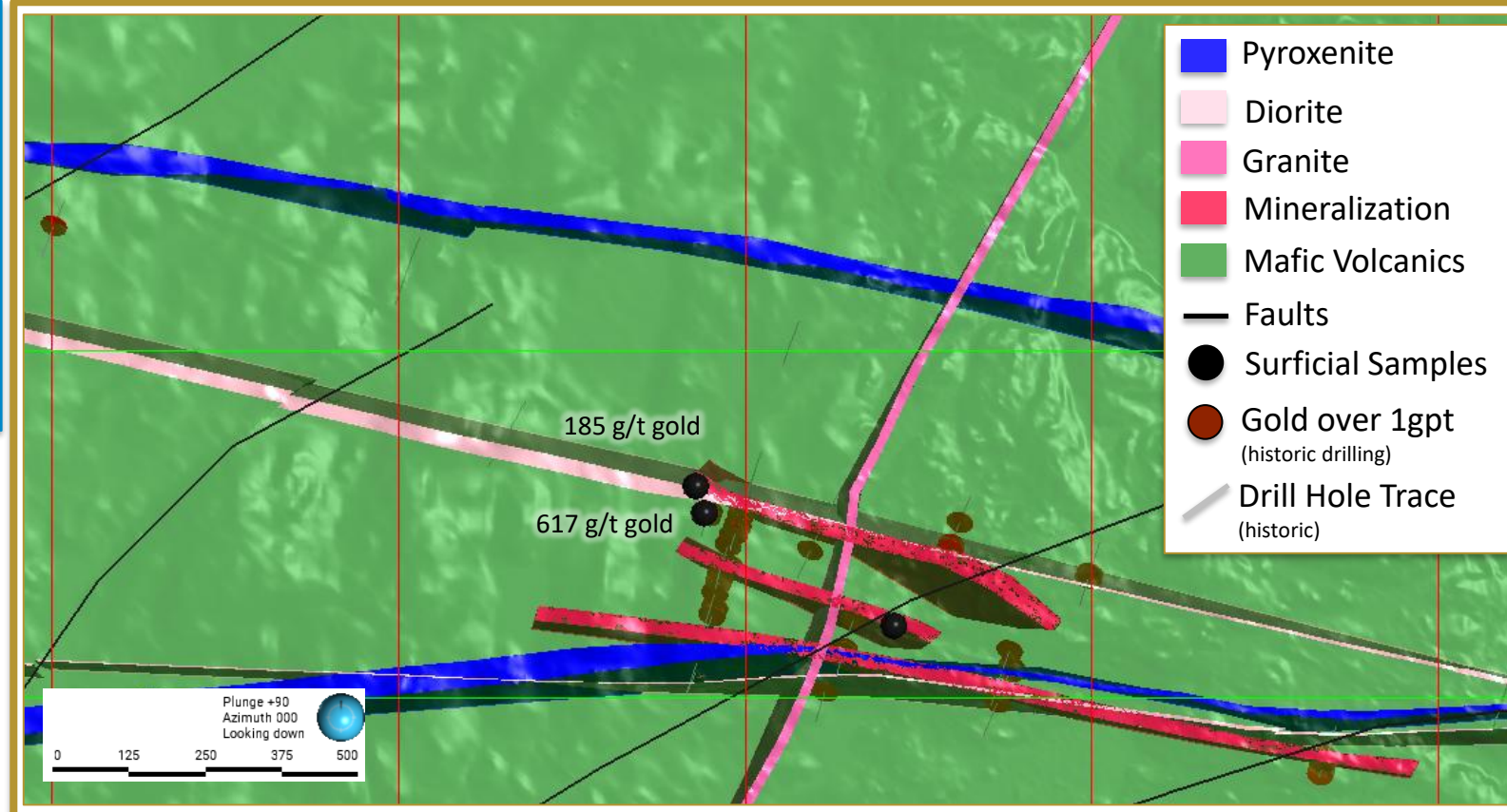


# Sherridon | Regional Exploration

## ▲ Highlights:

- ▲ **617.00 g/t gold** surface sample
- ▲ Several surface samples over **100.00 g/t gold**
- ▲ **15.40 g/t gold** over 5.50 meters including **83.70 g/t gold** over 1.00 meters in drill hole SH-12-25

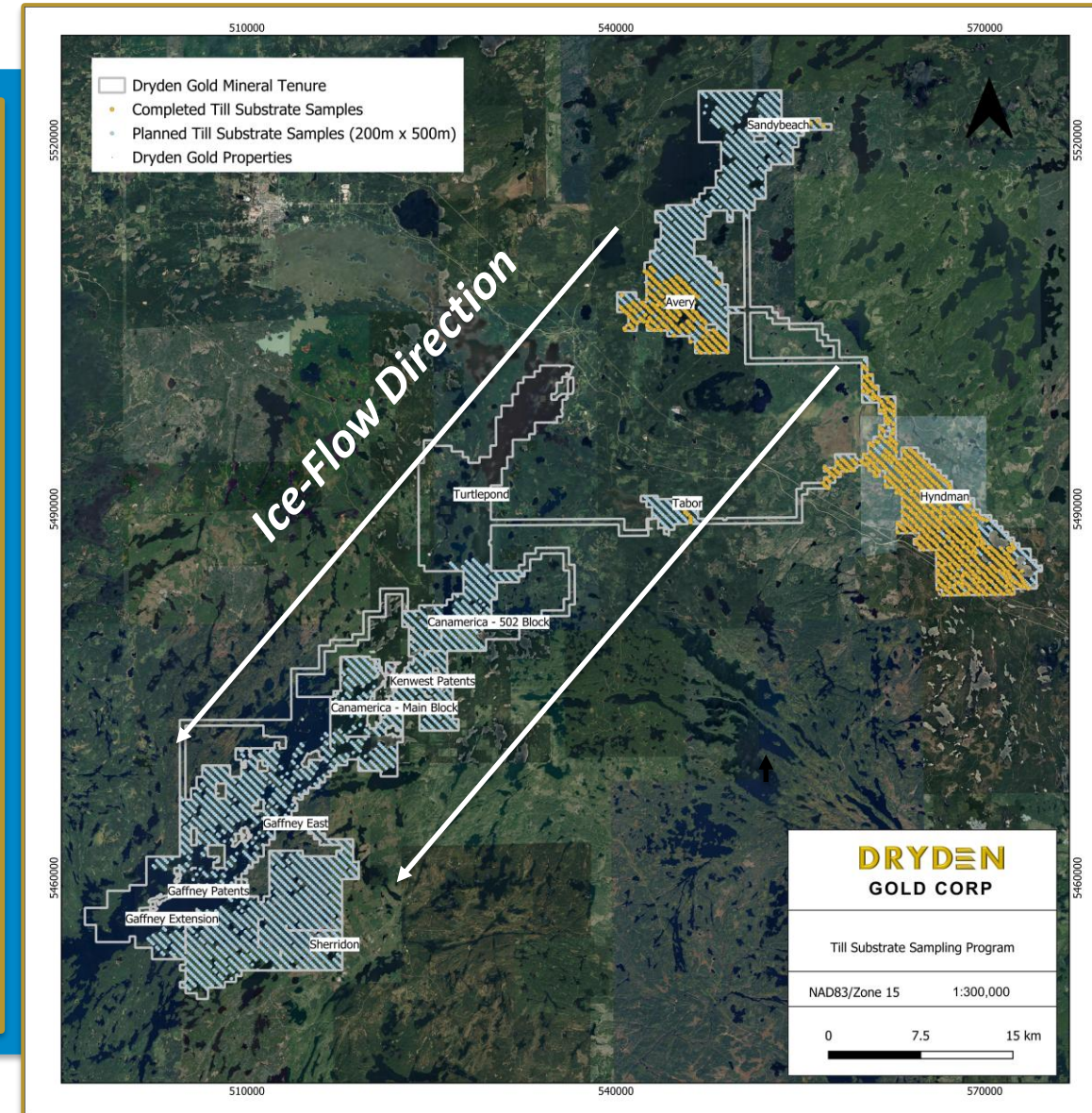
- ▲ Mineralization concentrated at intersections between D1 (E-W), D2 (NE/SW) and D3 (N-S) structures.
- ▲ Following the 2024 mapping and geological modeling program, a drill program is scheduled to start in summer 2025.



- ▲ Exploration drill permits have been approved for Sherridon with mobilization notice given to First Nations groups

# Regional Exploration | Till Substrate Sampling Program

- ▲ Dominant ice flow direction to the southwest with only one main flow noted in both academic papers and in field mapping
- ▲ Focused on sampling B-horizon or C-horizon developed on a till substrate
- ▲ Glaciofluvial samples being collected where needed but noted as these will have to be dealt with separately in interpretation.
- ▲ Planned 200m spaced samples along 500m spaced lines for a total of approximately 4,500 samples. LiDAR was used for helping place appropriate samples.
- ▲ Samples will be sieved to <63 micro fraction and a super-trace Au + multi-element package ([ALS - AuME-ST43](#)) to detect trace/pathfinder elements.
- ▲ The 2025 work plan is to complete this sample grid with a potential 2026 follow up program focusing on tighter grid spacing in areas of interest and/or heavy mineral concentrate samples (HMC).





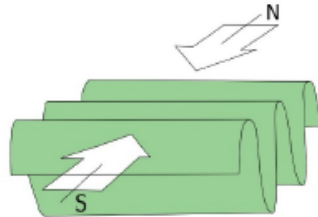
# Gold Rock | Targeting High-Grade Structures

## Stage #1

Deformation events shaped the **geometries** at Gold Rock and the emplacement of **Gold**

**D1** - The first phase of deformation created **folding** and **~east-west trending structure**

**D1** – Preparation of rocks for future mineralization through **alteration** and **early mineralization** in some areas



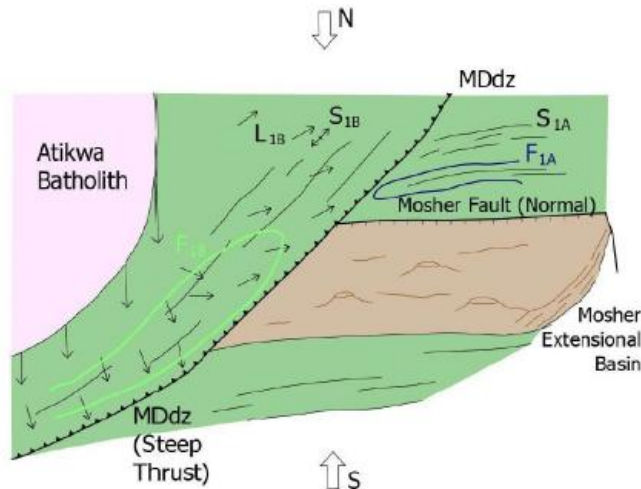
# Gold Rock | Targeting High-Grade Structures

## Stage #2

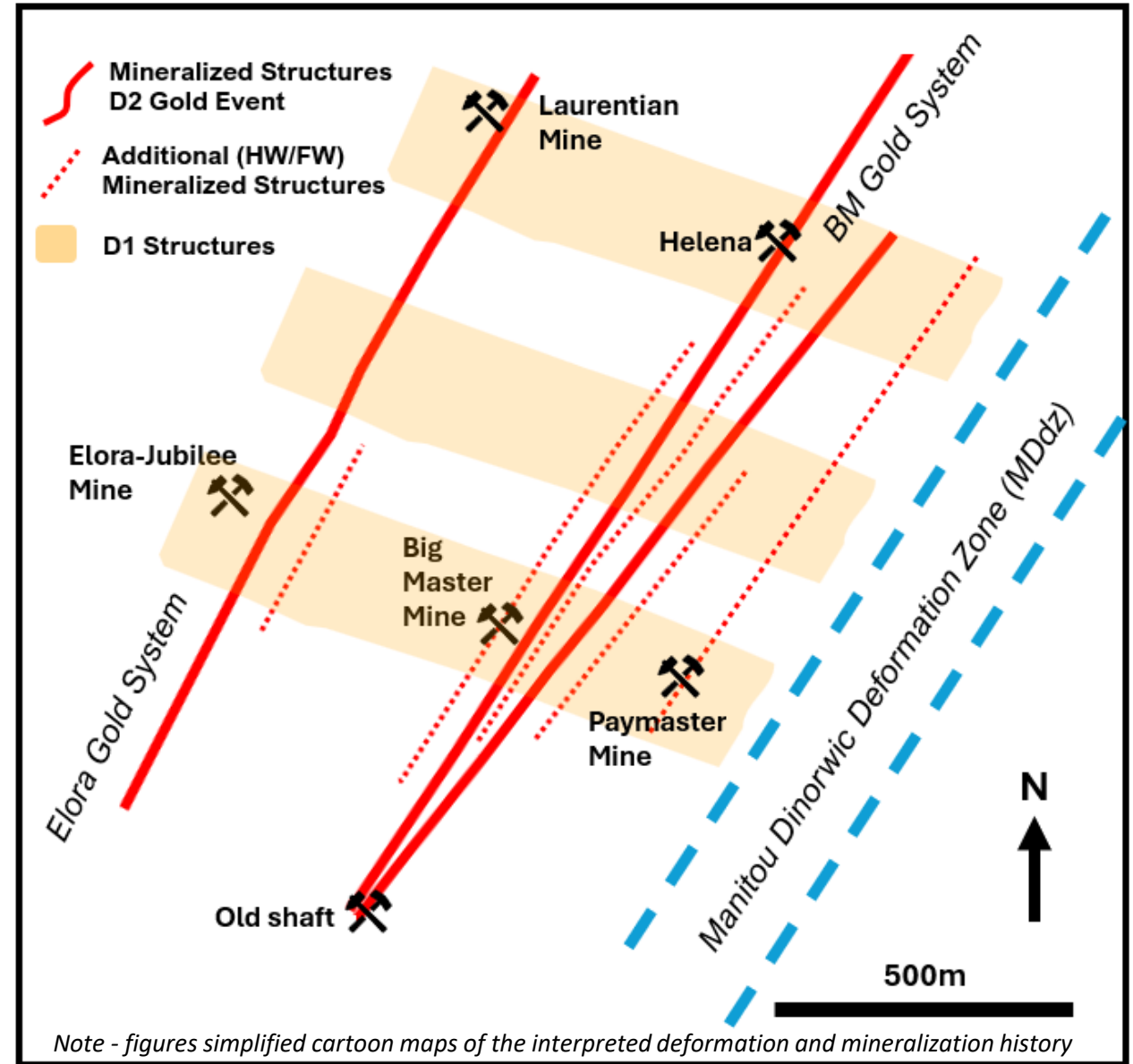
**D2** - The second phase of deformation created  
**Manitou Dinorwic deformation zone (MDdz)**  
**Northeast trending structures**

**D2 – Gold Mineralization** along Northeast  
trending **shear zones** and **veins structures**  
**Elora Gold & Big Master Gold Systems**

Continent-Arc  
Collision  
Peak Metamorphism  
Local Extension



**DRYDEN**  
GOLD CORP





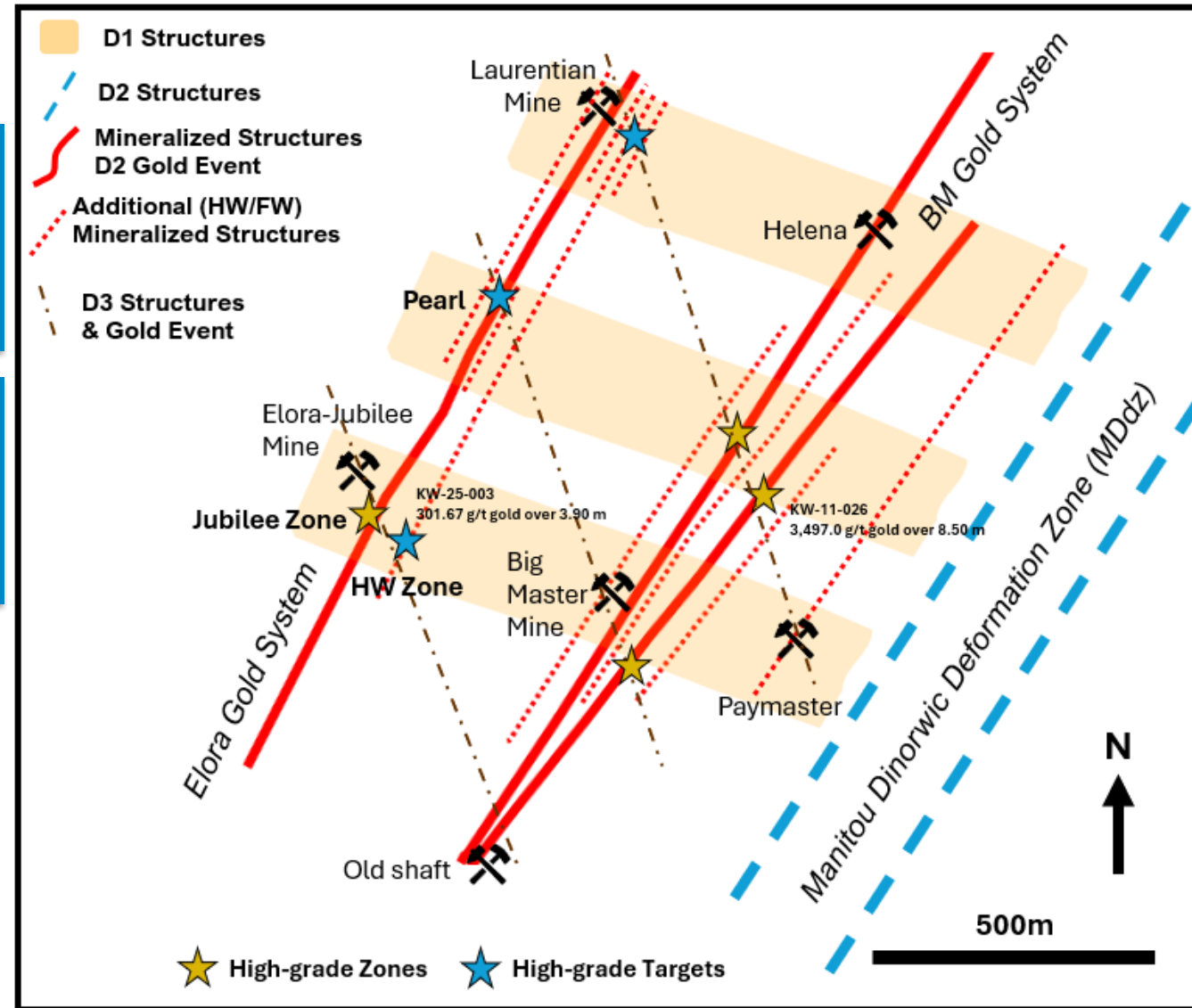
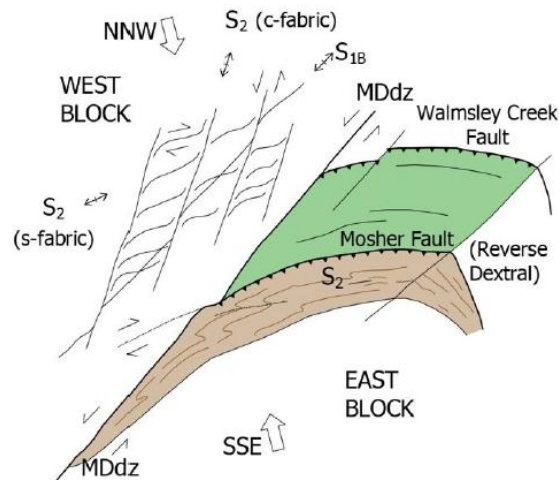
# Gold Rock | Targeting High-Grade Structures

## Stage #3

**D3** - The third phase of deformation created S-C fabric with the  
~ **North-south structures**

**D3** – **Gold Mineralization** in this phase reused previous structures and localized high-grade new ~**North-south structures**

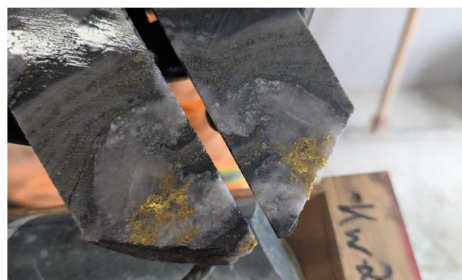
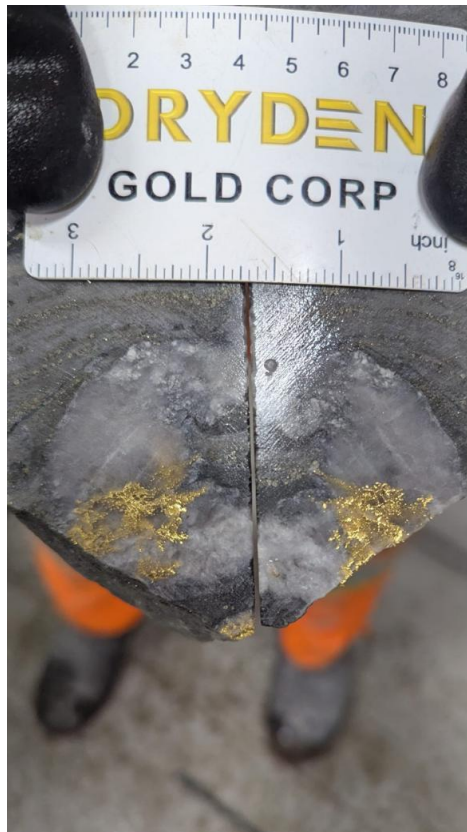
Sinistral Strike-slip  
Basin Closure  
Creation of S-C Fabric



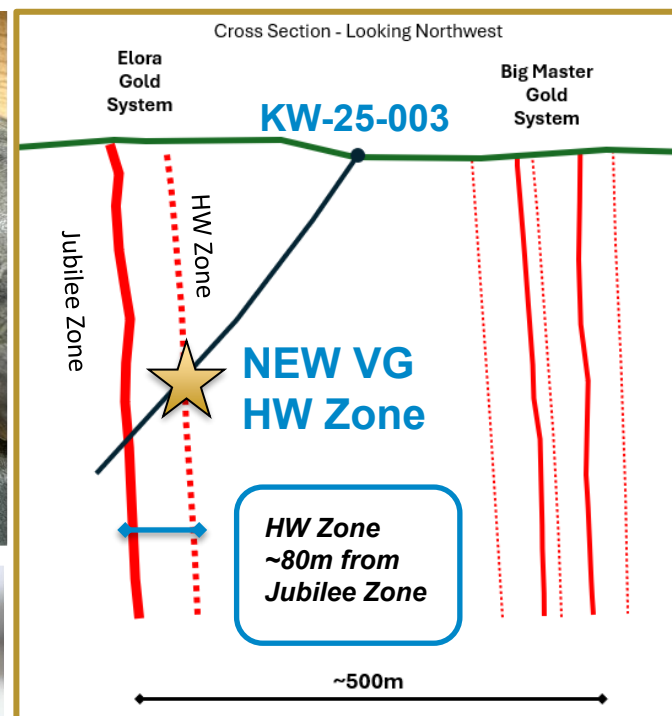
Note - figures simplified cartoon maps of the interpreted deformation and mineralization history

# Elora Gold System | NEW HW Mineralized Structure

## NEW Stacked Gold-Bearing Structures



### Cross Section Hole KW-25-003



**KW-25-003**  
301.67 g/t gold over 3.90 meters  
including 1,930 g/t gold over 0.60 meters

